



ST MARY'S Catholic Primary School Newsletter



14th March 2025

St Mary's Catholic Primary School, Amphill Road, Ryde, Isle of Wight. PO33 1LJ 01983 562000 www.stmaryspri.co.uk

Celebration of the word

Inspired by Jesus' encounter with the Samaritan woman at the well, this week's Celebration of the Word invites children to explore the Jubilee theme of forgiveness as a way to receive the peace that the Lord offers us.

The water that I will give him will become in him a spring of water welling up to eternal life
John 4:14

Dear families,

Time is flying by and next week we will be half way through Spring 2! Thank you to those families that are continuing to support with homework, uniform expectations and valuing the importance of attendance. All of these things do make a difference to the children's experience at school and their sense of belonging. This week's lateness was not acceptable, with some classes having over 10 late marks! Please make sure you are on time everyday as this really does impact learning and causes anxiety in children.

This week was British Science week and children explored the awe and wonder of Science and learned all about some famous British Scientists that changed the world for ever! Please discuss this with your children to continue this love of learning at home.

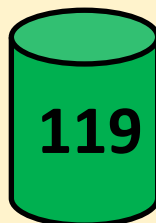
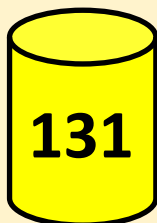
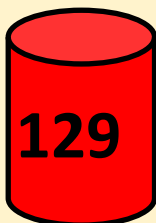
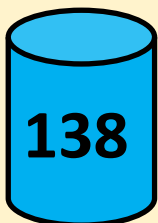
Next week is assessment week, where we will be working with the children to check how much progress they have made since the Autumn term. This information will be shared with you during our Spring parents evenings, which will take place on 1st and 2nd April. More information and the log in to sign up to a slot will be coming out soon.

Have a wonderful weekend

Mrs Broome

House Point Totals

Well done to **St Mary's house** who were the winning house this week!



Our School Lottery

Support our school and
buy your chance to win
here -

[https://
www.yourschoollottery.co.uk/
lottery/school/st-marys-
catholic-primary-school.](https://www.yourschoollottery.co.uk/lottery/school/st-marys-catholic-primary-school)

LIVE LOVE BELIEVE

School news!

Sponsored bounce

FOSMA are planning on holding a sponsored bounce to raise money for the school. More details to follow soon!

Supporting your child to manage anxiety.

INTRODUCTION SESSION FOR PARENTS



Does your child struggle with anxiety?
The MHST is offering parent-led sessions to provide you with skills to help support your child with their anxiety.

What we will be covering:

- Who are the MHST
- Why parent-led?
- What is anxiety?
- Fight, Flight, Freeze
- Types of anxiety



Location: St Mary's Primary School
Date: Thursday 3rd April
Time: 14:00-15:00pm

If you are interested in this workshop, please speak with your school's Designated Mental Health Lead, Mrs Broome

**mental
health
support**
TEAM



Dear Parent/Carer,

Have you heard the news? Rock Kidz is officially coming to your child's school on the 25/03/2025 to deliver the most exciting rock 'n' roll workshops in the UK!

Throughout the school day we'll be transforming the whole school into Rockstars and inspiring them to be the best they can be. Our experienced team will be teaching one of our key messages such as self-esteem, anti-bullying, aspirations and inclusion through our unique Rock Kidz songs.

Merchandise: Wear the message, live the message!

We believe that it is more important than ever for young people to immerse themselves in positive experiences that leave a lasting effect on their wellbeing.

At the end of the workshop day our team will be outside conducting a 'Meet & Greet' for the school community where there will be an opportunity to meet the team and purchase the **official Rock Kidz Merchandise** for your child. The merchandise features a positive message of the value we've covered in the workshop and aims to serve as an inspirational reminder of the Rock Kidz experience. All purchases can be made with **cash or card**. Here is what we will have on sale with prices:

T-Shirts - £12
Caps - £15
Hoodies - £20

Thank you in advance for your support of Rock Kidz. Your purchase helps us to continue our mission to inspire children nationwide.

If you'd like to learn more about our organisation and the work we do visit www.rockkidzuk.com/ontour

We look forward to seeing you soon!

Kindest Regards,

Rock Kidz

There is a new government focus on school attendance and are enforcing new rules for children who are absent or that have holidays during term time. This is in place from September 2024. We will be monitoring attendance and lateness everyday and will contact families where we are concerned.

ATTENDANCE

WHAT THE NEW RULES MEAN FOR ME

1

I'm a single parent of one child and we want to go on holiday for a week.

Your holiday will not be authorised and you must talk to the school before you book anything. Because your child will miss 5 school days you will be given a penalty notice fine. The fine is £160 but if you pay it in 21 days it will be reduced to £80.

£160



2

FOR EVERY CHILD A PENALTY IS GIVEN.



+ £160 + £160 + £160 + £160

4 children & 1 parent = £640

Reduced to £320 if paid in 21 days

IRREGULAR ATTENDANCE

10 IN 10

5

If your child is absent for 10 or more sessions in 10 weeks and their absences are unauthorised. The school will consider prosecution.

1 Day = 2 Sessions

3

FOR A FAMILY OF TWO PARENTS



+ £160 + £160 + £160 + £160



4 children & 2 parents = £1280

Reduced to £640 if paid in 21 days

If in any period of not more than 3 years, your child has a 2nd and 3rd leave of absence or pattern of irregular attendance...

4

2ND TIME

2 parents and
1 child = £320
2 children = 640
3 children = 960
4 children = 1280

No discount for early payment



3RD TIME

A penalty notice fine will not be given. Instead, your case will be taken to court.

A magistrate can fine each parent £2500 for each child

1 parent & 4 children = £10,000
2 parents & 4 children = £20,000

PHYSICAL EDUCATION

SPRING TWO

MONDAY	YEAR SIX & WOODLAND ROOM
TUESDAY	YEAR FOUR & YEAR TWO
WEDNESDAY	EYFS & YEAR THREE
THURSDAY	YEAR FIVE
FRIDAY	EYFS & YEAR ONE

Attendance and Lateness

School target 96%

This weeks whole school attendance **93%**

EYFS = **88%** & **2** lates

Year 1 = **94%** & **3** lates

Year 2 = **90%** & **17** lates!!

Year 3 = **96%** & **4** lates

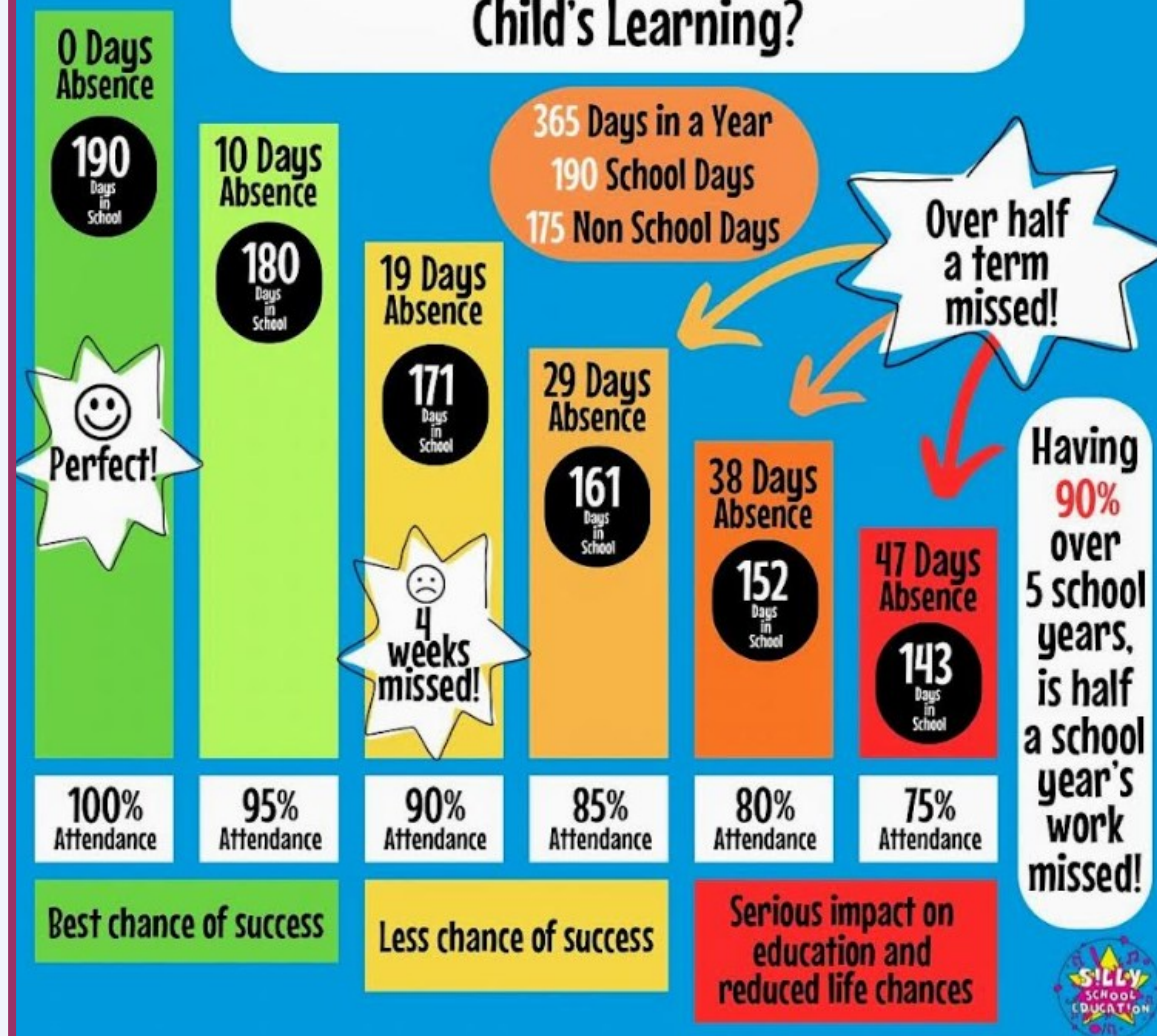
Year 4 = **92%** & **3** lates

Year 5 = **95%** & **4** lates

Year 6 = **95%** & **2** lates

Well done **Year 6!** Great work!

How Does School Attendance Affect a Child's Learning?



Diary Dates 24-25

NEW DATES WILL BE ADDED IN RED

March—Spring bounce event TBC

Tuesday 25th March—Rock kids in school

Tuesday 1st April—Parents Evening

Wednesday 2nd April—Parents evening

Thursday 3rd April—Parent workshop for children with anxiety (2pm)

Thursday 3rd April—Stories in the dust performance for KS2

Thursday 1st May—Sailing Yr 5 visit

Friday 2nd May—Mufti day cakes for Randonnee

Tuesday 6th May—Class photos

WB Monday 12th May—Year 6 SATs week

Monday 19th May—Whole school photo

Monday 26th May—Friday 30th May—Half term—school closed

Monday 2nd June—Sea safe day for Years 5 & 6

11th—13th June—Year 6 residential

Friday 25th July—last day of term

FREE SCHOOL MEALS

Have your circumstances changed? Could you now be entitled to Free School Meals?

To apply online please go to:

www.iow.gov.uk/council/OtherServices/Free-School-Meals/Key-Stage-1-and-2

Medical Appointments & Leave of Absence Requests

If your child has a hospital/dental appointment, please ensure you have notified the school office of the time and date and handed in a copy of the medical letter or appointment card.

Leave of absence request forms for holidays/funerals etc. are available upon request at the school office.

Scopay by 

We are a cashless school and only accept payments through Scopay. Please contact the office if you need to set this up.

Please use this service to pay for:

- School dinners
- After school clubs
- Trips and visits

Free parking!

Free parking permits are available from the school office for the local canoe lake car park.

We urge all parents that need to drive to and from school to use this service as parking around the school site is limited and our local residents still require access to their property at all times.

SPRING CLUBS 2 2025

Day	Club offered	Who can attend	Cost	No of children	Dates
Monday	Spanish	KS 2	£24	15	3pm 4.00pm 24 Feb 3 10 17 24 31 March
	Homework	KS 2	£12	12	3pm 4pm
Tuesday	Basketball Netball	Yr 1 –Yr 6	£33	30	3pm 4.30pm
Wednesday	Dodgeball	Yr 1–Yr 6	£33	30	3pm 4.30pm
	Art Club	KS 2	£30	20	3pm 4pm 24 Feb
Thursday	Football	Yr 1 – Yr 6	£33	30	3pm 4.30pm 24 Feb
Friday	Skateboarding	KS2	£36	30	3pm 4 pm 24 Feb
	Llama Drama	KS 2	£30	20	3pm 4pm 28 Feb 7 14 21 28 March 4 April
	Forest School	Yr1-Yr 6	£27	20	3pm 4.00pm

<https://llama-drama-iow.classforkids.io/info/58>

Sports clubs are £4.50 an hour, no more half hour sessions.

Basketball/Netball - <https://lircoaching.classforkids.io/info/157>

Dodgeball - <https://lircoaching.classforkids.io/info/158>

Football - <https://lircoaching.classforkids.io/info/160>

Forest School - <https://lircoaching.classforkids.io/info/161>

School dinner menu

Chartwells Schools

WEEK 1

W/C: 04/11, 25/11, 16/12, 20/01, 10/02, 10/03, 31/03

	MONDAY	TUESDAY	WEDNESDAY	THURSDAY	FRIDAY
AUTUMN/WINTER 2024	HOT SPECIALS Macaroni Cheese	Classic Beef Burger Served with Potato Wedges	Roast Gammon Served with Roast Potatoes and Gravy	BBQ Chicken Pizza Served with Plain Pasta	Fish Fingers Served with Chips
	Cheesy Bean Burrito	Quorn Burger Served with Potato Wedges	Roast Quorn Served with Roast Potatoes and Gravy	Meatless Feast Cheesy Pizza Served with Plain Pasta	Veggie Fingers Served with Chips
	JACKET POTATO Jacket Potatoes with a choice of hot and cold fillings	Jacket Potatoes with a choice of hot and cold fillings including Salmon Mayonnaise	Jacket Potatoes with a choice of hot and cold fillings	Jacket Potatoes with a choice of hot and cold fillings	Jacket Potatoes with a choice of hot and cold fillings
Tomato Pasta Fresh, homemade tomato sauce with penne pasta					
All main meals are served with two vegetables					
DESSERT	Flapjack with Fruit	Apple Crumble with Custard	Rice Pudding with Jam or Chocolate Spread	Raspberry Jelly	Chocolate Brownie

PACKED LUNCH AVAILABLE Ham, Cheese or Tuna baguette available daily with veg sticks and fresh fruit or dessert of the day

AVAILABLE EVERY DAY Water, salad, freshly baked bread, yoghurt & fresh fruit

Vegetarian Oily Fish Wholegrain
Fruity! Nutritionist's Choice

Chartwells Schools

WEEK 2

W/C: 11/11, 02/12, 06/01, 27/01, 24/02, 17/03

	MONDAY	TUESDAY	WEDNESDAY	THURSDAY	FRIDAY
AUTUMN/WINTER 2024	HOT SPECIALS Veggie Supreme Pizza Served with Plain Pasta	Beef Bolognese Served with Wholewheat Pasta	Roast Pork Served with Roast Potatoes and Gravy	Chicken and Vegetable Pie Served with Mashed Potato and Gravy	Fish Fingers Served with Chips
	Vegetable Fajita Served with Wholegrain Rice	Chinese Vegetable Noodles	Winter Vegetable Hotpot Served with Gravy	Macaroni Cheese	Quorn Dippers Served with Chips
	JACKET POTATO Jacket Potatoes with a choice of hot and cold fillings	Jacket Potatoes with a choice of hot and cold fillings	Jacket Potatoes with a choice of hot and cold fillings	Jacket Potatoes with a choice of hot and cold fillings	Jacket Potatoes with a choice of hot and cold fillings
Tomato Pasta Fresh, homemade tomato sauce with penne pasta					
All main meals are served with two vegetables					
DESSERT	Crunchy Chocolate Mousse	Apple and Cinnamon Sponge with Custard	Fruits of the Forest Jelly	Chocolate Cookie	Orange Glazed Sticky Sponge Pudding

PACKED LUNCH AVAILABLE Ham, Cheese or Tuna baguette available daily with veg sticks and fresh fruit or dessert of the day

AVAILABLE EVERY DAY Water, salad, freshly baked bread, yoghurt & fresh fruit

Vegetarian Oily Fish Wholegrain
Fruity! Nutritionist's Choice

Chartwells Schools

WEEK 3

W/C: 18/11, 09/12, 13/01, 03/02, 03/03, 24/03

	MONDAY	TUESDAY	WEDNESDAY	THURSDAY	FRIDAY
AUTUMN/WINTER 2024	HOT SPECIALS Cheese and Tomato Pizza Served with Potato Wedges	Pork Sausages Served with Mashed Potato and Gravy	Roast Chicken Served with Roast Potatoes and Gravy	Chicken and Vegetable Korma Served with Wholegrain Rice	Fish Fingers Served with Chips
	BBQ Quorn Fillet Served with Wholegrain Rice	Quorn Sausages Served with Mashed Potato and Gravy	Roasted Vegetable and Cranberry Slice Served with Roast Potatoes and Gravy	Tomato and Sweetcorn Pasta	Cheese and Sweetcorn Omelette Served with Chips
	JACKET POTATO Jacket Potatoes with a choice of hot and cold fillings	Jacket Potatoes with a choice of hot and cold fillings	Jacket Potatoes with a choice of hot and cold fillings	Jacket Potatoes with a choice of hot and cold fillings	Jacket Potatoes with a choice of hot and cold fillings
Tomato Pasta Fresh, homemade tomato sauce with penne pasta					
All main meals are served with two vegetables					
DESSERT	Chocolate Brownie with Orange Slices	Bread and Butter Pudding with Custard	Oat Cookie with Fruit	Lemon Shortbread	Vanilla Ice Cream

PACKED LUNCH AVAILABLE Ham, Cheese or Tuna baguette available daily with veg sticks and fresh fruit or dessert of the day

AVAILABLE EVERY DAY Water, salad, freshly baked bread, yoghurt & fresh fruit

Vegetarian Oily Fish Wholegrain
Fruity! Nutritionist's Choice

St Mary's Catholic Primary School Uniform

For all pupils:

Navy polo shirt with logo

Navy round neck sweatshirt

Navy cardigan

(Jumpers and Cardigans may be worn without a logo if wished. However, if you wish to you can purchase them from Kids and Co. with a logo or take the item bought elsewhere to Kids and Co. who for a small fee will add the school logo.)

Warm navy-blue tracksuit bottoms (not shiny or branded ones)

These items may be worn in warm weather but you always need to bring in the tracksuit bottoms so we can access the woods easily

Grey knee length skirt

Grey knee length pinafore

Grey shorts

Blue and white checked dress

White or grey socks / tights

Black shoes – the shoes need to be robust so that when the children are outside at lunch or break time as well as when outside learning their feet are supported. Ballet style shoes or ill-fitting shoes do not provide this support and should not be worn.

The shoes must be plain black with no decoration. They may be trainer styled shoes.

PE Kit

School PE Logo top

Navy shorts/skorts

Plain black trainers (Please provide non-laced ones until your child is able to tie their own laces)

Navy tracksuit bottoms

Navy sweatshirt/hoody

Hair

The children should wear their hair simply. This means no extreme haircuts including sculpting or shaved designs. No colour in hair. Hair bands and clips should be plain and small.

One small pair of earrings may be worn – if the child is not able to take them out they will be covered in tape during PE

Temporary tattoos, make up, other jewellery, nail varnish and festival bands should not be worn at school.

All uniform may be purchased from Kids and Co in Ryde - <https://www.kidsandcodirect.co.uk/>

Finally, please name all items. If you use pen to name the items, you will know that you need to write the name again several times throughout the year as it does wash out.



School Development Days

Monday 28th July 2025

Tuesday 29th July 2025