



ST MARY'S Catholic Primary School Newsletter



24th January 2025

St Mary's Catholic Primary School, Amphill Road, Ryde, Isle of Wight. PO33 1LJ 01983 562000 www.stmaryspri.co.uk

As we mark the beginning of the Jubilee Year, this week's worship explores what this special year can mean for children and their friendship with God. It's a time to restart, a time for resting with God and a time for worshipping Him.

The Spirit of the Lord is upon me, because He has anointed me to proclaim good news to the poor. He has sent me to proclaim liberty to the captives and recovering of sight to the blind, to set at liberty those who are oppressed, to proclaim the year of the Lord's favour. **Luke 1:18-19**

Dear families,

Even though the weather hasn't been great this week, we have still had a fantastic week indoors! Wight for Sight visited some children and delivered some great workshops, where children experienced what it would be like to not be able to see. The children were amazing and reflected on how this would impact their lives.

Don't forget, next week will be hosting our street food market on Thursday straight after school. Please join us and bring along a dish from your culture to share with our community. Please make sure that you also bring along an ingredients list so people with allergies can check before they try.

We are pleased to announce that we will be working closely with the mental health support team (MHST). The team will be delivering workshops to children and will offer families workshops too. This work starts next week with year 4, 5 and 6 taking part in positive sleep workshops.

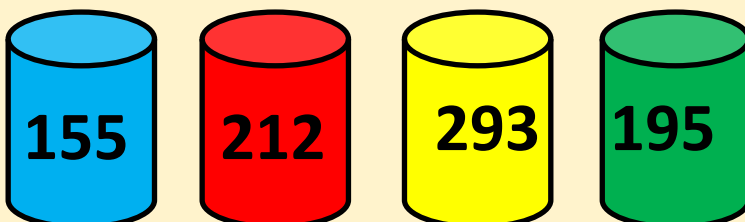
Please continue to work on supporting children with their reading at home, regular practice really does make a difference.

Have a great weekend.

Mrs Broome

House Point Totals

Well done to St David's **house** who were the winning house this week!



Our School Lottery

Support our school and
buy your chance to win
here -

[https://
www.yourschoollottery.co.uk/
lottery/school/st-marys-
catholic-primary-school.](https://www.yourschoollottery.co.uk/lottery/school/st-marys-catholic-primary-school)

LIVE LOVE BELIEVE

School news!

**WEAR WHAT MAKES YOU
HAPPY**

**ALL IOW SCHOOLS MUFTI DAY
7TH FEB 2025**

ARLO IS A 16 YEAR OLD FROM THE ISLE OF WIGHT, DIAGNOSED WITH A GRADE 4 BRAIN TUMOUR. HIS POSITIVITY SERVES AS A BEACON OF HOPE FOR ALL. WHEN ASKED ABOUT HIS CANCER JOURNEY, HE SIMPLY SAID,

"I DON'T WANT PEOPLE TO BE SAD. I JUST WANT TO BE HAPPY IN THE HERE AND NOW, BECAUSE THAT'S ALL THERE IS."

HIS POSITIVITY THROUGHOUT THIS TIME HAS BEEN INSPIRING - SO LETS UNITE AND WEAR WHAT MAKES US HAPPY AND RAISE FUNDS TO HELP HIS TREATMENT.

Arlo's Family's JustGiving page

SUGGESTED DONATION MINIMUM £1

BREAK THE RULES DAY!

For one day only, the following rules can be broken:

- 1) wear school uniform
- 2) school shoes only
- 3) Healthy snacks only (no nuts still apply)
- 4) No crazy hair
- 5) No soft toys
- 6) No make up or temporary tattoos
- 7) No nail varnish

50p for each rule broken!

We are raising money to develop an outside wellbeing hut.

Friday 14th February 2025

There is a new government focus on school attendance and are enforcing new rules for children who are absent or that have holidays during term time. This is in place from September 2024. We will be monitoring attendance and lateness everyday and will contact families where we are concerned.

ATTENDANCE

WHAT THE NEW RULES MEAN FOR ME

1

I'm a single parent of one child and we want to go on holiday for a week.

Your holiday will not be authorised and you must talk to the school before you book anything. Because your child will miss 5 school days you will be given a penalty notice fine. The fine is £160 but if you pay it in 21 days it will be reduced to £80.

£160



2

FOR EVERY CHILD A PENALTY IS GIVEN.



+ £160 + £160 + £160 + £160

4 children & 1 parent = £640

Reduced to £320 if paid in 21 days

IRREGULAR ATTENDANCE

10 IN 10

5

If your child is absent for 10 or more sessions in 10 weeks and their absences are unauthorised. The school will consider prosecution.

1 Day = **2** Sessions

3

FOR A FAMILY OF TWO PARENTS



+ £160 + £160 + £160 + £160



4 children & 2 parents = £1280

Reduced to £640 if paid in 21 days

If in any period of not more than 3 years, your child has a 2nd and 3rd leave of absence or pattern of irregular attendance...

4

2ND TIME

2 parents and
1 child = £320
2 children = 640
3 children = 960
4 children = 1280

No discount for early payment



3RD TIME

A penalty notice fine will not be given. Instead, your case will be taken to court.

A magistrate can fine each parent £2500 for each child

1 parent & 4 children = £10,000
2 parents & 4 children = £20,000

SPRING ONE

MONDAY

YEAR SIX

TUESDAY

EYFS & YEAR THREE

WEDNESDAY

YEAR TWO

THURSDAY

YEAR FOUR & FIVE

FRIDAY

EYFS & YEAR ONE

Attendance and Lateness

School target 96%

This weeks whole school attendance **85%**

EYFS = 87% & 4 lates

Year 1 = 94% & 5 lates

Year 2 = **96%** & 23 lates

Year 3 = 93% & 9 lates

Year 4 = 93% & 5 lates

Year 5 = 92% & 6 lates

Year 6 = 82% & 5 lates

Well done **Year 2!** Great work!

How Does School Attendance Affect a Child's Learning?

0 Days Absence

190 Days in School



100% Attendance

Best chance of success

10 Days Absence

180 Days in School

95% Attendance

19 Days Absence

171 Days in School



90% Attendance

Less chance of success

29 Days Absence

161 Days in School

85% Attendance

38 Days Absence

152 Days in School

80% Attendance

Serious impact on education and reduced life chances

365 Days in a Year
190 School Days
175 Non School Days

Over half a term missed!

Having **90%** over 5 school years, is half a school year's work missed!



Diary Dates 24-25

NEW DATES WILL BE ADDED IN RED

Thursday 30th January—Street food market 3pm

Sunday 2nd February—School mass @ church 11am

Friday 7th February—Mufti day

Tuesday 11th February—school mass 9.15am

Tuesday 4th February —Yr 4 Wild heart Sanctuary visit

Wednesday 5th February—Yr 5 Osborne House

Thursday 13th February— Yr 1 Bread making and Valentines Disco

Friday 14th February—Break the rules day

Monday 17th February—Friday 21st February—
Half term—school closed.

Thursday 6th March—Yr 5 Ryde Academy World book day

Wednesday 12th March— **Yr 3 British Museum**

Tuesday 25th March—Rock kids in school

Monday 1st April—Parents Evening

Tuesday 2nd April—Parents evening

Friday 2nd May—Mufti day cakes for Randonnee

Monday 26th May—Friday 30th May—Half term—
school closed

FREE SCHOOL MEALS

Have your circumstances changed? Could you now be entitled to Free School Meals?

To apply online please go to:

www.iow.gov.uk/council/OtherServices/Free-School-Meals/Key-Stage-1-and-2

Medical Appointments & Leave of Absence Requests

If your child has a hospital/dental appointment, please ensure you have notified the school office of the time and date and handed in a copy of the medical letter or appointment card.

Leave of absence request forms for holidays/funerals etc. are available upon request at the school office.

Scopay by  TUCASI
Online Payments

We are a cashless school and only accept payments through Scopay. Please contact the office if you need to set this up.

Please use this service to pay for:

School dinners
After school clubs
Trips and visits

Free parking!

Free parking permits are available from the school office for the local canoe lake car park.

We urge all parents that need to drive to and from school to use this service as parking around the school site is limited and our local residents still require access to their property at all times.

SPRING CLUBS 2025

Day	Club offered	Who can attend	Cost	No of children	Dates
Monday	Spanish	KS 2	£24	15	3pm 4.00pm
	Homework	KS 2	£12	12	3pm 4pm
Tuesday	Fun sports	Yr 1 –Yr 6	£33	30	3pm 4.30pm 06/01/2025
Wednesday	Multiskills	Recp –Yr 6	£33	30	3pm 4.30pm 06/01/2025
	Art Club	KS 2	£25	20	3pm 4pm 15/01/2025
Thursday	Football	Yr 1 – Yr 6	£33	30	3pm 4.30pm 06/01/2025
Friday	Skateboarding	KS2	£36	30	3pm 4 pm
	Llama Drama	KS 2	£30	20	3pm 4pm Jan 10 17 24 31 Feb 7 14

<https://llama-drama-iow.classforkids.io/info/58>

Sports clubs are £4.50 an hour or £5.50 for an hour and half.

. These are for the 1 hour sessions.

Tuesday 3pm - 4pm - Fun Club

<https://ljrcoaching.classforkids.io/info/145>

Wednesday 3pm - 4pm - Multi Skills

<https://ljrcoaching.classforkids.io/info/146>

Thursday 3pm - 4pm - Football

<https://ljrcoaching.classforkids.io/info/148>

These are for the 1.5 hour session.

Tuesday 3pm - 4.30pm - Fun Club

<https://ljrcoaching.classforkids.io/info/149>

Wednesday 3pm - 4.30pm - Multi Skills

<https://ljrcoaching.classforkids.io/info/150>

Thursday 3pm - 4.30pm - Football

<https://ljrcoaching.classforkids.io/info/151>

School dinner menu

Chartwells Schools

WEEK 1

W/C: 04/11, 25/11, 16/12, 20/01, 10/02, 10/03, 31/03

	MONDAY	TUESDAY	WEDNESDAY	THURSDAY	FRIDAY
AUTUMN/WINTER 2024	HOT SPECIALS Macaroni Cheese	Classic Beef Burger Served with Potato Wedges	Roast Gammon Served with Roast Potatoes and Gravy	BBQ Chicken Pizza Served with Plain Pasta	Fish Fingers Served with Chips
	Cheesy Bean Burrito	Quorn Burger Served with Potato Wedges	Roast Quorn Served with Roast Potatoes and Gravy	Meatless Feast Cheesy Pizza Served with Plain Pasta	Veggie Fingers Served with Chips
	JACKET POTATO Jacket Potatoes with a choice of hot and cold fillings	Jacket Potatoes with a choice of hot and cold fillings including Salmon Mayonnaise	Jacket Potatoes with a choice of hot and cold fillings	Jacket Potatoes with a choice of hot and cold fillings	Jacket Potatoes with a choice of hot and cold fillings
Tomato Pasta Fresh, homemade tomato sauce with penne pasta					
All main meals are served with two vegetables					
DESSERT	Flapjack with Fruit	Apple Crumble with Custard	Rice Pudding with Jam or Chocolate Spread	Raspberry Jelly	Chocolate Brownie

PACKED LUNCH AVAILABLE
Ham, Cheese or Tuna baguette available daily with veg sticks and fresh fruit or dessert of the day

AVAILABLE EVERY DAY
Water, salad, freshly baked bread, yoghurt & fresh fruit

Vegetarian
Oily Fish
Wholegrain
Fruity!
Nutritionist's Choice

Chartwells Schools

WEEK 2

W/C: 11/11, 02/12, 06/01, 27/01, 24/02, 17/03

	MONDAY	TUESDAY	WEDNESDAY	THURSDAY	FRIDAY
AUTUMN/WINTER 2024	HOT SPECIALS Veggie Supreme Pizza Served with Plain Pasta	Beef Bolognese Served with Wholewheat Pasta	Roast Pork Served with Roast Potatoes and Gravy	Chicken and Vegetable Pie Served with Mashed Potato and Gravy	Fish Fingers Served with Chips
	Vegetable Fajita Served with Wholegrain Rice	Chinese Vegetable Noodles	Winter Vegetable Hotpot Served with Gravy	Macaroni Cheese	Quorn Dippers Served with Chips
	JACKET POTATO Jacket Potatoes with a choice of hot and cold fillings	Jacket Potatoes with a choice of hot and cold fillings	Jacket Potatoes with a choice of hot and cold fillings	Jacket Potatoes with a choice of hot and cold fillings	Jacket Potatoes with a choice of hot and cold fillings
Tomato Pasta Fresh, homemade tomato sauce with penne pasta					
All main meals are served with two vegetables					
DESSERT	Crunchy Chocolate Mousse	Apple and Cinnamon Sponge with Custard	Fruits of the Forest Jelly	Chocolate Cookie	Orange Glazed Sticky Sponge Pudding

PACKED LUNCH AVAILABLE
Ham, Cheese or Tuna baguette available daily with veg sticks and fresh fruit or dessert of the day

AVAILABLE EVERY DAY
Water, salad, freshly baked bread, yoghurt & fresh fruit

Vegetarian
Oily Fish
Wholegrain
Fruity!
Nutritionist's Choice

Chartwells Schools

WEEK 3

W/C: 18/11, 09/12, 13/01, 03/02, 03/03, 24/03

	MONDAY	TUESDAY	WEDNESDAY	THURSDAY	FRIDAY
AUTUMN/WINTER 2024	HOT SPECIALS Cheese and Tomato Pizza Served with Potato Wedges	Pork Sausages Served with Mashed Potato and Gravy	Roast Chicken Served with Roast Potatoes and Gravy	Chicken and Vegetable Korma Served with Wholegrain Rice	Fish Fingers Served with Chips
	BBQ Quorn Fillet Served with Wholegrain Rice	Quorn Sausages Served with Mashed Potato and Gravy	Roasted Vegetable and Cranberry Slice Served with Roast Potatoes and Gravy	Tomato and Sweetcorn Pasta	Cheese and Sweetcorn Omelette Served with Chips
	JACKET POTATO Jacket Potatoes with a choice of hot and cold fillings	Jacket Potatoes with a choice of hot and cold fillings	Jacket Potatoes with a choice of hot and cold fillings	Jacket Potatoes with a choice of hot and cold fillings	Jacket Potatoes with a choice of hot and cold fillings
Tomato Pasta Fresh, homemade tomato sauce with penne pasta					
All main meals are served with two vegetables					
DESSERT	Chocolate Brownie with Orange Slices	Bread and Butter Pudding with Custard	Oat Cookie with Fruit	Lemon Shortbread	Vanilla Ice Cream

PACKED LUNCH AVAILABLE
Ham, Cheese or Tuna baguette available daily with veg sticks and fresh fruit or dessert of the day

AVAILABLE EVERY DAY
Water, salad, freshly baked bread, yoghurt & fresh fruit

Vegetarian
Oily Fish
Wholegrain
Fruity!
Nutritionist's Choice

★ CURTAIN CALL CREATIVE ★
PRESENTS



Seussical

Music by
STEPHEN
FLAHERTY

Lyrics by
LYNN
AHRENS

Book by
LYNN AHRENS and
STEPHEN FLAHERTY

Co-Conceived by LYNN AHRENS, STEPHEN FLAHERTY, and ERIC IDLE

Based on the Works of DR. SEUSS

MEDINA THEATRE

FEBRUARY 1ST AT 7PM
2ND AT 4PM & 7PM

TICKETS | ADULTS £17 | CHILDREN £15

THIS AMATEUR PRODUCTION IS PRESENTED BY ARRANGEMENT WITH MUSICAL THEATRE INTERNATIONAL.
ALL AUTHORISED PERFORMANCE MATERIALS ARE ALSO SUPPLIED BY MTI WWW.MTISHOWS.CO.UK

BOX OFFICE: 01983 823884 | MEDINATHEATRE.CO.UK

St Mary's Catholic Primary School Uniform

For all pupils:

Navy polo shirt with logo

Navy round neck sweatshirt

Navy cardigan
(Jumpers and Cardigans may be worn without a logo if wished. However, if you wish to you can purchase them from Kids and Co. with a logo or take the item bought elsewhere to Kids and Co. who for a small fee will add the school logo.)

Warm navy-blue tracksuit bottoms (not shiny or branded ones)

These items may be worn in warm weather but you always need to bring in the tracksuit bottoms so we can access the woods easily

Grey knee length skirt
Grey knee length pinafore
Grey shorts
Blue and white checked dress

White or grey socks / tights

Black shoes – the shoes need to be robust so that when the children are outside at lunch or break time as well as when outside learning their feet are supported. Ballet style shoes or ill-fitting shoes do not provide this support and should not be worn.

The shoes must be plain black with no decoration. They may be trainer styled shoes.

PE Kit

School PE Logo top

Navy shorts/skorts

Plain black trainers (Please provide non-laced ones until your child is able to tie their own laces)

Navy tracksuit bottoms

Navy sweatshirt/hoody

Hair

The children should wear their hair simply. This means no extreme haircuts including sculpting or shaved designs. No colour in hair. Hair bands and clips should be plain and small.

One small pair of earrings may be worn – if the child is not able to take them out they will be covered in tape during PE

Temporary tattoos, make up, other jewellery, nail varnish and festival bands should not be worn at school.

All uniform may be purchased from Kids and Co in Ryde - <https://www.kidsandcodirect.co.uk/>

Finally, please name all items. If you use pen to name the items, you will know that you need to write the name again several times throughout the year as it does wash out.



School Development Days

Monday 28th July 2025

Tuesday 29th July 2025

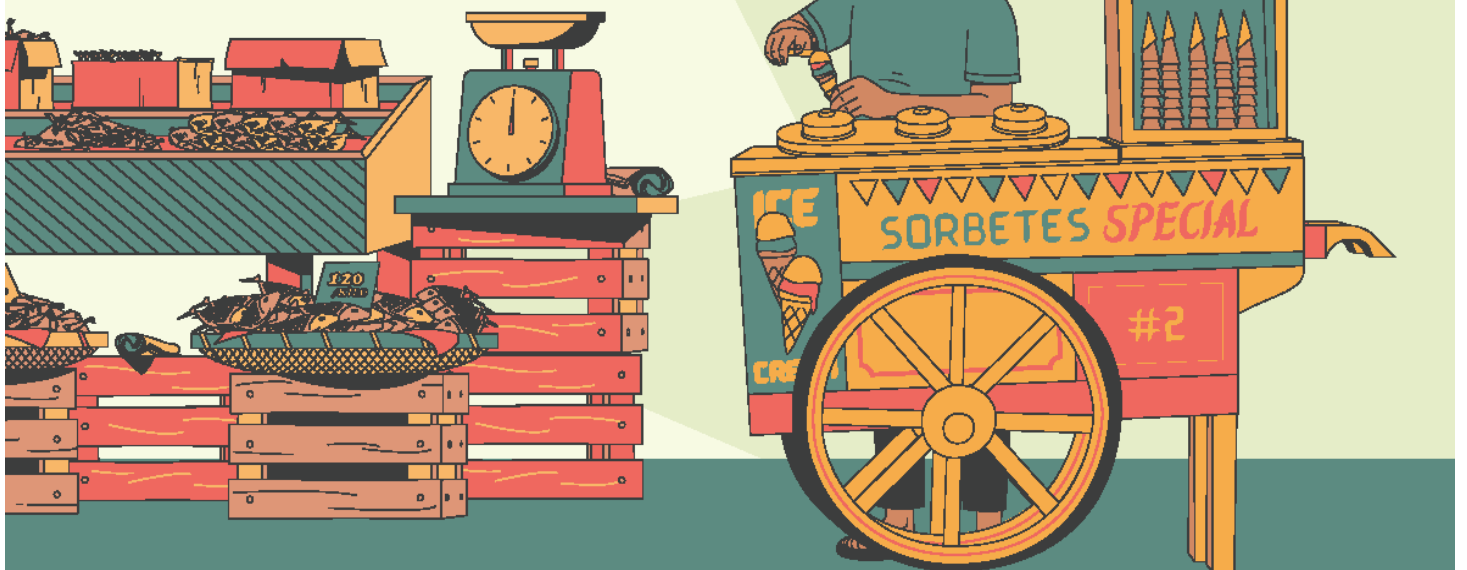
St Mary's Presents

Street Food Market

To celebrate how many different cultures we have at School!

Bring along a plate of food from your culture to share with everyone.

Thursday 30th January- 3pm in the school hall.



Don't forget to label the ingredients used for allergy purposes.

Community News

JANUARY 2025 NEWSLETTER



DON'T MISS THIS FUN FAMILY FESTIVAL DURING FEBRUARY HALF TERM!
Thursday 20th to Saturday 22nd February



Come and see me at Quay Arts in February!

Tickets are now on sale for the IW Story Festival at **Quay Arts** during February half term from www.iwstoryfestival.com. It's a chance to meet performers and writers like **Maz Evans** (pictured on the left) creator of **Who Let the Gods Out**, who will be with us on Friday 21st Feb.

After wowing audiences at our **Stories in Schools** in June, poet **Paul Lyalls** returns for the main festival



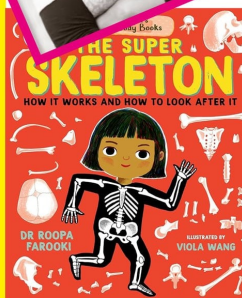
There is so much to do at the IW Story Festival!



Find out how top **authors** like **M G Leonard**, **Naomi Ishiguro**, **Roopa Farooki** (left), and **Gareth Peter** **create** their books

Be **inspired** by **performances** including **Woodland Tales with Granddad** (pictured on right); **Brutal**, **Pinocchio** and **Asian Dance**

Imagine new characters in the **Secret Library** or with **the roll of dice**, and picture the stories created by storytellers **Steph Brittain**, **Holly Medland** and **Sue Bailey**



Puppet tales from Pickled Image

SOME QUESTION YOU MAY WANT TO ASK...

Q: Do I need to get my tickets in advance?

A: It's a good idea –they're selling fast! Go to: www.iwstoryfestival.com to buy yours now.

Q: How much are tickets?

A: Some are **TOTALLY FREE**, others cost £4 to £6

Q: Is it just for people who like reading?

NO! The IW Story Festival isn't just about books! There are lots of **hands-on activities** for you to try, including the art of **paper folding**, **drawing dastardly cartoons**, **creating a book scene** and many others.



Pick up a programme from Quay Arts or any library

More information from: www.iwstoryfestival.com

Community News



The St Boniface Federation

Executive Headteacher: Mrs Maggie Sanderson

Dear Parent / Guardian

27th January 2025

We have a vacancy for a parent governor, which we need to fill. The schools within St Boniface Federation have always aimed for a partnership with parents, which undoubtedly brings great benefits to the children. One of the most significant ways you can help in promoting this aim is to volunteer to be a parent governor.

We are currently looking for a volunteer who has:

- a desire to contribute to the development of the school and its community
- an interest in the performance of the school
- an open and enquiring mind
- the ability to look at issues objectively
- a willingness to listen, ask questions and make informed judgements
- the ability to work well with others
- time to help make a difference

Whatever your level of knowledge, skills and experience - enthusiasm, interest and a desire to learn are the important factors.

Being a governor can give you:

- a chance to use and develop your own skills and experience
- the opportunity to work within a team
- experience in working in a strategic environment
- a sense of achievement

Training and support is available to help you through the time you serve as a school governor.

Governors will be required to be involved with and visit all three schools within the St Boniface Federation.

The governing board provides strategic direction and supports school improvement. Governors work as a team to oversee and hold the school to account for educational performance and financial probity.

We have half termly Full Governing Body meetings on a Monday evening from 6pm to 8pm and there are also various committees including Finance & Staffing, Curriculum, Pay and Admissions who generally meet during the day.

If you would like more information or an application form please contact the school office in any of the three schools within the St Boniface Federation.

Please return your application form to the school by 12 noon on Monday 10th February 2024.



St Saviour's Catholic Primary School, Summers Lane, Totland, PO39 0HQ. Tel: 01983 752175 admin@staviourscpri.co.uk
St Mary's Catholic Primary School, Ampthill Road, Ryde, PO33 1LJ. Tel: 01983 562000 admin@stmarysPri.co.uk
St Thomas of Canterbury Catholic Primary School, High Street, Carisbrooke, PO30 1NR. Tel: 01983 522747 admin@stthomasPri.co.uk