



# ST MARY'S Catholic Primary School Newsletter



10th January 2025

St Mary's Catholic Primary School, Amphill Road, Ryde, Isle of Wight. PO33 1LJ 01983 562000 [www.stmaryspri.co.uk](http://www.stmaryspri.co.uk)

RE:

This week during worship, the children reflect on the significance of Jesus' Baptism and what it means for us all in entering the Kingdom of God. Children will explore the symbols of Baptism and be offered a time to invite the Holy

Spirit into their hearts.

He will baptise you with the Holy Spirit and fire. **Luke 3:16**

Dear parents,

It has been a great start to the Spring term!

Thank you to all of those families that have made sure children are in school and on time, this really does make a huge difference to children feeling confident within their learning as every minute really does count.

Year two has already been out for a visit to St Celia's Abbey, where the sisters gave a wonderful presentation about the Christmas story. The children learned about the symbolism of the gifts presented by the three kings to Jesus.

At the end of last term we had a wonderful wellbeing day to end the year. Due to your amazing donations, we raised £125, which the wellbeing team want to use to develop a covered area on the playground to continue wellbeing activities at break and lunch time. We will be holding more wellbeing activities to continue to raise more money.

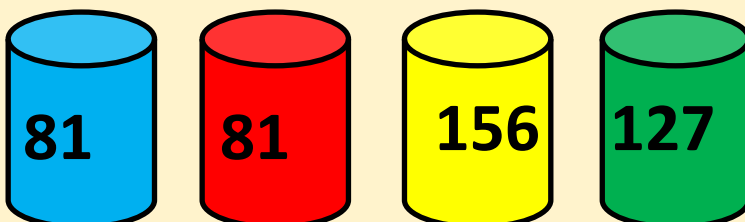
Don't forget to continue to log your children's reading on the boom reader. We use this to analyse how well children are progressing in their reading and research has shown that if children read regularly at home and at school then they make much quicker progress and develop a love of reading that lasts a lifetime. Please support your child with this vital skill.

I hope you have a wonderful weekend, don't forget to do some reading!

Mrs Broome

## House Point Totals

Well done to St David's **house** who were the winning house this week!



## Our School Lottery

Support our school and  
buy your chance to win  
here -

[https://  
www.yourschoollottery.co.uk/  
lottery/school/st-marys-  
catholic-primary-school.](https://www.yourschoollottery.co.uk/lottery/school/st-marys-catholic-primary-school)

**LIVE LOVE BELIEVE**

# School news!

## Dear parents

All children will bring home a data sheet, can you please check and amend and return to school. So we can have up to date contact details.

## Spanish Club

This is now open to Year 2 children if they wish to join .

**BREAK THE RULES DAY!**

For one day only, the following rules can be broken:

- 1) wear school uniform
- 2) school shoes only
- 3) Healthy snacks only (no nuts still apply)
- 4) No crazy hair
- 5) No soft toys
- 6) No make up or temporary tattoos
- 7) No nail varnish

50p for each rule broken!

We are raising money to develop an outside wellbeing hut.

Friday 14th February 2025

There is a new government focus on school attendance and are enforcing new rules for children who are absent or that have holidays during term time. This is in place from September 2024. We will be monitoring attendance and lateness everyday and will contact families where we are concerned.

# ATTENDANCE

## WHAT THE NEW RULES MEAN FOR ME

**1**

**I'm a single parent of one child and we want to go on holiday for a week.**

Your holiday will not be authorised and you must talk to the school before you book anything. Because your child will miss 5 school days you will be given a penalty notice fine. The fine is £160 but if you pay it in 21 days it will be reduced to £80.

**£160**



**2**

**FOR EVERY CHILD A PENALTY IS GIVEN.**



+ £160 + £160 + £160 + £160

**4 children & 1 parent = £640**

Reduced to £320 if paid in 21 days

**IRREGULAR ATTENDANCE**

**10 IN 10**

**5**

If your child is absent for 10 or more sessions in 10 weeks and their absences are unauthorised. The school will consider prosecution.

**1 Day = 2 Sessions**

**3**

**FOR A FAMILY OF TWO PARENTS**



+ £160 + £160 + £160 + £160



**4 children & 2 parents = £1280**

Reduced to £640 if paid in 21 days

**If in any period of not more than 3 years, your child has a 2nd and 3rd leave of absence or pattern of irregular attendance...**

**4**

**2ND TIME**

2 parents and 1 child = £320  
2 children = 640  
3 children = 960  
4 children = 1280

**No discount for early payment**



**3RD TIME**

A penalty notice fine will not be given. Instead, your case will be taken to court.

A magistrate can fine each parent £2500 for each child

**1 parent & 4 children = £10,000**  
**2 parents & 4 children = £20,000**

## SPRING ONE

MONDAY

YEAR SIX

TUESDAY

EYFS & YEAR THREE

WEDNESDAY

YEAR TWO

THURSDAY

YEAR FOUR & FIVE

FRIDAY

EYFS & YEAR ONE

# Attendance and Lateness

School target 96%

This weeks whole school attendance **92%**

EYFS = 87% & 3 lates

Year 1 = 94% & 1 late

Year 2 = 87% & 12 lates

Year 3 = **95%** & 6 lates

Year 4 = 92% & 3 lates

Year 5 = 94% & 11 lates

Year 6 = 98% & 5 lates

Well done **Year 3!** Great work!

## How Does School Attendance Affect a Child's Learning?

0 Days Absence

190 Days in School



100% Attendance

Best chance of success

10 Days Absence

180 Days in School

95% Attendance

19 Days Absence

171 Days in School

90% Attendance



Less chance of success

29 Days Absence

161 Days in School

85% Attendance

38 Days Absence

152 Days in School

80% Attendance

Serious impact on education and reduced life chances

365 Days in a Year  
190 School Days  
175 Non School Days

Over half a term missed!

Having **90%** over 5 school years, is half a school year's work missed!



# Diary Dates 24-25

## NEW DATES WILL BE ADDED IN RED

Monday 20th & 21st January—Yr 2 parents eve

Thursday 30th January—Street food market 3pm

Sunday 2nd February—School mass @ church 11am

Tuesday 11th February—school mass 9.15am

Tuesday 4th February —Yr 5 Osborne House

Thursday 13th February—Valentines Disco

Friday 14th February—Break the rules day

Monday 17th February—Friday 21st February—  
Half term—school closed.

Thursday 6th March—Yr 5 Ryde Academy

Monday 26th May—Friday 30th May—Half  
term—school closed

Friday 25th July—last day of term

## FREE SCHOOL MEALS

Have your circumstances changed? Could you now be entitled to Free School Meals?

To apply online please go to:

[www.iow.gov.uk/council/OtherServices/Free-School-Meals/Key-Stage-1-and-2](http://www.iow.gov.uk/council/OtherServices/Free-School-Meals/Key-Stage-1-and-2)

## Medical Appointments & Leave of Absence Requests

If your child has a hospital/dental appointment, please ensure you have notified the school office of the time and date and handed in a copy of the medical letter or appointment card.

Leave of absence request forms for holidays/ funerals etc. are available upon request at the school office.

**Scopay** by  TUCASI  
Online Payments

We are a cashless school and only accept payments through Scopay. Please contact the office if you need to set this up.

Please use this service to pay for:

- School dinners
- After school clubs
- Trips and visits

## Free parking!

Free parking permits are available from the school office for the local canoe lake car park.

We urge all parents that need to drive to and from school to use this service as parking around the school site is limited and our local residents still require access to their property at all times.

# SPRING CLUBS 2025

Day	Club offered	Who can attend	Cost	No of children	Dates
Monday	Spanish	KS 2	£24	15	3pm 4.00pm
	Homework	KS 2	£12	12	3pm 4pm
Tuesday	Fun sports	Yr 1 –Yr 6	£33	30	3pm 4.30pm 06/01/2025
Wednesday	Multiskills	Recp –Yr 6	£33	30	3pm 4.30pm 06/01/2025
	Art Club	KS 2	£25	20	3pm 4pm 15/01/2025
Thursday	Football	Yr 1 – Yr 6	£33	30	3pm 4.30pm 06/01/2025
Friday	Skateboarding	KS2	£36	30	3pm 4 pm
	Llama Drama	KS 2	£30	20	3pm 4pm Jan10 17 24 31 Feb 7 14

<https://llama-drama-iow.classforkids.io/info/58>

Sports clubs are £4.50 an hour or £5.50 for an hour and half.

These are for the 1.5 hour session.

Tuesday 3pm - 4.30pm - Fun Club

<https://ljrcoaching.classforkids.io/info/149>

Wednesday 3pm - 4.30pm - Multi Skills

<https://ljrcoaching.classforkids.io/info/150>

Thursday 3pm - 4.30pm - Football

<https://ljrcoaching.classforkids.io/info/151>

. These are for the 1 hour sessions.

Tuesday 3pm - 4pm - Fun Club

<https://ljrcoaching.classforkids.io/info/145>

Wednesday 3pm - 4pm - Multi Skills

<https://ljrcoaching.classforkids.io/info/146>

Thursday 3pm - 4pm - Football

<https://ljrcoaching.classforkids.io/info/148>

# School dinner menu

**Chartwells Schools**

## WEEK 1

W/C: 04/11, 25/11, 16/12, 20/01, 10/02, 10/03, 31/03

	MONDAY	TUESDAY	WEDNESDAY	THURSDAY	FRIDAY
<b>HOT SPECIALS</b>	Macaroni Cheese	Classic Beef Burger Served with Potato Wedges	Roast Gammon Served with Roast Potatoes and Gravy	BBQ Chicken Pizza Served with Plain Pasta	Fish Fingers Served with Chips
	Cheesy Bean Burrito	Quorn Burger Served with Potato Wedges	Roast Quorn Served with Roast Potatoes and Gravy	Meatless Feast Cheesy Pizza Served with Plain Pasta	Veggie Fingers Served with Chips
<b>JACKET POTATO</b>	Jacket Potatoes with a choice of hot and cold fillings	Jacket Potatoes with a choice of hot and cold fillings including Salmon Mayonnaise	Jacket Potatoes with a choice of hot and cold fillings	Jacket Potatoes with a choice of hot and cold fillings	Jacket Potatoes with a choice of hot and cold fillings
<b>Tomato Pasta</b> Fresh, homemade tomato sauce with penne pasta					
All main meals are served with two vegetables					
<b>DESSERT</b>	Flapjack with Fruit	Apple Crumble with Custard	Rice Pudding with Jam or Chocolate Spread	Raspberry Jelly	Chocolate Brownie

**PACKED LUNCH AVAILABLE**  
Ham, Cheese or Tuna baguette available daily with veg sticks and fresh fruit or dessert of the day

**AVAILABLE EVERY DAY**  
Water, salad, freshly baked bread, yoghurt & fresh fruit

Vegetarian Oily Fish Wholegrain  
Fruity! Nutritionist's Choice

**Chartwells Schools**

## WEEK 2

W/C: 11/11, 02/12, 06/01, 27/01, 24/02, 17/03

	MONDAY	TUESDAY	WEDNESDAY	THURSDAY	FRIDAY
<b>HOT SPECIALS</b>	Veggie Supreme Pizza Served with Plain Pasta	Beef Bolognese Served with Wholewheat Pasta	Roast Pork Served with Roast Potatoes and Gravy	Chicken and Vegetable Pie Served with Mashed Potato and Gravy	Fish Fingers Served with Chips
	Vegetable Fajita Served with Wholegrain Rice	Chinese Vegetable Noodles	Winter Vegetable Hotpot Served with Gravy	Macaroni Cheese	Quorn Dippers Served with Chips
<b>JACKET POTATO</b>	Jacket Potatoes with a choice of hot and cold fillings	Jacket Potatoes with a choice of hot and cold fillings	Jacket Potatoes with a choice of hot and cold fillings	Jacket Potatoes with a choice of hot and cold fillings	Jacket Potatoes with a choice of hot and cold fillings
<b>Tomato Pasta</b> Fresh, homemade tomato sauce with penne pasta					
All main meals are served with two vegetables					
<b>DESSERT</b>	Crunchy Chocolate Mousse	Apple and Cinnamon Sponge with Custard	Fruits of the Forest Jelly	Chocolate Cookie	Orange Glazed Sticky Sponge Pudding

**PACKED LUNCH AVAILABLE**  
Ham, Cheese or Tuna baguette available daily with veg sticks and fresh fruit or dessert of the day

**AVAILABLE EVERY DAY**  
Water, salad, freshly baked bread, yoghurt & fresh fruit

Vegetarian Oily Fish Wholegrain  
Fruity! Nutritionist's Choice

**Chartwells Schools**

## WEEK 3

W/C: 18/11, 09/12, 13/01, 03/02, 03/03, 24/03

	MONDAY	TUESDAY	WEDNESDAY	THURSDAY	FRIDAY
<b>HOT SPECIALS</b>	Cheese and Tomato Pizza Served with Potato Wedges	Pork Sausages Served with Mashed Potato and Gravy	Roast Chicken Served with Roast Potatoes and Gravy	Chicken and Vegetable Korma Served with Wholegrain Rice	Fish Fingers Served with Chips
	BBQ Quorn Fillet Served with Wholegrain Rice	Quorn Sausages Served with Mashed Potato and Gravy	Roasted Vegetable and Cranberry Slice Served with Roast Potatoes and Gravy	Tomato and Sweetcorn Pasta	Cheese and Sweetcorn Omelette Served with Chips
<b>JACKET POTATO</b>	Jacket Potatoes with a choice of hot and cold fillings	Jacket Potatoes with a choice of hot and cold fillings	Jacket Potatoes with a choice of hot and cold fillings	Jacket Potatoes with a choice of hot and cold fillings	Jacket Potatoes with a choice of hot and cold fillings
<b>Tomato Pasta</b> Fresh, homemade tomato sauce with penne pasta					
All main meals are served with two vegetables					
<b>DESSERT</b>	Chocolate Brownie with Orange Slices	Bread and Butter Pudding with Custard	Oat Cookie with Fruit	Lemon Shortbread	Vanilla Ice Cream

**PACKED LUNCH AVAILABLE**  
Ham, Cheese or Tuna baguette available daily with veg sticks and fresh fruit or dessert of the day

**AVAILABLE EVERY DAY**  
Water, salad, freshly baked bread, yoghurt & fresh fruit

Vegetarian Oily Fish Wholegrain  
Fruity! Nutritionist's Choice

★ CURTAIN CALL CREATIVE ★  
PRESENTS



# Seussical

Music by  
**STEPHEN  
FLAHERTY**

Lyrics by  
**LYNN  
AHRENS**

Book by  
**LYNN AHRENS and  
STEPHEN FLAHERTY**

Co-Conceived by LYNN AHRENS, STEPHEN FLAHERTY, and ERIC IDLE

Based on the Works of DR. SEUSS

## MEDINA THEATRE

**FEBRUARY** 1ST AT 7PM  
2ND AT 4PM & 7PM

**TICKETS | ADULTS £17 | CHILDREN £15**

THIS AMATEUR PRODUCTION IS PRESENTED BY ARRANGEMENT WITH MUSICAL THEATRE INTERNATIONAL.  
ALL AUTHORISED PERFORMANCE MATERIALS ARE ALSO SUPPLIED BY MTI WWW.MTISHOWS.CO.UK

**BOX OFFICE: 01983 823884 | MEDINATHEATRE.CO.UK**

## St Mary's Catholic Primary School Uniform

### For all pupils:

Navy polo shirt with logo

Navy round neck sweatshirt

Navy cardigan

(Jumpers and Cardigans may be worn without a logo if wished. However, if you wish to you can purchase them from Kids and Co. with a logo or take the item bought elsewhere to Kids and Co. who for a small fee will add the school logo.)

Warm navy-blue tracksuit bottoms (not shiny or branded ones)

These items may be worn in warm weather but you always need to bring in the tracksuit bottoms so we can access the woods easily

Grey knee length skirt

Grey knee length pinafore

Grey shorts

Blue and white checked dress

White or grey socks / tights

Black shoes – the shoes need to be robust so that when the children are outside at lunch or break time as well as when outside learning their feet are supported. Ballet style shoes or ill-fitting shoes do not provide this support and should not be worn.

The shoes must be plain black with no decoration. They may be trainer styled shoes.

### PE Kit

School PE Logo top

Navy shorts/skorts

Plain black trainers (Please provide non-laced ones until your child is able to tie their own laces)

Navy tracksuit bottoms

Navy sweatshirt/hoody

### Hair

The children should wear their hair simply. This means no extreme haircuts including sculpting or shaved designs. No colour in hair. Hair bands and clips should be plain and small.

One small pair of earrings may be worn – if the child is not able to take them out they will be covered in tape during PE

**Temporary tattoos, make up, other jewellery, nail varnish and festival bands should not be worn at school.**

All uniform may be purchased from Kids and Co in Ryde - <https://www.kidsandcodirect.co.uk/>

Finally, please name all items. If you use pen to name the items, you will know that you need to write the name again several times throughout the year as it does wash out.



# School Development Days

Monday 28th July 2025

Tuesday 29th July 2025

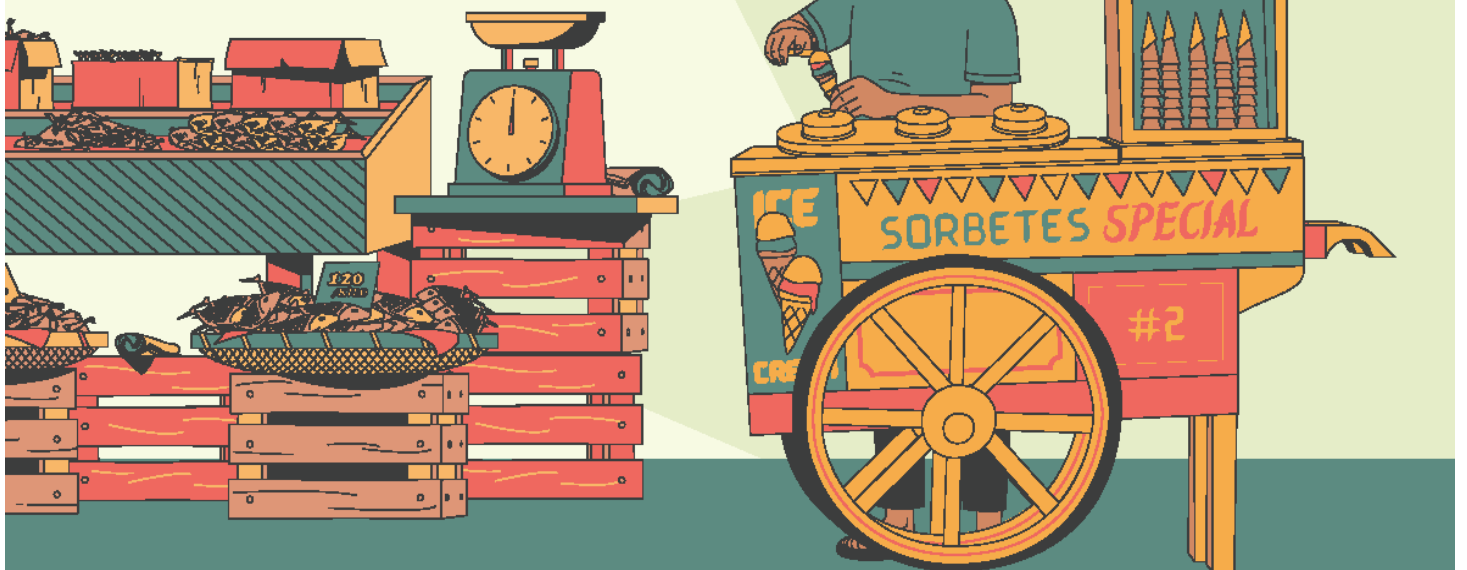
St Mary's Presents

# Street Food Market

To celebrate how many different cultures we have at School!

Bring along a plate of food from your culture to share with everyone.

Thursday 30th January- 3pm in the school hall.



Don't forget to label the ingredients used for allergy purposes.

# Community News

**DOES YOUR CHILD ENJOY BEING ACTIVE AND HAVING FUN?**

**IS YOUR CHILD TOO YOUNG TO JOIN A TEAM?**

**DOES YOUR CHILD WANT TO BUILD THEIR CONFIDENCE IN A SPORTING ENVIRONMENT?**

**DOES YOUR CHILD WANT TO PLAY FOOTBALL BUT NOT IN A TEAM YET?**

IF YOU'VE ANSWERED YES TO ANY OF THOSE QUESTIONS, WE'VE GOT THE PERFECT SOLUTION! WE PROVIDE A SAFE, ENJOYABLE AND NON-COMPETITIVE ENVIRONMENT WHERE CHILDREN CAN HAVE FUN WHILST DEVELOPING AND IMPROVING THEIR FOOTBALL SKILLS.

## **OURS AIMS ARE:**

- TO ALLOW CHILDREN TO HAVE FUN THROUGH FOOTBALL
- TO IMPROVE CONFIDENCE AND SOCIAL SKILLS.
- TO LEARN AND IMPROVE BASIC FOOTBALL SKILLS. CONTROL, PASSING, DRIBBLING.
- TO DEVELOP AGILITY, BALANCE, CO-ORDINATION, SPEED (ABC'S).

Our fully FA qualified coaches have up to date First Aid training and are DBS checked. Each session will be packed full of fun games played in teams, and as individuals, to help children build friendships as well as independence.

**To Book: Text your child's name, school, year group and parent name to 07594 389531**

# Community News

**SANDOWN SUNDAY SOCCER**



## **INTRODUCING OUR FUN FOOTBALL SESSION AT THE BAY PRIMARY SCHOOL SANDOWN!**

### **OUR FUN SESSION WILL BE:**

*Every Sunday 10am-12pm  
at The Bay Primary School,  
Winchester Park Road, Sandown.  
£6 for the 2 hours per child.*

**To Book:** Text your child's  
name, school, year group  
and parent name  
to **07594 389531**



**Sandown Soccer - Isle of Wight**

