



# ST MARY'S Catholic Primary School Newsletter



18th October 2024

St Mary's Catholic Primary School, Amphill Road, Ryde, Isle of Wight. PO33 1LJ 01983 562000 [www.stmaryspri.co.uk](http://www.stmaryspri.co.uk)

Dear Families

I cannot believe we are in our final week of this half term! It really has flown by with so many wonderful learning opportunities for our pupils.

Wednesday was so wonderful for our beach clean up. Thank you to the families who could join us on our stewardship mission of looking after our local environment.

Year four had a fantastic time at the Roman villa this week and have fully enriched their history learning.

Thank you to those parents that have now joined us on boom reader. Please remember, you need to log on via the app and then log each book that your child is reading. If you are not sure, please ask us to help with this.

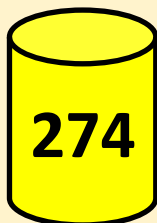
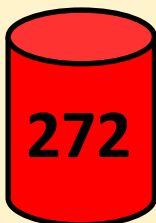
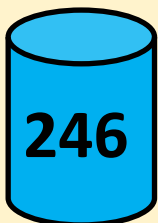
After half term, we will be working closely with our new family worker, Tracey Castle, who will be with us every Tuesday to support families through early help support. If you feel you need some additional support and advice, please contact Tracey via the school office, who will make contact with you.

Have a wonderful half term. We will welcome you all back to school on Monday 4th November at 8.30am

Mrs Broome

## House Point Totals

Well done to St David's **house** who were the winning house this week!



## Our School Lottery

Support our school and  
buy your chance to win  
here -

[https://  
www.yourschoollottery.co.uk/  
lottery/school/st-marys-  
catholic-primary-school.](https://www.yourschoollottery.co.uk/lottery/school/st-marys-catholic-primary-school)

**LIVE LOVE BELIEVE**

# School news!

Congratulations to Zayd in Yr 2 who has achieved his 10m in swimming.  
Well done!



## **NATUREZONES**

*Follow the Pumpkin trail*

*Get Smart with our Halloween Quiz*

*Oct: Sun 27th, Thur 31st,  
Nov: Sat 1st & Sun 2nd*

*Between 10.30 and 2.30 pm*

*Adults £8 Concession £6.*

*Children 4-16 £4.00*

*All tickets include sweet halloween reward*

*Under 4's free*

**PLEASE BOOK - ticket covers any of the days**

**DIRECTIONS, based at Blackwater:**

**[www.naturezones.org.uk](http://www.naturezones.org.uk)**

There is a new government focus on school attendance and are enforcing new rules for children who are absent or that have holidays during term time. This is in place from September 2024. We will be monitoring attendance and lateness everyday and will contact families where we are concerned.

# ATTENDANCE

## WHAT THE NEW RULES MEAN FOR ME

**1**

**I'm a single parent of one child and we want to go on holiday for a week.**

Your holiday will not be authorised and you must talk to the school before you book anything. Because your child will miss 5 school days you will be given a penalty notice fine. The fine is £160 but if you pay it in 21 days it will be reduced to £80.

**£160**



**2**

**FOR EVERY CHILD A PENALTY IS GIVEN.**



+ £160 + £160 + £160 + £160

**4 children & 1 parent = £640**

Reduced to £320 if paid in 21 days

**IRREGULAR ATTENDANCE**

**10 IN 10**

**5**

If your child is absent for 10 or more sessions in 10 weeks and their absences are unauthorised. The school will consider prosecution.

**1 Day = 2 Sessions**

**3**

**FOR A FAMILY OF TWO PARENTS**



+ £160 + £160 + £160 + £160



**4 children & 2 parents = £1280**

Reduced to £640 if paid in 21 days

**If in any period of not more than 3 years, your child has a 2nd and 3rd leave of absence or pattern of irregular attendance...**

**4**

**2ND TIME**

2 parents and 1 child = £320  
2 children = 640  
3 children = 960  
4 children = 1280

**No discount for early payment**



**3RD TIME**

A penalty notice fine will not be given. Instead, your case will be taken to court.

A magistrate can fine each parent £2500 for each child

**1 parent & 4 children = £10,000**  
**2 parents & 4 children = £20,000**

# P.E Days



When it is your day for PE, please come into school in your PE kit. Don't forget your water bottle!

Monday—Year 6

Tuesday—Year 2

Wednesday— EYFS & Year 3

Thursday—Years 4 and 5

Friday— EYFS & Year 1

# Attendance and Lateness

School target 96%

This weeks whole school attendance **91%**

EYFS = 86% & 5 lates

Year 1 = 97% & 1 lates

Year 2 = 90% 13 lates

Year 3 = 97% 4 lates

Year 4 = 92% & 1 lates

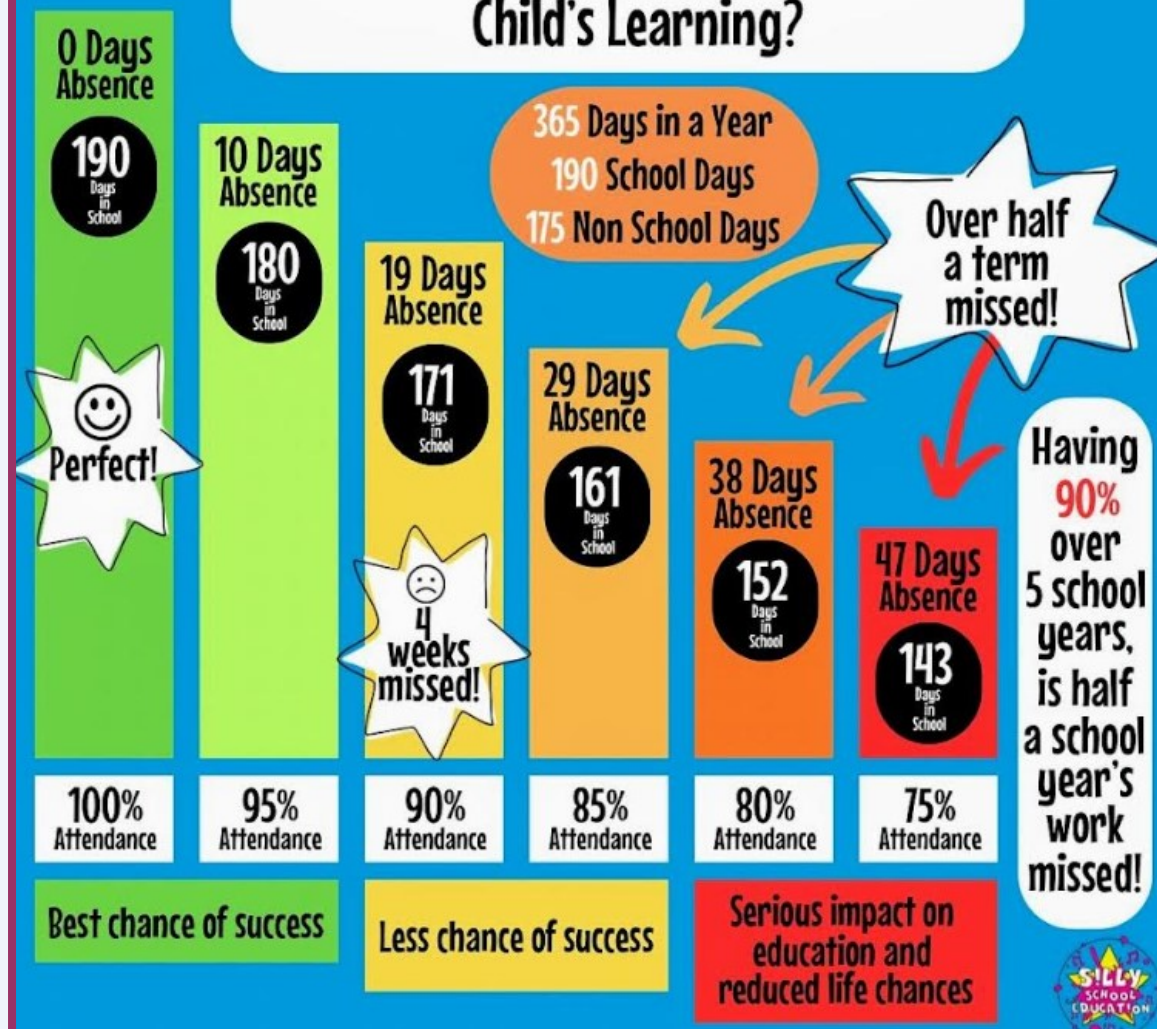
Year 5 = **98%** & 6 lates

Year 6 = 88% & 0 lates



Well done Year **Year 5!** Great work!

## How Does School Attendance Affect a Child's Learning?



# Diary Dates 24-25

NEW DATES WILL BE ADDED IN RED

Monday 21st October—Friday 1st November—  
October Half term—school closed.

Monday 4th November—Autumn 2 starts.

Monday 8th November—Flu Vac

WB Monday 11th November—Anti-bullying  
week

Thursday 14th November—Photos

Friday 15th November—School development  
day—school closed

**Thursday 28th November—yr 3 Buster farm trip**

Thursday 21st November—yr 6 Bikeability

WB 2nd December—parents evenings

Tuesday 10th December—EYFS/KS1 Nativity  
(PM)

Wednesday 11th December—EYFS/KS1 Nativity  
(AM)

Thursday 12th December—KS 2 Carol concert

Friday 20th December—Last day of term

Monday 6th January—Spring 1 starts.

Monday 17th February—Friday 21st February—  
Half term—school closed.

Monday 26th May—Friday 30th May—Half  
term—school closed

Friday 25th July—last day of term

## FREE SCHOOL MEALS

Have your circumstances changed? Could  
you now be entitled to Free School Meals?

To apply online please go to:

[www.iow.gov.uk/council/OtherServices/Free-School-Meals/Key-Stage-1-and-2](http://www.iow.gov.uk/council/OtherServices/Free-School-Meals/Key-Stage-1-and-2)

## Medical Appointments & Leave of Absence Requests

If your child has a hospital/dental  
appointment, please ensure you have  
notified the school office of the time and  
date and handed in a copy of the medical  
letter or appointment card.

Leave of absence request forms for holidays/  
funerals etc. are available upon request at  
the school office.

**Scopay** by 

We are a cashless school and  
only accept payments through  
Scopay. Please contact the  
office if you need to set this  
up.

Please use this service to pay  
for:

School dinners  
After school clubs  
Trips and visits

## Free parking!

Free parking permits are available  
from the school office for the local  
canoe lake car park.

We urge all parents that need to  
drive to and from school to use  
this service as parking around the  
school site is limited and our local  
residents still require access to  
their property at all times.

# Autumn 2024 club list

| Day       | Club offered           | Who can attend | Cost | No of children | Dates                                     |
|-----------|------------------------|----------------|------|----------------|---|
| Monday    | Indoor Cricket         | Yr 1 – Yr 6    | £35  | 30             | 3pm<br>4.30pm                             |
|           | Homework               | KS 2           | £12  | 12             | 3pm 4pm                                   |
| Tuesday   | Netball and Basketball | Yr 1 –Yr 6     | £35  | 30             | 3pm<br>4.30pm                             |
| Wednesday | Indoor Athletics       | Yr 1 –Yr 6     | £35  | 30             | 3pm<br>4.30pm                             |
|           | Art Club               | KS 2           | £35  | 20             | 3pm 4pm                                   |
| Thursday  | Football               | Yr 1 – Yr 6    | £35  | 30             | 3pm<br>4.30pm                             |
| Friday    | Skateboarding          | KS2            | £42  | 30             | 3pm 4<br>pm                               |
|           | Llama Drama            | KS 2           | £30  | 20             | 3pm 4pm<br>Nov 8 15 22 2<br>9<br>Dec 6 13 |
|           |                        |                |      |                |   |

<https://llama-drama-iow.classforkids.io/info/34>

Monday - Indoor Cricket

<https://lircoaching.classforkids.io/info/129>

Tuesday - Basketball/Netball

<https://lircoaching.classforkids.io/info/130>

Wednesday - Indoor Athletics

<https://lircoaching.classforkids.io/info/131>

Thursday - Football

<https://lircoaching.classforkids.io/info/133>

Clubs will run for 7 weeks- sports clubs  
please book through LJR.

Homework, Art, and Skateboarding will  
be available on Scopay.

# School dinner menu

**Chartwells Schools**

## WEEK 1

W/C: 04/11, 25/11, 16/12, 20/01, 10/02, 10/03, 31/03

|   | MONDAY  | TUESDAY   | WEDNESDAY   | THURSDAY  | FRIDAY  |
|---|---|---|---|---|---|
| <b>HOT SPECIALS</b>   | Macaroni Cheese   | Classic Beef Burger<br>Served with Potato Wedges                                      | Roast Gammon<br>Served with Roast Potatoes and Gravy      | BBQ Chicken Pizza<br>Served with Plain Pasta              | Fish Fingers<br>Served with Chips                         |
|   | Cheesy Bean Burrito                                       | Quorn Burger<br>Served with Potato Wedges   | Roast Quorn<br>Served with Roast Potatoes and Gravy       | Meatless Feast Cheesy Pizza<br>Served with Plain Pasta    | Veggie Fingers<br>Served with Chips                       |
| <b>JACKET POTATO</b>  | Jacket Potatoes<br>with a choice of hot and cold fillings | Jacket Potatoes<br>with a choice of hot and cold fillings including Salmon Mayonnaise | Jacket Potatoes<br>with a choice of hot and cold fillings | Jacket Potatoes<br>with a choice of hot and cold fillings | Jacket Potatoes<br>with a choice of hot and cold fillings |
| <b>Tomato Pasta</b> Fresh, homemade tomato sauce with penne pasta |   |   |   |   |   |
| All main meals are served with two vegetables                     |   |   |   |   |   |
| <b>DESSERT</b>  | Flapjack with Fruit                                       | Apple Crumble with Custard  | Rice Pudding with Jam or Chocolate Spread                 | Raspberry Jelly   | Chocolate Brownie   |

**PACKED LUNCH AVAILABLE**  
Ham, Cheese or Tuna baguette available daily with veg sticks and fresh fruit or dessert of the day

**AVAILABLE EVERY DAY**  
Water, salad, freshly baked bread, yoghurt & fresh fruit

Vegetarian Oily Fish Wholegrain  
Fruity! Nutritionist's Choice

**Chartwells Schools**

## WEEK 2

W/C: 11/11, 02/12, 06/01, 27/01, 24/02, 17/03

|   | MONDAY  | TUESDAY   | WEDNESDAY   | THURSDAY   | FRIDAY  |
|---|---|---|---|--|---|
| <b>HOT SPECIALS</b>   | Veggie Supreme Pizza<br>Served with Plain Pasta           | Beef Bolognese<br>Served with Wholewheat Pasta            | Roast Pork<br>Served with Roast Potatoes and Gravy        | Chicken and Vegetable Pie<br>Served with Mashed Potato and Gravy | Fish Fingers<br>Served with Chips                         |
|   | Vegetable Fajita<br>Served with Wholegrain Rice           | Chinese Vegetable Noodles                                 | Winter Vegetable Hotpot<br>Served with Gravy              | Macaroni Cheese  | Quorn Dippers<br>Served with Chips                        |
| <b>JACKET POTATO</b>  | Jacket Potatoes<br>with a choice of hot and cold fillings | Jacket Potatoes<br>with a choice of hot and cold fillings | Jacket Potatoes<br>with a choice of hot and cold fillings | Jacket Potatoes<br>with a choice of hot and cold fillings        | Jacket Potatoes<br>with a choice of hot and cold fillings |
| <b>Tomato Pasta</b> Fresh, homemade tomato sauce with penne pasta |   |   |   |  |   |
| All main meals are served with two vegetables                     |   |   |   |  |   |
| <b>DESSERT</b>  | Crunchy Chocolate Mousse                                  | Apple and Cinnamon Sponge<br>with Custard                 | Fruits of the Forest Jelly                                | Chocolate Cookie   | Orange Glazed Sticky Sponge<br>Pudding                    |

**PACKED LUNCH AVAILABLE**  
Ham, Cheese or Tuna baguette available daily with veg sticks and fresh fruit or dessert of the day

**AVAILABLE EVERY DAY**  
Water, salad, freshly baked bread, yoghurt & fresh fruit

Vegetarian Oily Fish Wholegrain  
Fruity! Nutritionist's Choice

**Chartwells Schools**

## WEEK 3

W/C: 18/11, 09/12, 13/01, 03/02, 03/03, 24/03

|   | MONDAY  | TUESDAY   | WEDNESDAY   | THURSDAY   | FRIDAY  |
|---|---|---|---|--|---|
| <b>HOT SPECIALS</b>   | Cheese and Tomato Pizza<br>Served with Potato Wedges      | Pork Sausages<br>Served with Mashed Potato and Gravy      | Roast Chicken<br>Served with Roast Potatoes and Gravy                         | Chicken and Vegetable Korma<br>Served with Wholegrain Rice | Fish Fingers<br>Served with Chips                         |
|   | BBQ Quorn Fillet<br>Served with Wholegrain Rice           | Quorn Sausages<br>Served with Mashed Potato and Gravy     | Roasted Vegetable and Cranberry Slice<br>Served with Roast Potatoes and Gravy | Tomato and Sweetcorn Pasta                                 | Cheese and Sweetcorn Omelette<br>Served with Chips        |
| <b>JACKET POTATO</b>  | Jacket Potatoes<br>with a choice of hot and cold fillings | Jacket Potatoes<br>with a choice of hot and cold fillings | Jacket Potatoes<br>with a choice of hot and cold fillings                     | Jacket Potatoes<br>with a choice of hot and cold fillings  | Jacket Potatoes<br>with a choice of hot and cold fillings |
| <b>Tomato Pasta</b> Fresh, homemade tomato sauce with penne pasta |   |   |   |  |   |
| All main meals are served with two vegetables                     |   |   |   |  |   |
| <b>DESSERT</b>  | Chocolate Brownie with Orange<br>Slices                   | Bread and Butter Pudding with<br>Custard                  | Oat Cookie with Fruit   | Lemon Shortbread   | Vanilla Ice Cream   |

**PACKED LUNCH AVAILABLE**  
Ham, Cheese or Tuna baguette available daily with veg sticks and fresh fruit or dessert of the day

**AVAILABLE EVERY DAY**  
Water, salad, freshly baked bread, yoghurt & fresh fruit

Vegetarian Oily Fish Wholegrain  
Fruity! Nutritionist's Choice

# FOSMA Information

!

FOSMA is taking a year off! Unfortunately there is such a small group of us trying to plan and organise everything, that it's just not possible to do the job justice this year due to outside commitments.

So instead, we will be raising funds through school-led activities and events. Rest assured we are in the process of planning a few core events for the school so the children won't miss out.

Your fabulous fundraising support will be needed more than ever, so keep an eye out for announcements in the newsletters in future.

Most importantly, if you have an idea for a school fundraising activity that you would like to volunteer to organise, please let the school know.

Thank you for all your incredible support up until now

## St Mary's Catholic Primary School Uniform

### For all pupils:

Navy polo shirt with logo

Navy round neck sweatshirt

Navy cardigan

(Jumpers and Cardigans may be worn without a logo if wished. However, if you wish to you can purchase them from Kids and Co. with a logo or take the item bought elsewhere to Kids and Co. who for a small fee will add the school logo.)

Warm navy-blue tracksuit bottoms (not shiny or branded ones)

These items may be worn in warm weather but you always need to bring in the tracksuit bottoms so we can access the woods easily

Grey knee length skirt

Grey knee length pinafore

Grey shorts

Blue and white checked dress

White or grey socks / tights

Black shoes – the shoes need to be robust so that when the children are outside at lunch or break time as well as when outside learning their feet are supported. Ballet style shoes or ill-fitting shoes do not provide this support and should not be worn.

The shoes must be plain black with no decoration. They may be trainer styled shoes.

### PE Kit

School PE Logo top

Navy shorts/skorts

Plain black trainers (Please provide non-laced ones until your child is able to tie their own laces)

Navy tracksuit bottoms

Navy sweatshirt/hoody

### Hair

The children should wear their hair simply. This means no extreme haircuts including sculpting or shaved designs. No colour in hair. Hair bands and clips should be plain and small.

One small pair of earrings may be worn – if the child is not able to take them out they will be covered in tape during PE

**Temporary tattoos, make up, other jewellery, nail varnish and festival bands should not be worn at school.**

All uniform may be purchased from Kids and Co in Ryde - <https://www.kidsandcodirect.co.uk/>

Finally, please name all items. If you use pen to name the items, you will know that you need to write the name again several times throughout the year as it does wash out.



# School Development Days

Friday 15th November 2024

Monday 28th July 2025

Tuesday 29th July 2025

# Community News



**TAPNELL FARM**  
STAND-ALONE ALL WEATHER EVENT!  
ISLE OF WIGHT

## PUMPKIN FESTIVAL

28<sup>TH</sup> - 31<sup>ST</sup> OCTOBER

MON TO THURS 12-6PM

PICK YOUR OWN PUMPKIN & PUMPKIN CARVING  
FERRET RACING & GOURD GAMES  
VINTAGE FUNFAIR AMUSEMENTS  
LICENSED BAR AND FOOD

OPEN LATE ON MON 28<sup>TH</sup> UNTIL 8.30PM  
WITH ILLUMINATED TRAIL AND LIVE MUSIC FROM...

**VOYE PEDRO**

**PUMPKIN TRAIL**  
12<sup>TH</sup> - 13<sup>TH</sup> AND 19<sup>TH</sup> - 31<sup>ST</sup> OCTOBER  
WALK THE TRAIL & SELECT YOUR PERFECT PUMPKIN!

FULL DETAILS OF EVENTS & ACTIVITIES

[www.tapnellfarm.com/events](http://www.tapnellfarm.com/events)



**TAPNELL FARM PARK**

# WINTER SEASON PASSES

Valid from 7 November 2024 - 21 March 2025

Transferable adult season pass when accompanying a child season pass holder

**£30 PER PERSON**

**ALL WEATHER INDOOR & OUTDOOR PLAY!**

FUN EVENTS ALL YEAR!

JUST £6 PER MONTH!

UNDER 2's ARE FREE!

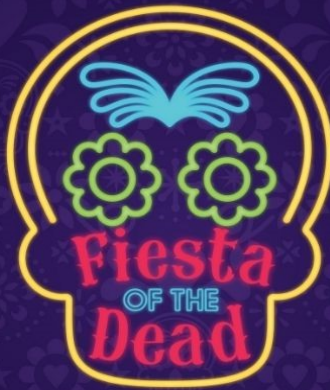
UNLIMITED FREE ENTRY\*

Full details and to purchase (online only)  
[www.tapnellfarm.com/play](http://www.tapnellfarm.com/play)  
see website for full T&C's

# Community News

Celebrate life with the familia at this Award Winning Event at Blackgang Chine

DAZZLING  
LIGHT  
DISPLAYS



SPECTACULAR  
FIRE SHOW



AERIAL  
PERFORMERS

SACRED FIRE  
GARDEN

25TH, 26TH, 29TH, 30TH, 31ST OCT

BOOK NOW AT [BLACKGANGCHINE.COM](http://BLACKGANGCHINE.COM)

# 2025 SEASON PASSES

## EARLY BIRD JUST £49PP

BLACKGANG  
CHINE  
Land of  
Imagination

Unlimited FUN!

Family Events

EXCLUSIVE  
Discounts

FREE Entry to  
Firework Finale

SEE THE SEASON OUT WITH OUR BIGGEST, MOST DAZZLING DISPLAY EVER!

# FIREWORK FINALE

SATURDAY 2ND NOVEMBER

INCLUDED  
IN YOUR  
**2025**  
SEASON PASS

ONLY £15  
INCLUDES A FULL DAY OF THEMES PARK

# Community News

**WESTOVER**  
FARM PUMPKINS

## PUMPKIN PATCH OPEN 10AM - 3PM

Pick your own pumpkins  
Refreshments  
Free entry & car parking



OCT 19TH & 20TH  
OCT 24TH - 27TH

Westover Farm, Calbourne, IW. PO30 4JW

@WestoverFarmIW



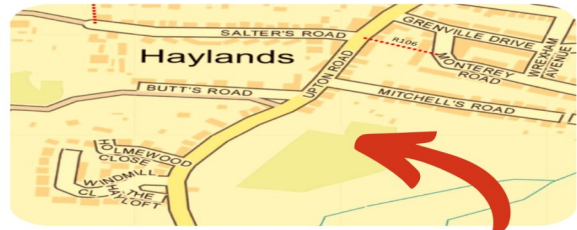
## CREEPLY WOODS

*Fun trail - find all the creepy crawlies to win a medal*

**FREE**

**THURSDAY 31ST OCTOBER  
3:30PM - 5PM**

*ideal for children aged 2-8 years*



## HAYLANDS WOOD

OFF UPTON, RYDE (NEXT TO THE ALLOTMENTS)  
WHAT3WORDS ///BLOWS.SLIPS.TOUR

