



# ST MARY'S Catholic Primary School Newsletter



11th October 2024

St Mary's Catholic Primary School, Amphill Road, Ryde, Isle of Wight. PO33 1LJ 01983 562000 [www.stmaryspri.co.uk](http://www.stmaryspri.co.uk)

RE:

In the Gospel story of the rich young man, Jesus tells us how difficult it is to enter the Kingdom of Heaven when we have many possessions. In the celebration of the word this week, children will be encouraged to think about what is, and what is not, truly valuable in their lives.

It is easier for a camel to pass through the eye of a needle than for a rich man to enter the kingdom of God. **Mark 10:25**

Dear Families

As we rapidly approach the end of this half term, we are still working hard with all of our learning and are starting to enjoy the planned trips for this year.

Year 4 visited the Roman Villa this week as part of their History learning and really enjoyed being immersed in some great real life artefacts and finding out about the Romans on the Isle of Wight.

It was lovely to see so many yellow uniforms today as part of our Go Yellow charity fundraiser. Thank you to everyone who participated and donated for this worthy cause.

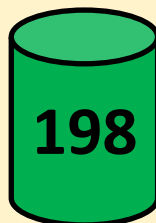
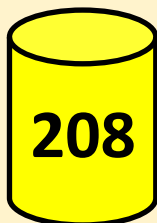
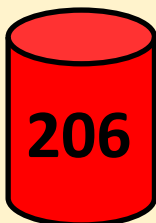
Next Wednesday, we will be taking part in a big beach clean up, that has been arranged by our Steward ambassadors. This will be a parent led clean up and school staff will be there to support this. Our ambassadors wanted to organise this as part of our stewardship role to look after God's earth. We hope to see as many families there as possible from 3pm on Appley Beach.

Have a wonderful weekend

Mrs Broome

## House Point Totals

Well done to St Mary's **house** who were the winning house this week!



## Our School Lottery

Support our school and  
buy your chance to win  
here -

[https://  
www.yourschoollottery.co.uk/  
lottery/school/st-marys-  
catholic-primary-school.](https://www.yourschoollottery.co.uk/lottery/school/st-marys-catholic-primary-school)

**LIVE LOVE BELIEVE**

# School news!

## Parking permits

School park and stride permits are now available from the school office, which enable you to park for free on the Canoe Lake Road between pick up times during term time.

GO YELLOW DAY DAISED £200.30 SO FAR

Thank you to everyone that contributed.

## Dinners

A new menu will be in place after half term.

It will come out next week

## Building Fund

This is now due for the new school year. This can be paid as a one off annual payment of £30. A termly payment of £10 or £2.50 a month. For families with more than one child in school we ask a reduced family donation of £45 a year, £15 a term or £3.75 a month. Alternatively you can pay through the school office or Scopay.

There is a new government focus on school attendance and are enforcing new rules for children who are absent or that have holidays during term time. This is in place from September 2024. We will be monitoring attendance and lateness everyday and will contact families where we are concerned.

# ATTENDANCE

## WHAT THE NEW RULES MEAN FOR ME

**1**

**I'm a single parent of one child and we want to go on holiday for a week.**

Your holiday will not be authorised and you must talk to the school before you book anything. Because your child will miss 5 school days you will be given a penalty notice fine. The fine is £160 but if you pay it in 21 days it will be reduced to £80.

**£160**



**2**

**FOR EVERY CHILD A PENALTY IS GIVEN.**



+ £160 + £160 + £160 + £160

**4 children & 1 parent = £640**

Reduced to £320 if paid in 21 days

**IRREGULAR ATTENDANCE**

**10 IN 10**

**5**

If your child is absent for 10 or more sessions in 10 weeks and their absences are unauthorised. The school will consider prosecution.

**1 Day = 2 Sessions**

**3**

**FOR A FAMILY OF TWO PARENTS**



+ £160 + £160 + £160 + £160

**4 children & 2 parents = £1280**

Reduced to £640 if paid in 21 days

**If in any period of not more than 3 years, your child has a 2nd and 3rd leave of absence or pattern of irregular attendance...**

**4**

**2ND TIME**

2 parents and  
1 child = £320  
2 children = 640  
3 children = 960  
4 children = 1280

**No discount for early payment**



**3RD TIME**

A penalty notice fine will not be given. Instead, your case will be taken to court.

A magistrate can fine each parent £2500 for each child

**1 parent & 4 children = £10,000**  
**2 parents & 4 children = £20,000**

# P.E Days



When it is your day for PE, please come into school in your PE kit. Don't forget your water bottle!

Monday—Year 6

Tuesday—Year 2

Wednesday— EYFS & Year 3

Thursday—Years 4 and 5

Friday— EYFS & Year 1

# Attendance and Lateness

School target 96%

This weeks whole school attendance **91%**

EYFS = 87% & 2 lates

Year 1 = **99%** & 5 lates

Year 2 = 73% 10 lates

Year 3 = 94% 9 lates

Year 4 = 95% & 3 lates

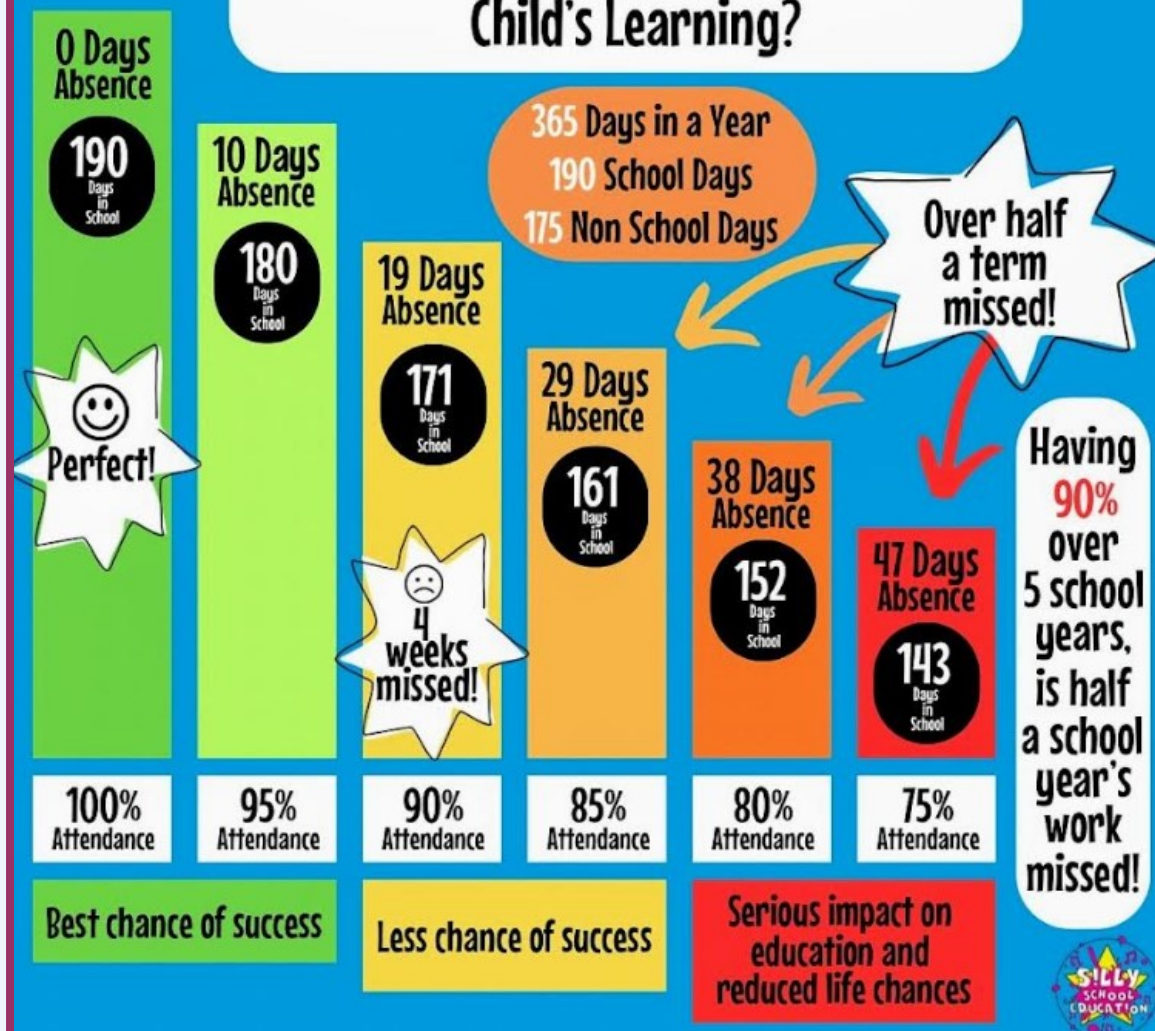
Year 5 = 97% & 4 lates

Year 6 = 83% & 1 late



Well done Year **Year 1!** Great work!

## How Does School Attendance Affect a Child's Learning?



# Diary Dates 24-25

**NEW DATES WILL BE ADDED IN RED**

Wednesday 16th October—Yr 6 Quarr Abby

Monday 21st October—Friday 1st November—  
October Half term—school closed.

Monday 4th November—Autumn 2 starts.

Monday 8th November—Flu Vac

WB Monday 11th November—Anti-bullying  
week

**Thursday 14th November—Photos**

Friday 15th November—School development  
day—school closed

**Thursday 21st November—Yr 6 Bikeability**

WB 2nd December—parents evenings

Tuesday 10th December—EYFS/KS1 Nativity  
(PM)

Wednesday 11th December—EYFS/KS1 Nativity  
(AM)

**Thursday 12th December—KS 2 Carol concert**

Friday 20th December—Last day of term

Monday 6th January—Spring 1 starts.

Monday 17th February—Friday 21st February—  
Half term—school closed.

Monday 26th May—Friday 30th May—Half  
term—school closed

Friday 25th July—last day of term

## FREE SCHOOL MEALS

Have your circumstances changed? Could  
you now be entitled to Free School Meals?

To apply online please go to:

[www.iow.gov.uk/council/OtherServices/Free-School-Meals/Key-Stage-1-and-2](http://www.iow.gov.uk/council/OtherServices/Free-School-Meals/Key-Stage-1-and-2)

## Medical Appointments & Leave of Absence Requests

If your child has a hospital/dental  
appointment, please ensure you have  
notified the school office of the time and  
date and handed in a copy of the medical  
letter or appointment card.

Leave of absence request forms for holidays/  
funerals etc. are available upon request at  
the school office.

**Scopay** by  TUCASI  
Online Payments

We are a cashless school and  
only accept payments through  
Scopay. Please contact the  
office if you need to set this  
up.

Please use this service to pay  
for:

- School dinners
- After school clubs
- Trips and visits

## Free parking!

Free parking permits are available  
from the school office for the local  
canoe lake car park.

We urge all parents that need to  
drive to and from school to use  
this service as parking around the  
school site is limited and our local  
residents still require access to  
their property at all times.

# Autumn 2024 club list

Day	Club offered	Who can attend	Cost	No of children	Dates
Monday	Basket ball	Yr 1 – Yr 6	£33	30	9/9/24 3pm 4.30pm
	Homework	KS 2	£12	12	9/9/24 3pm 4pm
Tuesday	Gymnastics	Yr 1 –Yr 6	£33	30	10/9/24 3pm 4.30pm
Wednesday	Dodgeball	Yr 1 –Yr 6	£33	30	11/9/24 3pm 4.30pm
	Art	KS 2	£30	20	11/9/24 3pm 4pm
Thursday	Football	Yr 1 – Yr 6	£33	30	12/9/24 3pm 4.30pm
Friday	Tag Rugby	Yr1 – Yr 6	£33	30	13/9/24 3pm 4.30pm
	Skateboarding	KS 2	£42	20	13/9/24 3pm 4pm
	Llama Drama	Yr 1 Yr 3	£30	20	13/09/24 3pm 4pm

<https://llama-drama-iow.classforkids.io/info/11>

Monday - Basketball

<https://ljrcoaching.classforkids.io/info/106>

Tuesday - gymnastics

<https://ljrcoaching.classforkids.io/info/107>

Wednesday - Dodgeball

<https://ljrcoaching.classforkids.io/info/108>

Thursday - Football

<https://ljrcoaching.classforkids.io/info/109>

Friday - Tag Rugby

<https://ljrcoaching.classforkids.io/info/110>

Clubs will run for 6 weeks- sports clubs please book through LJR.

Homework, Art, and Skateboarding will be available on Scopay.

Llama Drama has its own link.

# School dinner menu

**Chartwells**  
SCHOOL

## WEEK 1

W/C 15/04, 06/05, 03/06, 24/06, 15/07, 09/08, 30/09

	MONDAY	TUESDAY	WEDNESDAY	THURSDAY	FRIDAY
<b>HOT SPECIALS</b>	Cheese and Tomato Pizza Served with Half a Jacket Potato	Classic Beef Burger Served with Potato Wedges	BBQ Chicken Served with Roast Potatoes	Turkey Lasagne Served with Garlic and Herb Bread	Fish Fingers Served with Chips
<b>JACKET POTATO</b>	BBQ Quorn Fillet Served with Wholegrain Rice	Vegetarian Burger Served with Potato Wedges	Cheesy Ploughman's Picnic Plate	Chilli No Carne with Crispy Tortilla Served with Wholegrain Rice	Quorn Dippers Served with Chips
<b>HERBERT</b>	Jacket Potatoes with a choice of hot and cold fillings	Jacket Potatoes with a choice of hot and cold fillings, including Salmon Mayonnaise	Jacket Potatoes with a choice of hot and cold fillings	Jacket Potatoes with a choice of hot and cold fillings	Jacket Potatoes with a choice of hot and cold fillings
Tomato Pasta Fresh, homemade tomato and basil sauce with penne pasta					
All main meals are served with two vegetables					
<b>HERBERT</b>	Crispy Crackle Bar with Fruit	Raspberry Jelly	Carrot, Orange and Sultana Slice	Vanilla Ice Cream	Original Flapjack

**PACKED LUNCH AVAILABLE**  
Ham, Cheese or Tuna baguette available daily with veg sticks and fresh fruit or dessert of the day

**AVAILABLE EVERY DAY**  
Water, salad, freshly baked bread, yogurt & fresh fruit

Vegetarian Oily Fish Wholegrain Fruity! Nutritionist's Choice

**Chartwells**  
SCHOOL

## WEEK 2

W/C 22/04, 13/05, 10/06, 01/07, 22/07, 16/08, 07/10

	MONDAY	TUESDAY	WEDNESDAY	THURSDAY	FRIDAY
<b>HOT SPECIALS</b>	Cheese and Tomato Pizza Served with Potato Wedges	Beef Bolognese Served with Wholemeal Pasta	Roast Pork Served with Roast Potatoes and Gravy	Butter Chicken Curry Served with Wholegrain Rice	Southern Fried Chicken Served with Chips
<b>JACKET POTATO</b>	Vegetarian Bolognese Served with Wholemeal Pasta	Veggie Burrito	Quorn Roast Served with Roast Potatoes and Gravy	Macaroni Cheese	Veggie Fingers Served with Chips
<b>HERBERT</b>	Jacket Potatoes with a choice of hot and cold fillings	Jacket Potatoes with a choice of hot and cold fillings, including Salmon Mayonnaise	Jacket Potatoes with a choice of hot and cold fillings	Jacket Potatoes with a choice of hot and cold fillings	Jacket Potatoes with a choice of hot and cold fillings
Tomato Pasta Fresh, homemade tomato and basil sauce with penne pasta					
All main meals are served with two vegetables					
<b>HERBERT</b>	Chocolate Cookie	Carrot, Orange and Sultana Slice	Orange Jelly	Chocolate Shortbread with Fruit	Orange Drizzle

**PACKED LUNCH AVAILABLE**  
Ham, Cheese or Tuna baguette available daily with veg sticks and fresh fruit or dessert of the day

**AVAILABLE EVERY DAY**  
Water, salad, freshly baked bread, yogurt & fresh fruit

Vegetarian Oily Fish Wholegrain Fruity! Nutritionist's Choice

**Chartwells**  
SCHOOL

## WEEK 3

W/C 29/04, 20/05, 17/06, 08/07, 02/08, 23/09, 14/10

	MONDAY	TUESDAY	WEDNESDAY	THURSDAY	FRIDAY
<b>HOT SPECIALS</b>	Cheese and Tomato Pizza Served with Potato Wedges	Pork Sausages Served with Mashed Potato and Beans	Roast Chicken Served with Roast Potatoes and Gravy	Chicken and Broccoli Pasta Bake	Fish Fingers Served with Chips
<b>JACKET POTATO</b>	Tomato and Herb Lentil Pasta	Vegetarian Sausage Served with Mashed Potato and Beans	Cheese and Onion Pasta Served with Roast Potatoes and Gravy	Meatless Balls in Tomato Sauce Served with Rainbow Rice	Quorn Dippers Served with Chips
<b>HERBERT</b>	Jacket Potatoes with a choice of hot and cold fillings	Jacket Potatoes with a choice of hot and cold fillings, including Salmon Mayonnaise	Jacket Potatoes with a choice of hot and cold fillings	Jacket Potatoes with a choice of hot and cold fillings	Jacket Potatoes with a choice of hot and cold fillings
Tomato Pasta Fresh, homemade tomato and basil sauce with penne pasta					
All main meals are served with two vegetables					
<b>HERBERT</b>	Chocolate Brownie with Fruit	Strawberry Jelly	Banana Cake	Lemon Sicilian Cookie	Chocolate Ice Cream

**PACKED LUNCH AVAILABLE**  
Ham, Cheese or Tuna baguette available daily with veg sticks and fresh fruit or dessert of the day

**AVAILABLE EVERY DAY**  
Water, salad, freshly baked bread, yogurt & fresh fruit

Vegetarian Oily Fish Wholegrain Fruity! Nutritionist's Choice

# FOSMA Information

## FOSMA NEEDS YOU!!

We hope your child is settling into the new school year well and you had a great summer.

### What is FOSMA?

The Friends of St Marys Association. As a group of parents, guardians and carers of children at St Mary's, FOSMA'S aim is to support our children and the school community by raising money to pay for the things that will enrich the school lives of our children through fun, discovery and play. Sometimes we need to support the school with the serious stuff too, like IT equipment and other resources because, as we all know, times are tough and budgets are tight.

Amongst other things last year we were able to purchase leaving hoodies for year 6 children, raise finance for new SEND supplies for the school, provide the Travelling Tales story day for the whole school, as well as running school discos and the summer fayre and holding cake stalls and ice lolly sales.

### So how can you help?

Big or small, all help is welcome and needed! We're always looking for parents to help at events, come up with fundraising ideas or help to plan the activities; so get in touch if you can help - no experience necessary! But we know not everyone has much time to spare, so you can help by donating cakes to sell at the various events we run; raising sponsorship money from family and friends; donating £1 on fancy-dress days; serving squash at the school discos and many more ways besides. You decide how much you can get involved, but remember that every bit of help makes a difference. Every time you support FOSMA it raises a bit more money for the school and the children, so thank you.

### Get in touch

Email us at [fosma@stmaryspri.co.uk](mailto:fosma@stmaryspri.co.uk) or chat to a member!

Every year group has a FOSMA representative that you can chat to and who will share news and updates.

We're busy planning the fun stuff for the Autumn term, so look out for dates in the school calendar (the first 2 are in already) and more details will be coming very soon.

So keep an eye on the newsletter and remember we would love as many of you to come forward with ideas and volunteer to help whenever you can – we can't do it without you!

Thank you – The FOSMA team

## St Mary's Catholic Primary School Uniform

### For all pupils:

Navy polo shirt with logo

Navy round neck sweatshirt

Navy cardigan  
(Jumpers and Cardigans may be worn without a logo if wished. However, if you wish to you can purchase them from Kids and Co. with a logo or take the item bought elsewhere to Kids and Co. who for a small fee will add the school logo.)

Warm navy-blue tracksuit bottoms (not shiny or branded ones)

These items may be worn in warm weather but you always need to bring in the tracksuit bottoms so we can access the woods easily

Grey knee length skirt  
Grey knee length pinafore  
Grey shorts  
Blue and white checked dress

White or grey socks / tights

Black shoes – the shoes need to be robust so that when the children are outside at lunch or break time as well as when outside learning their feet are supported. Ballet style shoes or ill-fitting shoes do not provide this support and should not be worn.  
The shoes must be plain black with no decoration. They may be trainer styled shoes.

### PE Kit

School PE Logo top  
Navy shorts/skorts  
Plain black trainers (Please provide non-laced ones until your child is able to tie their own laces)  
Navy tracksuit bottoms  
Navy sweatshirt/hoody

### Hair

The children should wear their hair simply. This means no extreme haircuts including sculpting or shaved designs. No colour in hair. Hair bands and clips should be plain and small.  
One small pair of earrings may be worn – if the child is not able to take them out they will be covered in tape during PE

**Temporary tattoos, make up, other jewellery, nail varnish and festival bands should not be worn at school.**

All uniform may be purchased from Kids and Co in Ryde - <https://www.kidsandcodirect.co.uk/>

Finally, please name all items. If you use pen to name the items, you will know that you need to write the name again several times throughout the year as it does wash out.



# School Development Days

Friday 15th November 2024

Monday 28th July 2025

Tuesday 29th July 2025

# Community News



**TAPNELL FARM**  
STAND-ALONE ALL WEATHER EVENT!  
ISLE OF WIGHT

## PUMPKIN FESTIVAL

28<sup>TH</sup> - 31<sup>ST</sup> OCTOBER

MON TO THURS 12-6PM

PICK YOUR OWN PUMPKIN & PUMPKIN CARVING  
FERRET RACING & GOURD GAMES  
VINTAGE FUNFAIR AMUSEMENTS  
LICENSED BAR AND FOOD

OPEN LATE ON MON 28<sup>TH</sup> UNTIL 8.30PM  
WITH ILLUMINATED TRAIL AND LIVE MUSIC FROM...

**VOYE PEDRO**

**PUMPKIN TRAIL**  
12<sup>TH</sup> - 13<sup>TH</sup> AND 19<sup>TH</sup> - 31<sup>ST</sup> OCTOBER  
WALK THE TRAIL & SELECT YOUR PERFECT PUMPKIN!

FULL DETAILS OF EVENTS & ACTIVITIES

[www.tapnellfarm.com/events](http://www.tapnellfarm.com/events)



**TAPNELL FARM PARK**

# WINTER SEASON PASSES

Valid from 7 November 2024 - 21 March 2025

Transferable adult season pass when accompanying a child season pass holder

**£30 PER PERSON**

**ALL WEATHER INDOOR & OUTDOOR PLAY!**

FUN EVENTS ALL YEAR!

JUST £6 PER MONTH!

UNDER 2's ARE FREE!

UNLIMITED FREE ENTRY\*

Full details and to purchase (online only)  
[www.tapnellfarm.com/play](http://www.tapnellfarm.com/play)  
see website for full T&C's

# Community News

CHRIST THE KING COLLEGE



## YEAR 6 TOURS

**BREAKING** NEWS

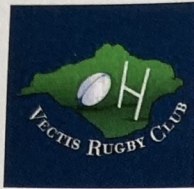
Still undecided in your  
Secondary School choice?

The College is offering a tour during the half term break on

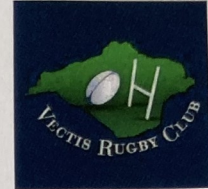
**Tuesday 22<sup>nd</sup> Oct at 10am**

*Our new Year 7 students for 2025 will  
be provided with a New School blazer  
and PE top, paid for by the College.*

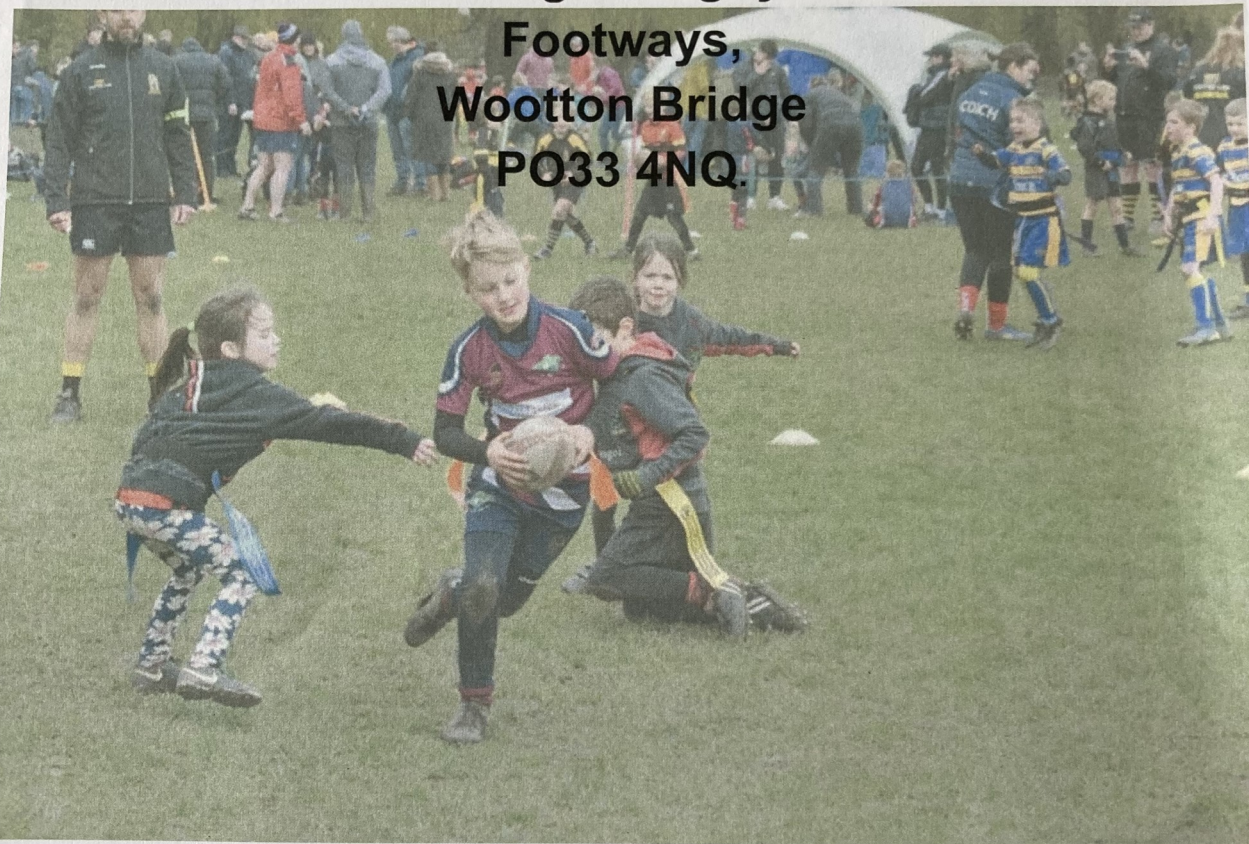
# Community News



**VECTIS RUGBY CLUB**  
**U10 + U11 PLAYERS**  
**WANTED!**



**Isle of Wight Rugby Club,  
Footways,  
Wootton Bridge  
PO33 4NQ.**



**SUNDAYS 10-11.00 AM**  
**<https://vectisrfc.rfu.club/>**  
**or**  
**[vectisrfcchair@gmail.com](mailto:vectisrfcchair@gmail.com)**