



ST MARY'S Catholic Primary School Newsletter



13th September 2024

St Mary's Catholic Primary School, Amphill Road, Ryde, Isle of Wight. PO33 1LJ 01983 562000 www.stmaryspri.co.uk

RE:

In this week's Gospel, Jesus' disciples argue about who is the 'greatest'. Children will discover that the most important things in life are not winning, being the best or most beautiful. Instead, Jesus taught His disciples that to be the greatest in God's sight, we must put others first.

If anyone wants to be first, he must make himself last of all and servant of all.

Mark 9:35

Dear Families

We have had another great week, full of learning and excitement at St Mary's.

Our reception children have started learning lots of new sounds in phonics and are really enjoying their sessions and getting to practice producing these sounds ready for early reading! Just a reminder, that all children should be coming home with a reading book that should be read at least 3 times a week. Reading really is the key that unlocks all other learning so please encourage your children to read as much as possible and to sign their reading passports so they can gain their free books.

Next Tuesday morning (24th September) we are holding an EYFS open morning, 9 - 11am, where any new families that are thinking about next September for their little ones can come and see us in action! Please share this far and wide so we can continue to grow our community.

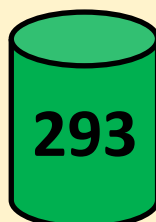
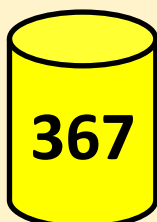
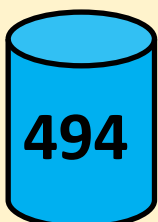
We are still waiting for a number of responses for our facebook letter. We loved to celebrate and share what we do as a school so please send these back ASAP so I can upload the photos from this term.

We are delighted to share that Miss Rose is having a baby! We are so pleased that we can share this news with you. Miss Rose will be with us until March next year so we have plenty of time to see her blossom. I am sure you will join me in wishing her well.

Mrs Broome

House Point Totals

Well done to St Mary's **house** who were the winning house this week!



Our School Lottery

Support our school and
buy your chance to win
here -

[https://
www.yourschoollottery.co.uk/
lottery/school/st-marys-
catholic-primary-school.](https://www.yourschoollottery.co.uk/lottery/school/st-marys-catholic-primary-school)

LIVE LOVE BELIEVE

Parking permits

School park and stride permits are now available from the school office, which enable you to park for free on the Canoe Lake Road between pick up times during term time.

Shoe box appeal

Shoebboxes and leaflets are now available from the school office. This year the Rotary shoebox scheme are collecting for the disadvantaged and displaced children in Moldova , Montenegro, Romania and Ukraine via Poland.

Facebook

We are still waiting on the return of some permission face book forms. All forms need to be returned with the relevant box ticked.

There is a new government focus on school attendance and are enforcing new rules for children who are absent or that have holidays during term time. This is in place from September 2024. We will be monitoring attendance and lateness everyday and will contact families where we are concerned.

ATTENDANCE

WHAT THE NEW RULES MEAN FOR ME

1

I'm a single parent of one child and we want to go on holiday for a week.

Your holiday will not be authorised and you must talk to the school before you book anything. Because your child will miss 5 school days you will be given a penalty notice fine. The fine is £160 but if you pay it in 21 days it will be reduced to £80.

£160



2

FOR EVERY CHILD A PENALTY IS GIVEN.



+ £160 + £160 + £160 + £160

4 children & 1 parent = £640

Reduced to £320 if paid in 21 days

IRREGULAR ATTENDANCE

10 IN 10

5

If your child is absent for 10 or more sessions in 10 weeks and their absences are unauthorised. The school will consider prosecution.

1 Day = 2 Sessions

3

FOR A FAMILY OF TWO PARENTS



+ £160 + £160 + £160 + £160

4 children & 2 parents = £1280

Reduced to £640 if paid in 21 days

If in any period of not more than 3 years, your child has a 2nd and 3rd leave of absence or pattern of irregular attendance...

4

2ND TIME

2 parents and
1 child = £320
2 children = 640
3 children = 960
4 children = 1280

No discount for early payment



3RD TIME

A penalty notice fine will not be given. Instead, your case will be taken to court.

A magistrate can fine each parent £2500 for each child

1 parent & 4 children = £10,000
2 parents & 4 children = £20,000

P.E Days



When it is your day for PE, please come into school in your PE kit. Don't forget your water bottle!

Monday—Year 6

Tuesday—Year 2

Wednesday— EYFS & Year 3

Thursday—Years 4 and 5

Friday— EYFS & Year 1

Attendance and Lateness

School target 96%

This weeks whole school attendance **xxx%**

EYFS = 92% & 0 late

Year 1 = 95% & 1 late

Year 2 = 98% 8 lates

Year 3 = **97%** 3l ates

Year 4 = 92% & 0 lates

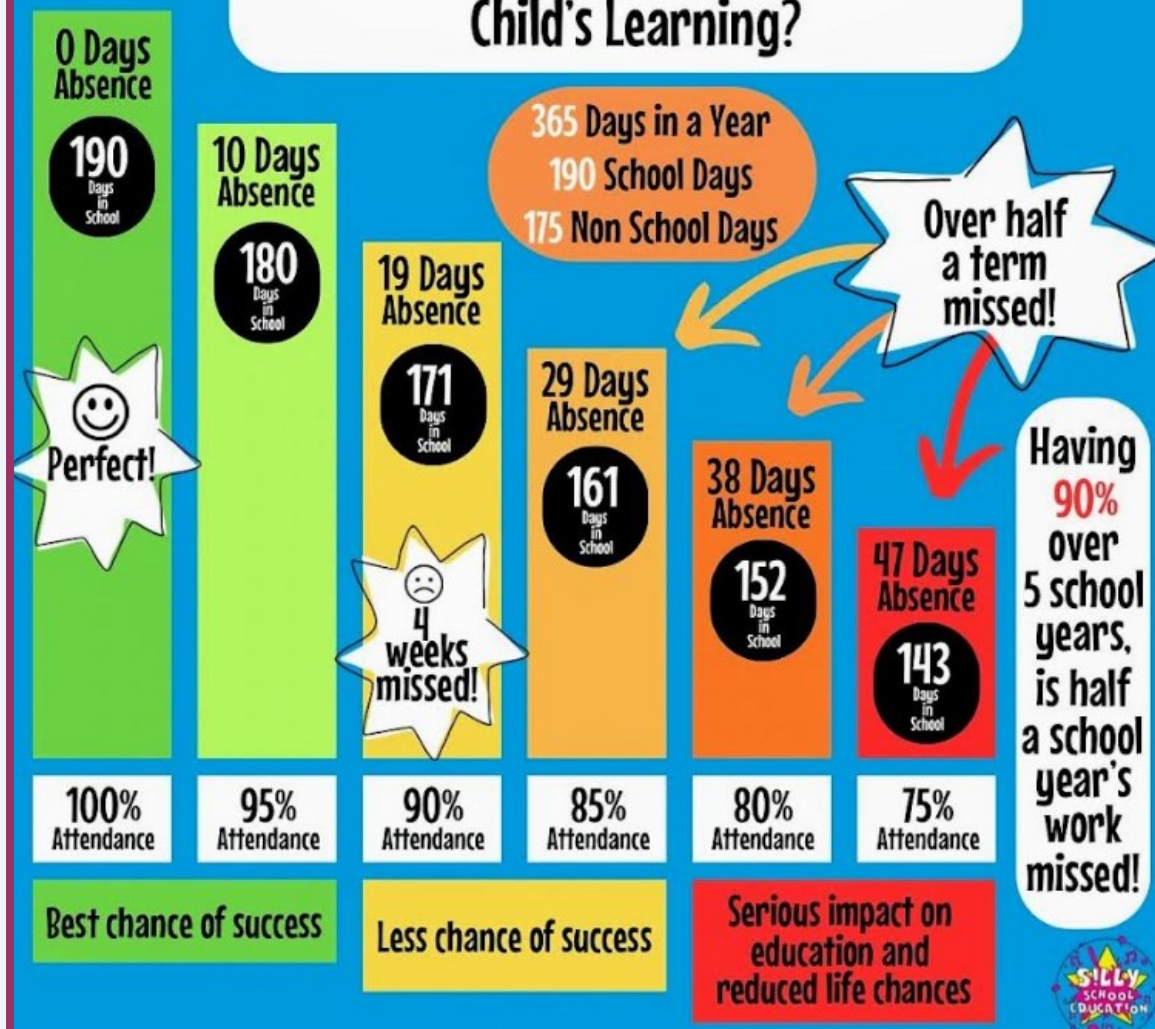
Year 5 = 96% & 1 late

Year 6 = 97% & 3 lates



Well done Year **Year 3!** Great work!

How Does School Attendance Affect a Child's Learning?



Diary Dates 24-25

NEW DATES WILL BE ADDED IN RED

Tuesday 24th September—EYFS open morning
9—11am

26th September—Languages day

Tuesday 8th 1 October—EYFS open morning
9—11am

Thursday 10th October—Yr 4 Roman Villa

Monday 21st October—Friday 1st November—
October Half term—school closed.

Monday 4th November—Autumn 2 starts.

WB Monday 11th November—Anti-bullying
week

Friday 15th November—School development
day—school closed

WB 2nd December—parents evenings

Tuesday 10th December—EYFS/KS1 Nativity
(PM)

Wednesday 11th December—EYFS/KS1 Nativity
(AM)

Friday 20th December—Last day of term

Monday 6th January—Spring 1 starts.

Monday 17th February—Friday 21st February—
Half term—school closed.

Monday 26th May—Friday 30th May—Half
term—school closed

Friday 25th July—last day of term

FREE SCHOOL MEALS

Have your circumstances changed? Could
you now be entitled to Free School Meals?

To apply online please go to:

www.iow.gov.uk/council/OtherServices/Free-School-Meals/Key-Stage-1-and-2

Medical Appointments & Leave of Absence Requests

If your child has a hospital/dental
appointment, please ensure you have
notified the school office of the time and
date and handed in a copy of the medical
letter or appointment card.

Leave of absence request forms for holidays/
funerals etc. are available upon request at
the school office.

Scopay by  TUCASI
Online Payments

We are a cashless school and
only accept payments through
Scopay. Please contact the
office if you need to set this
up.

Please use this service to pay
for:

- School dinners
- After school clubs
- Trips and visits

Free parking!

Free parking permits are available
from the school office for the local
canoe lake car park.

We urge all parents that need to
drive to and from school to use
this service as parking around the
school site is limited and our local
residents still require access to
their property at all times.

Autumn 2024 club list

| Day | Club offered | Who can attend | Cost | No of children | Dates |
|-----------|---------------|----------------|------|----------------|-----------------------|
| Monday | Basket ball | Yr 1 – Yr 6 | £33 | 30 | 9/9/24 3pm 4.30pm |
| | Homework | KS 2 | £12 | 12 | 9/9/24 3pm 4pm |
| Tuesday | Gymnastics | Yr 1 –Yr 6 | £33 | 30 | 10/9/24 3pm 4.30pm |
| Wednesday | Dodgeball | Yr 1 –Yr 6 | £33 | 30 | 11/9/24 3pm 4.30pm |
| | Art | KS 2 | £30 | 20 | 11/9/24 3pm 4pm |
| Thursday | Football | Yr 1 – Yr 6 | £33 | 30 | 12/9/24 3pm 4.30pm |
| Friday | Tag Rugby | Yr1 – Yr 6 | £33 | 30 | 13/9/24 3pm 4.30pm |
| | Skateboarding | KS 2 | £42 | 20 | 13/9/24 3pm 4pm |
| | Llama Drama | Yr 1 Yr 3 | £30 | 20 | 13/09/24 3pm 4pm |

<https://llama-drama-iow.classforkids.io/info/11>

Monday - Basketball

<https://ljrcoaching.classforkids.io/info/106>

Tuesday - gymnastics

<https://ljrcoaching.classforkids.io/info/107>

Wednesday - Dodgeball

<https://ljrcoaching.classforkids.io/info/108>

Thursday - Football

<https://ljrcoaching.classforkids.io/info/109>

Friday - Tag Rugby

<https://ljrcoaching.classforkids.io/info/110>

Clubs will run for 6 weeks- sports clubs please book through LJR.

Homework, Art, and Skateboarding will be available on Scopay.

Llama Drama has its own link.

School dinner menu

Chartwells **WEEK 1**
W/C 15/04, 06/05, 03/06, 24/06, 15/07, 09/08, 30/09

| | MONDAY | TUESDAY | WEDNESDAY | THURSDAY | FRIDAY |
|--|---|--|---|---|---|
| HOT SPECIALS | Cheese and Tomato Pizza Served with Half a Jacket Potato | Classic Beef Burger Served with Potato Wedges | BBQ Chicken Served with Roast Potatoes | Turkey Lasagne Served with Garlic and Herb Bread | Fish Fingers Served with Chips |
| JACKET POTATO | BBQ Quorn Fillet Served with Wholegrain Rice | Vegetarian Burger Served with Potato Wedges | Cheesy Ploughman's Picnic Plate | Chilli No Carne with Crispy Tortilla Served with Wholegrain Rice | Quorn Dippers Served with Chips |
| HOT SPECIALS | Jacket Potatoes with a choice of hot and cold fillings | Jacket Potatoes with a choice of hot and cold fillings, including Salmon Mayo | Jacket Potatoes with a choice of hot and cold fillings | Jacket Potatoes with a choice of hot and cold fillings | Jacket Potatoes with a choice of hot and cold fillings |
| Tomato Pasta Fresh, homemade tomato and basil sauce with penne pasta | | | | | |
| All main meals are served with two vegetables | | | | | |
| DESSERT | Crispy Crackle Bar with Fruit | Raspberry Jelly | Carrot, Orange and Sultana Slice | Vanilla Ice Cream | Original Flapjack |

PACKED LUNCH AVAILABLE
Ham, Cheese or Tuna baguette available daily with veg sticks and fresh fruit or dessert of the day

AVAILABLE EVERY DAY
Water, salad, freshly baked bread, yogurt & fresh fruit

Vegetarian Oily Fish Wholegrain Fruity! Nutritionist's Choice

Chartwells **WEEK 2**
W/C 22/04, 13/05, 10/06, 01/07, 22/07, 16/08, 07/10

| | MONDAY | TUESDAY | WEDNESDAY | THURSDAY | FRIDAY |
|--|---|--|---|---|---|
| HOT SPECIALS | Cheese and Tomato Pizza Served with Potato Wedges | Beef Bolognese Served with Wholemeal Pasta | Roast Pork Served with Roast Potatoes and Gravy | Butter Chicken Curry Served with Wholegrain Rice | Southern Fried Chicken Served with Chips |
| JACKET POTATO | Vegetarian Bolognese Served with Wholemeal Pasta | Veggie Burrito | Quorn Roast Served with Roast Potatoes and Gravy | Macaroni Cheese | Veggie Fingers Served with Chips |
| HOT SPECIALS | Jacket Potatoes with a choice of hot and cold fillings | Jacket Potatoes with a choice of hot and cold fillings, including Salmon Mayo | Jacket Potatoes with a choice of hot and cold fillings | Jacket Potatoes with a choice of hot and cold fillings | Jacket Potatoes with a choice of hot and cold fillings |
| Tomato Pasta Fresh, homemade tomato and basil sauce with penne pasta | | | | | |
| All main meals are served with two vegetables | | | | | |
| DESSERT | Chocolate Cookie | Carrot, Orange and Sultana Slice | Orange Jelly | Chocolate Shortbread with Fruit | Orange Drizzle |

PACKED LUNCH AVAILABLE
Ham, Cheese or Tuna baguette available daily with veg sticks and fresh fruit or dessert of the day

AVAILABLE EVERY DAY
Water, salad, freshly baked bread, yogurt & fresh fruit

Vegetarian Oily Fish Wholegrain Fruity! Nutritionist's Choice

Chartwells **WEEK 3**
W/C 29/04, 20/05, 17/06, 08/07, 02/08, 23/09, 14/10

| | MONDAY | TUESDAY | WEDNESDAY | THURSDAY | FRIDAY |
|--|---|--|--|--|---|
| HOT SPECIALS | Cheese and Tomato Pizza Served with Potato Wedges | Pork Sausages Served with Mashed Potato and Beans | Roast Chicken Served with Roast Potatoes and Gravy | Chicken and Broccoli Pasta Bake | Fish Fingers Served with Chips |
| JACKET POTATO | Tomato and Herb Lentil Pasta | Vegetarian Sausage Served with Mashed Potato and Beans | Cheese and Onion Pasta Served with Roast Potatoes and Gravy | Meatless Balls in Tomato Sauce Served with Rainbow Rice | Quorn Dippers Served with Chips |
| HOT SPECIALS | Jacket Potatoes with a choice of hot and cold fillings | Jacket Potatoes with a choice of hot and cold fillings, including Salmon Mayo | Jacket Potatoes with a choice of hot and cold fillings | Jacket Potatoes with a choice of hot and cold fillings | Jacket Potatoes with a choice of hot and cold fillings |
| Tomato Pasta Fresh, homemade tomato and basil sauce with penne pasta | | | | | |
| All main meals are served with two vegetables | | | | | |
| DESSERT | Chocolate Brownie with Fruit | Strawberry Jelly | Banana Cake | Lemon Sicilian Cookie | Chocolate Ice Cream |

PACKED LUNCH AVAILABLE
Ham, Cheese or Tuna baguette available daily with veg sticks and fresh fruit or dessert of the day

AVAILABLE EVERY DAY
Water, salad, freshly baked bread, yogurt & fresh fruit

Vegetarian Oily Fish Wholegrain Fruity! Nutritionist's Choice

FOSMA Information

FOSMA NEEDS YOU!!

We hope your child is settling into the new school year well and you had a great summer.

What is FOSMA?

The Friends of St Marys Association. As a group of parents, guardians and carers of children at St Mary's, FOSMA'S aim is to support our children and the school community by raising money to pay for the things that will enrich the school lives of our children through fun, discovery and play. Sometimes we need to support the school with the serious stuff too, like IT equipment and other resources because, as we all know, times are tough and budgets are tight.

Amongst other things last year we were able to purchase leaving hoodies for year 6 children, raise finance for new SEND supplies for the school, provide the Travelling Tales story day for the whole school, as well as running school discos and the summer fayre and holding cake stalls and ice lolly sales.

So how can you help?

Big or small, all help is welcome and needed! We're always looking for parents to help at events, come up with fundraising ideas or help to plan the activities; so get in touch if you can help - no experience necessary! But we know not everyone has much time to spare, so you can help by donating cakes to sell at the various events we run; raising sponsorship money from family and friends; donating £1 on fancy-dress days; serving squash at the school discos and many more ways besides. You decide how much you can get involved, but remember that every bit of help makes a difference. Every time you support FOSMA it raises a bit more money for the school and the children, so thank you.

Get in touch

Email us at fosma@stmaryspri.co.uk or chat to a member!

Every year group has a FOSMA representative that you can chat to and who will share news and updates.

We're busy planning the fun stuff for the Autumn term, so look out for dates in the school calendar (the first 2 are in already) and more details will be coming very soon.

So keep an eye on the newsletter and remember we would love as many of you to come forward with ideas and volunteer to help whenever you can – we can't do it without you!

Thank you – The FOSMA team

St Mary's Catholic Primary School Uniform

For all pupils:

Navy polo shirt with logo

Navy round neck sweatshirt

Navy cardigan
(Jumpers and Cardigans may be worn without a logo if wished. However, if you wish to you can purchase them from Kids and Co. with a logo or take the item bought elsewhere to Kids and Co. who for a small fee will add the school logo.)

Warm navy-blue tracksuit bottoms (not shiny or branded ones)

These items may be worn in warm weather but you always need to bring in the tracksuit bottoms so we can access the woods easily

Grey knee length skirt
Grey knee length pinafore
Grey shorts
Blue and white checked dress

White or grey socks / tights

Black shoes – the shoes need to be robust so that when the children are outside at lunch or break time as well as when outside learning their feet are supported. Ballet style shoes or ill-fitting shoes do not provide this support and should not be worn.
The shoes must be plain black with no decoration. They may be trainer styled shoes.

PE Kit

School PE Logo top
Navy shorts/skorts
Plain black trainers (Please provide non-laced ones until your child is able to tie their own laces)
Navy tracksuit bottoms
Navy sweatshirt/hoody

Hair

The children should wear their hair simply. This means no extreme haircuts including sculpting or shaved designs. No colour in hair. Hair bands and clips should be plain and small.
One small pair of earrings may be worn – if the child is not able to take them out they will be covered in tape during PE

Temporary tattoos, make up, other jewellery, nail varnish and festival bands should not be worn at school.

All uniform may be purchased from Kids and Co in Ryde - <https://www.kidsandcodirect.co.uk/>

Finally, please name all items. If you use pen to name the items, you will know that you need to write the name again several times throughout the year as it does wash out.



School Development Days

Monday 2nd September 2024

Tuesday 3rd September 2024

Friday 15th November 2024

Monday 28th July 2025

Tuesday 29th July 2025



Community News

Ryde Academy Open Evening

October 9th
4:00pm - 7:00pm

Parent Presentations 5:00pm and 6:00pm



Wight Orienteers

Wight Orienteers Autumn Events will start with an event at The Needles on Sunday October 6th (parking at Warren Farm). The next will be at Firestone Copse, Wootton on Sunday 17th November and the Christmas event will be on Sunday 22nd December at Borthwood Copse, Apse Heath. There will be courses for all abilities and helpful volunteers to get you started. Arrive between 10am and 12. Cost for juniors will be just £1. Non-member adults £8, and families £10. Family friendly events.

See our website and facebook page for more details: [Wight Orienteers](#)

Community News

Isle of Wight Secondary Colleges and 6th Form
2024-25 Open Day/Evening dates
(as at 9 August 2024)

| School/College | Date | Time |
|---------------------------|--|--|
| Carisbrooke College | 1 October 2024 | Year 6 open evening: 5-8pm |
| Christ the King College | 19 September 2024 | Year 6 open evening: 5.30-7.30pm |
| | 07 November 2024 | 6 th Form open evening: 5.30-7.30pm |
| Cowes Enterprise College | 1 st to 24 th October 2024 | Year 6 45-minute bookable tours will take place on Tuesdays and Thursdays and will be led by a member of the senior leadership team who will be able to answer any specific questions you have about year 7, our curriculum and enrichment opportunities. Tour times to be confirmed. <i>Bookings can be made by calling the academy on 01983 203103 from the 2nd September 2024</i> |
| | November 2024 | 6th Form Open Month. Tours will take place on Mondays, Wednesdays and Thursdays around the sixth form campus, providing a first-hand experience of what it is like to be a student at Cowes Sixth Form. <i>Bookings can be made by calling the academy on 01983 203103 from the 2nd September 2024</i> |
| Island Free School | 12 October 2024 | Y6 open day: 09.30-1pm Headmaster's Talks at 10am, 11am and 12noon |
| Medina College | 26 September 2024 | Year 6 open evening: 5-8pm |
| Ryde Academy | 9 October 2024 | Y6 Open Evening |
| | 20 November 2024 | 6th Form Open Evening |
| Ryde School | 5 October 2024 | Y6 and 6 th Form Open Morning: 10-12.30pm |
| The Bay CE School | 3 October 2024 | Y6 Open Evening: 5-8pm |
| The Island VI Form | 14 November 2024 | VI Form open evening: 5-8pm |
| The Isle of Wight College | 26 June 2024 | 4-7pm Open Evening |
| | 24 September 2024 | 4-7pm Open Evening |
| | 16 November 2024 | Open Day |
| | 8 January 2025 | 4-7pm Open Evening |
| | 1 February 2025 | Open Day |
| | 24 April 2025 | 4-7pm Open Evening |

Community News

RYDE SAINTS FC GIRLS FOOTBALL



FOR ALL GIRLS IN SCHOOL
YEARS 2,3 AND 4
THURSDAYS 6-7PM AT
SMALLBROOK ASTRO (Ashey Road,
PO33 4BH)

Contact jaydenfrankling@gmail.com with any questions