



# ST MARY'S Catholic Primary School Newsletter



19th December 2025

St Mary's Catholic Primary School, Amphill Road, Ryde, Isle of Wight. PO33 1LJ 01983 562000 [www.stmaryspri.co.uk](http://www.stmaryspri.co.uk)

## Celebration of the word

This week, we learned about Matthew 11:2-11 (NIV) Messengers from John the Baptist. Jesus replied, "Go back and report to John what you hear and see: 5 The blind receive sight, the lame walk, those who have leprosy[a] are cleansed, the deaf hear, the dead are raised, and the good news is proclaimed to the poor.

Dear families,

I cannot believe this is the last newsletter of 2025!

The whole of the staffing team would like to thank our community for your continued support and consistency to ensure our children receive the best possible education at St Mary's. Having a team around the child approach, where everyone is working together really does make a difference, so thank you!

I have added the new PE schedule to this newsletter, so please make sure you know when your child's PE day is as there have been a few changes.

Don't forget that the school is closed on Monday 5th January so staff training. Children should return to school at 8.20am on Tuesday 6th January.

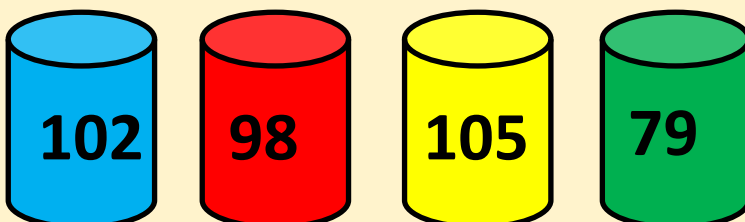
I hope you all have a wonderful Christmas and New Year.

See you all in 2026!

Mrs Broome

## House Point Totals

Well done to **St David's house** who were the winning house this week!



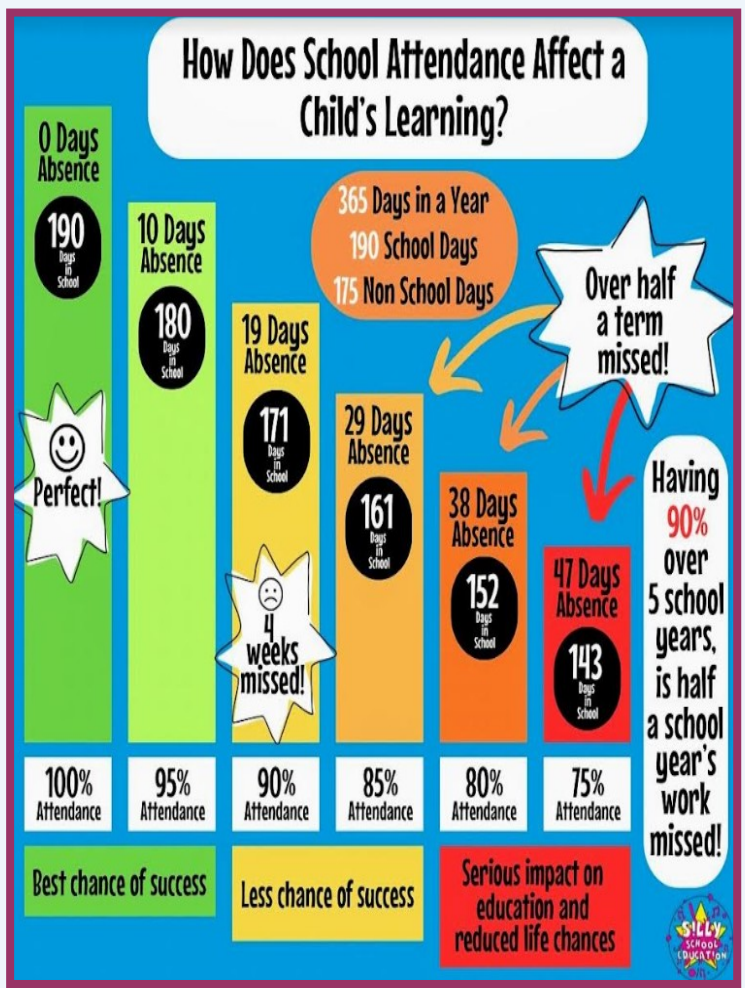
## Our School Lottery

Support our school and  
buy your chance to win  
here -

[https://  
www.yourschoollottery.co.uk/  
lottery/school/st-marys-  
catholic-primary-school.](https://www.yourschoollottery.co.uk/lottery/school/st-marys-catholic-primary-school)

**LIVE LOVE BELIEVE**

<b>PHYSICAL EDUCATION</b>	<b>AUTUMN 1 2025</b>	
	MONDAY	<b>YEAR TWO</b>
	TUESDAY	<b>YEAR THREE &amp; EYFS</b>
	WEDNESDAY	<b>YEAR ONE &amp; FIVE</b>
	THURSDAY	<b>YEAR FOUR &amp; SIX</b>
	FRIDAY	<b>EYFS &amp; YEAR ONE</b>



# Attendance and Lateness

School target 96%

This weeks whole school attendance **91.3%**

Unfortunately our system is down so there isn't any available data this week.

- EYFS = **84.5% 7 lates**
- Year 1 = **82% 3 lates**
- Year 2 = **91.8% 5 lates**
- Year 3 = **91.2% 5 lates**
- Year 4 = **93.8% 5 lates**
- Year 5 = **85.6% 3 lates**
- Year 6 = **86.6% 4 lates**

Well done Year 4 Great work!

# EYFS News

What a busy term.

We have been working on using longer sentences and asking our friends for help, not just the adults. We have been Christmas crafting , dancing, building, reading, singing and having fun.

This week we had our party and a special visitor came and gave us all presents

We are all tired and ready for a rest.

Merry Christmas everyone

See you in 2026!



# Diary Dates 25-26

**NEW DATES WILL BE ADDED IN RED**

**Monday 5th January—School closed—  
development day**

**Tuesday 6th January—Children back to school**

**Wednesday 7th January—Whole school mass**

**Tuesday 12th February—Skipping workshops**

**We are having an issue with children being picked up late from school. Just a reminder that we have a school run after school club that runs until 5pm everyday.**

**If parents are consistently late to pick up their children, the children will be sent to this after school club located at our pre-school and parents will be charged for this time.**

## **FREE SCHOOL MEALS**

Have your circumstances changed? Could you now be entitled to Free School Meals?

To apply online please go to:

[www.iow.gov.uk/council/OtherServices/Free-School-Meals/Key-Stage-1-and-2](http://www.iow.gov.uk/council/OtherServices/Free-School-Meals/Key-Stage-1-and-2)

## **Medical Appointments & Leave of Absence Requests**

If your child has a hospital/dental appointment, please ensure you have notified the school office of the time and date and handed in a copy of the medical letter or appointment card.

Leave of absence request forms for holidays/ funerals etc. are available upon request at the school office.



We are a cashless school and only accept payments through Compass. Please contact the office if you need to set this up. Please use this service to pay for:

School dinners

After school clubs

Trips and visits

## **Free parking!**

Free parking permits are available from the school office for the local canoe lake car park.

We urge all parents that need to drive to and from school to use this service as parking around the school site is limited and our local residents still require access to their property at all times.

# School dinner menu

**AUTUMN/WINTER  
2025 MENU**

**WEEK 1**

W/C: 03/11/2025, 24/11/2025, 15/12/2025, 19/01/2026, 09/02/2026, 09/03/2026

		MONDAY	TUESDAY	WEDNESDAY	THURSDAY	FRIDAY
<b>HOT DISHES</b>	<b>OPTION 1</b>	Cheese and Tomato Pizza with Potato Wedges 🌱	Beef Bolognese with Wholewheat Pasta 🍷🍷	Roast Pork with Roast Potatoes and Gravy	Chinese Sticky Lemon Chicken with Wholegrain Rice 🍷🍷	Fish Fingers with Chips
	<b>OPTION 2</b>	BBQ Vegetable Wrap with Potato Wedges 🌱🍷	Vegetarian Bolognese with Wholewheat Pasta 🌱🍷🍷	Roast Quorn with Roast Potatoes and Gravy 🌱	Cheesy Vegetable Hotpot 🌱	Quorn Dippers with Chips 🌱
	<b>OPTION 3</b>	Tomato Pasta Fresh, homemade Tomato Sauce with Penne Pasta 🌱🍷	Tomato Pasta Fresh, homemade Tomato Sauce with Penne Pasta 🌱🍷	Tomato Pasta Fresh, homemade Tomato Sauce with Penne Pasta 🌱🍷	Tomato Pasta Fresh, homemade Tomato Sauce with Penne Pasta 🌱🍷	Tomato Pasta Fresh, homemade Tomato Sauce with Penne Pasta 🌱🍷
<b>HOT DISHES ARE SERVED WITH TWO VEGETABLES AND FRESHLY BAKED BREAD</b>						
<b>DELI</b>	<b>OPTION 4</b>	Ham, Cheese or Tuna Baguette with Mixed Salad 🌱	Ham, Cheese or Tuna Baguette with Mixed Salad 🌱	Ham, Cheese or Tuna Baguette with Mixed Salad 🌱	Ham, Cheese or Tuna Baguette with Mixed Salad 🌱	Ham, Cheese or Tuna Baguette with Mixed Salad 🌱
	<b>DELI DISHES ARE SERVED WITH MIXED SALAD</b>					
<b>DESSERT</b>		Crunchy Apple Slice 🌱	Strawberry Shortcake Mousse	Apple Crumble with Custard 🌱	Chocolate Ice Cream	Oat Cookie 🌱



**BAKED POTATOES SERVED DAILY**  
With a choice of toppings 🍷🍷



**AVAILABLE DAILY**  
Fresh fruit, salad, yoghurt and water

🌱 Vegetarian 🍷 Vegan 🍷 Oily Fish 🍷 Fruity! 🍷 Wholegrain 🍷 Nutritionist's Choice

Our menu is subject to change. Please be assured that all notified medical diets and allergy requirements will be safely catered for.

**Chartwells**  
Schools

WALL 10.2024

**AUTUMN/WINTER  
2025 MENU**

**WEEK 2**

W/C: 10/11/2025, 01/12/2025, 05/01/2026, 26/01/2026, 23/02/2026, 16/03/2026

		MONDAY	TUESDAY	WEDNESDAY	THURSDAY	FRIDAY
<b>HOT DISHES</b>	<b>OPTION 1</b>	Macaroni Cheese 🌱	Pork Sausages with Mashed Potatoes and Gravy	Roast Chicken with Roast Potatoes and Gravy	Chicken and Vegetable Korma with Wholegrain Rice 🍷🍷	Battered Fish with Chips
	<b>OPTION 2</b>	Veggie Burrito with Wholegrain Rice 🌱🍷🍷	Vegetarian Sausage with Mashed Potatoes and Gravy 🌱	Sweet Potato, Chickpea and Herb Roast with Roast Potatoes and Gravy 🌱🍷	Cheese and Tomato Pizza with Pasta Salad 🍷🌱	Quorn Dippers with Chips 🌱
	<b>OPTION 3</b>	Tomato Pasta Fresh, homemade Tomato Sauce with Penne Pasta 🌱🍷	Tomato Pasta Fresh, homemade Tomato Sauce with Penne Pasta 🌱🍷	Tomato Pasta Fresh, homemade Tomato Sauce with Penne Pasta 🌱🍷	Tomato Pasta Fresh, homemade Tomato Sauce with Penne Pasta 🌱🍷	Tomato Pasta Fresh, homemade Tomato Sauce with Penne Pasta 🌱🍷
<b>HOT DISHES ARE SERVED WITH TWO VEGETABLES AND FRESHLY BAKED BREAD</b>						
<b>DELI</b>	<b>OPTION 4</b>	Ham, Cheese or Tuna Baguette with Mixed Salad 🌱	Ham, Cheese or Tuna Baguette with Mixed Salad 🌱	Ham, Cheese or Tuna Baguette with Mixed Salad 🌱	Ham, Cheese or Tuna Baguette with Mixed Salad 🌱	Ham, Cheese or Tuna Baguette with Mixed Salad 🌱
	<b>DELI DISHES ARE SERVED WITH MIXED SALAD</b>					
<b>DESSERT</b>		Chocolate Caramel Crunch	Banana Flapjack 🌱🍷	Chocolate Brownie 🌱	Raspberry Jelly 🌱	Strawberry Ice Cream



**BAKED POTATOES SERVED DAILY**  
With a choice of toppings 🍷🍷



**AVAILABLE DAILY**  
Fresh fruit, salad, yoghurt and water

🌱 Vegetarian 🍷 Vegan 🍷 Oily Fish 🍷 Fruity! 🍷 Wholegrain 🍷 Nutritionist's Choice

Our menu is subject to change. Please be assured that all notified medical diets and allergy requirements will be safely catered for.

**Chartwells**  
Schools

WALL 10.2024

# School dinner menu

AUTUMN/WINTER 2025 MENU		WEEK 3				
		MONDAY	TUESDAY	WEDNESDAY	THURSDAY	FRIDAY
HOT DISHES	OPTION 1	Cheese and Tomato Pizza with Pasta Salad 🌱 🍷	Chicken and Broccoli Pasta Bake With Garlic Bread 🍷 🍷	Roast Gammon with Roast Potatoes and Gravy	BBQ Chicken with Rainbow Rice	Fish Fingers with Chips
	OPTION 2	Veggie Meat Feast Pizza with Pasta Salad 🌱 🍷	Macaroni Cheese 🌱	Vegetable Pastry Slice with Roast Potatoes and Gravy 🌱	Spanish Vegetable Rice 🍷 🌱	Quorn Dippers with Chips 🌱
	OPTION 3	Tomato Pasta Fresh, homemade Tomato Sauce with Penne Pasta 🌱 🍷	Tomato Pasta Fresh, homemade Tomato Sauce with Penne Pasta 🌱 🍷	Tomato Pasta Fresh, homemade Tomato Sauce with Penne Pasta 🌱 🍷	Tomato Pasta Fresh, homemade Tomato Sauce with Penne Pasta 🌱 🍷	Tomato Pasta Fresh, homemade Tomato Sauce with Penne Pasta 🌱 🍷
HOT DISHES ARE SERVED WITH TWO VEGETABLES AND FRESHLY BAKED BREAD						
DELI	OPTION 4	Ham, Cheese or Tuna Baguette with Mixed Salad 🌱	Ham, Cheese or Tuna Baguette with Mixed Salad 🌱	Ham, Cheese or Tuna Baguette with Mixed Salad 🌱	Ham, Cheese or Tuna Baguette with Mixed Salad 🌱	Ham, Cheese or Tuna Baguette with Mixed Salad 🌱
	DELI DISHES ARE SERVED WITH MIXED SALAD					
DESSERT		Chocolate Marble Cake 🌱	Apple Crumble with Custard 🌱	Lemon Cookie 🌱	Crunchy Chocolate Mousse	Strawberry Jelly 🌱

**BAKED POTATOES SERVED DAILY**  
With a choice of toppings 🍷 🍷

**AVAILABLE DAILY**  
Fresh fruit, salad, yoghurt and water

🌱 Vegetarian 🍷 Vegan 🍷 Oily Fish 🍷 Fruity! 🍷 Wholegrain 🍷 Nutritionist's Choice

Our menu is subject to change. Please be assured that all notified medical diets and allergy requirements will be safely catered for.

**Chartwells** Schools

## Are you entitled to free school meals?

If you receive any of the following, you can claim free school meals and the school can access additional funding too!

- Income support
- Income based jobseekers allowance
- Income-related employment and support allowance
- Guaranteed pension credit
- Support under part 5 of the immigration and asylum Act 1999
- Universal credit (with an annual net income of no more than £7,400)
- Child tax credit, provided the parent is not entitled to working tax credit and have an annual income, as assessed by HMRC, which does not exceed £16,190.
- Where a parent is entitled to working tax credit run-on (the payment someone receives for a further four weeks after they stop qualifying for working tax credit)

Registering for free school meals could raise an extra £1320 to fund valuable support like extra resources, additional teaching staff or after school activities. This is why it is so important to sign up!

We have forms to complete to make this happen, so please come and fill one in!

## St Mary's Catholic Primary School Uniform

### For all pupils:

Navy polo shirt with logo

Navy round neck sweatshirt

Navy cardigan

(Jumpers and Cardigans may be worn without a logo if wished. However, if you wish to you can purchase them from Kids and Co. with a logo or take the item bought elsewhere to Kids and Co. who for a small fee will add the school logo.)

Warm navy-blue tracksuit bottoms (not shiny or branded ones)

These items may be worn in warm weather but you always need to bring in the tracksuit bottoms so we can access the woods easily

Grey knee length skirt

Grey knee length pinafore

Grey shorts

Blue and white checked dress

White or grey socks / tights

Black shoes – the shoes need to be robust so that when the children are outside at lunch or break time as well as when outside learning their feet are supported. Ballet style shoes or ill-fitting shoes do not provide this support and should not be worn.

The shoes must be plain black with no decoration. They may be trainer styled shoes.

### PE Kit

School PE Logo top

Navy shorts/skorts

Plain black trainers (Please provide non-laced ones until your child is able to tie their own laces)

Navy tracksuit bottoms

Navy sweatshirt/hoody

### Hair

The children should wear their hair simply. This means no extreme haircuts including sculpting or shaved designs. No colour in hair. Hair bands and clips should be plain and small.

One small pair of earrings may be worn – if the child is not able to take them out they will be covered in tape during PE

**Temporary tattoos, make up, other jewellery, nail varnish and festival bands should not be worn at school.**

All uniform may be purchased from Kids and Co in Ryde - <https://www.kidsandcodirect.co.uk/>

Finally, please name all items. If you use pen to name the items, you will know that you need to write the name again several times throughout the year as it does wash out.



# School Development Days

Monday 1st September 2025

Tuesday 2nd September 2025

Monday 29th September 2025

Monday 5th January 2025

# Community News

## CHILDREN'S CHRISTMAS CELEBRATION

Tuesday, 23rd December -- 11am

St. Mary's Church, Ryde



A Service of Readings, Prayers, Poems, Carols  
and a reflection on the characters associated  
with the Nativity.

Do come along and celebrate  
the Christmas story in words, mime,  
song and meditation; and do please  
bring a small animal figure to present  
to the Christ child in the crib.



Everyone welcome, especially  
our children with their families

# Community News



At Picture News, we think it's important for everyone to use their voice and have a positive impact on the wider world. From getting involved with our community, to raising awareness for a special cause, each of us can bring light to others.

So this year, we'd love for you to do just that!

Light up the world by sharing a star containing a wish or act of kindness you think can make the world a better place.

If every school adds a star to the Christmas Star Map, just think of the positivity and joy we can create together over the festive season...

## How to get involved

### 1 Decide on your key wish or act of kindness

Think of something that can help light up the world, no matter how big or small.



Some ideas to help you get started

### 2 Complete the star template!

Be as creative as you like - why not include writing, drawing or painting to express your world wish or act of kindness?



### 3 Send us your star

Lots of schools are taking part this year, so be sure to share your stars with others!



### 4 Make a positive difference!

Act on your wish or act of kindness! How can you make a positive difference this festive period and beyond?



## How to share

Share your stars with us by the end of term, and help us create a huge Christmas Star Map! Look out for your stars featuring in our newspaper, and on the Picture News website and social media.



Email your stars to [help@picture-news.co.uk](mailto:help@picture-news.co.uk)



Post them on social media - remember to tag us! Include **#ChristmasStarMap** in your post.

# Community News



**Share your wish or act of kindness to light up the world!**



Send your stars to [help@picture-news.co.uk](mailto:help@picture-news.co.uk)  
Or share them on social media: X [@HelpPicture](#), Facebook & Instagram [@picturenewsprimary](#)

# Community News



Sandown Soccer - Isle of Wight



## SANDOWN SOCCER

at The Bay CE Secondary

**FOR CHILDREN AGED 5-11**

**XMAS WORLD CUP DAYS!**  
**22<sup>nd</sup> and 23<sup>rd</sup> December**

Mini-Soccer camp for children. Aiming to provide a **fun** and **enjoyable** environment whilst **developing** and **improving** players footballing ability!

**10AM - 3PM**

- ★ FA Qualified coaches with enhanced DBS and up to date first aid and safeguarding training.
- ★ Fun football games to develop agility, balance, coordination and speed!
- ★ Take part in the Sandown Soccer World Cup where one team will be crowned **WORLD CHAMPIONS!!!**

**Text your child's name and year group to 07594389531 to secure your place today!**

# Community News



## Family Friendly Festive Weekend at the Isle of Wight Donkey Sanctuary - Saturday 20 and Sunday 21 December

Celebrate Christmas with magical, affordable fun at the Isle of Wight Donkey Sanctuary! Meet over 100 donkeys and ponies and enjoy a unique Santa's Grotto experience inside our barn.

Find out more on the [Isle of Wight Donkey Sanctuary website](#)

### Santa's Grotto

Come and meet Santa in his festive grotto, all weekend from 10.30am to 3pm. He'll be with his elves and our donkeys for a very special Christmas experience. From £5 per child (includes a festive goodie bag).

[Book online](#) or book in on the day (subject to availability)

New for 2025: **Quiet Time with Santa** on Saturday 20 December, 10.00 to 10.30am.

If your child would love to meet Santa but would prefer a calmer, more relaxed experience, this session is just for them.

From £5 per person, including a festive goodie bag.

Spaces are limited and must be [booked in advance online](#).

Other activities on over our Festive Weekend include:

- Pony & carriage rides - £5 per person (weather dependant)
- Free reindeer trail – search for the reindeers hidden around our site – everyone gets a sweet treat!
- Seasonal music in the barn
- Mulled wine and festive treats in our café
- Christmas shopping ideas
- Isle of Wight Gin Company tasting – mums, dads and grandparents only!

Find out more on the [Isle of Wight Donkey Sanctuary website](#).



# Community News

## Portraits by Fleur

Kenbury Hotel, Shanklin



Calling all children (age 6 and above), mums, dads, carers and grandparents! Learn to draw and paint realistically with pastels in an informal and fun class with step by step tuition.

All abilities welcome. All equipment provided.



Monday 29th  
December and  
Tuesday 30th  
December

2.30-4pm (ish)

Total for both  
sessions per child

**£28.50**

Joining your child  
to paint? **£50** for  
both of you

**Contact**  
**portraitsbyfleur**  
**07875150810**  
vouchers available

**Adults must be  
accompanied by a  
child!**

Both dates must be attended to complete your painting. Early booking essential as spaces limited. Frames for your artwork available to purchase subject to availability and completely optional. Refunds are unavailable. On site parking is limited.

# Community News

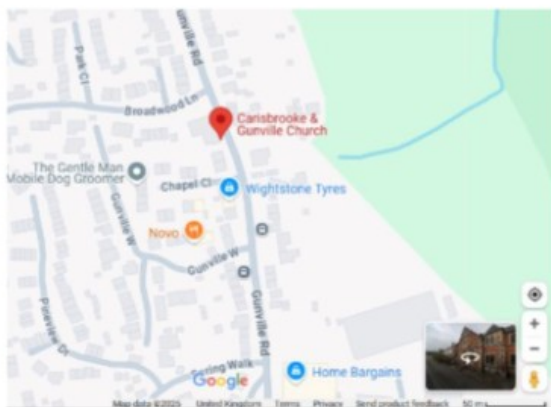
Isle of Wight  
**Neurodiversity**  
Team



## Parent and Caregiver Peer Support Sessions

Where: Gunville Methodist Church Hall

When:



11<sup>th</sup> September 2025 (10am - 12 noon)

6<sup>th</sup> November 2025 (10am - 12 noon)

15<sup>th</sup> January 2026 (10am - 11am)

5<sup>th</sup> March 2026 (10am - 12 noon)

7<sup>th</sup> May 2026 (10am - 12 noon)

Come along to meet with other parents / caregivers for an informal meet up and chat about your journey. Refreshments provided. No need to book, just turn up. Free onsite parking.

### BEE NETBALL BUZZERS AGE 5-7 & FLIERS AGE 7-9 IOW RYDE ACADEMY

**TUESDAYS**  
5.30pm-6.30pm

**Contact:**  
Chris on 07969  
504734 or  
cmg1504@gmail.  
com

**Contact:** [carey.mccormick@englandnetball.co.uk](mailto:carey.mccormick@englandnetball.co.uk)

**EN** ENGLAND  
NETBALL  
SOUTH

# Community News



17<sup>th</sup> November 2025

Dear Parents / Carers

Isle of Wight Council invites eligible families to sign up for free activities this Christmas as part of the Holiday Activities and Food (HAF) Programme.

The programme is funded by the Department for Education so that we can offer healthy food and enriching activities in the school holidays to children who receive income-based free school meals. To check your eligibility please see the following webpage: <https://www.iow.gov.uk/schools-and-education/schools/free-school-meals/>

A small number of places are also available on a discretionary basis : please click the following link to see if you are eligible <https://www.iow.gov.uk/children-and-family-support/holiday-activities-and-childcare/holiday-activities/holiday-activities-and-food-programme-haf/>

The Christmas Programme is packed full of exciting activities across the Island. All activities can be booked on our HAF booking System - please follow the QR Code or Link below.



<https://eequ.org/hafontheisleofwight>

If your first choice is fully booked, we would encourage you to check other HAF activities or leave your details on a waiting list as there are often cancellations.

Please see below for details of the holiday activities available this Christmas:

Activity Provider	Venue	Type of Activity
Aspire Ryde	Soft Play, Aspire Ryde, Dover Street, Ryde, PO33 2BN	Soft play, crafts and group activities for the family
	Creative Hub, Aspire Ryde, Dover Street, Ryde, PO33 2BN	Music, crafts and digital <a href="#">media based</a> activity
	Creative Hub, Young Persons & Family Centre, <del>Sibden</del> Road, Shanklin, PO37 7LY	Music, crafts and digital <a href="#">media based</a> activity
CM Sports	Barton Primary School, Furlongs, Newport, PO30 2AX	Multi-Activity Club including sports, crafts and group games
Connect IOW	Connect Centre, 7 Bowling Green Lane, Newport, PO30 1RR	Specialist SEND Activity

# Community News

Easel Peasels	Goose Island, Fakenham Farm Eddington Rd, Ryde, PO33 1XS	Art based activity including bubble slime
Football Fun Factory	The Bay CE Secondary Site Sports Hall, The Fairway, Sandown, PO36 9JH	Football based activity including inflatables
The Holt	136 Pyle Street, Newport, PO30 1JW	Specialist SEND Activity
Island Riding Centre	Island Riding Centre, Staplers Road, Newport, PO30 2NB	Horse riding activity including horse care and yard/stable maintenance
John Cattle's Skate Club	St Marks Church, Wootton, PO33 4RA	Skateboarding and additional crafts
LJR Coaching	Broadlea Primary School, Newport Road, Sandown, PO36 9PE Lanesend Primary School, Love Lane, Cowes, PO31 7ES St Mary's Primary School, 2 Amphill Road, Ryde, PO33 1LJ East Cowes Vics FC, Beatrice Avenue, East Cowes, PO32 6PA	World Cup football days and multi sports coaching days
Premier School Sports Coaching (PSSC)	Barton Primary School, Furlongs, Newport, PO30 2AX Dover Park Primary School, Dover Street, Ryde PO33 2BN St Francis Catholic and Church of England Primary Academy, Newport Road, Ventnor, PO38 1BQ	Multi sports coaching including cheerleading days
IOW Rare Breeds (including specialist SEND activity days)	Isle of Wight Rare Breeds, Oaklea Farm, Alverstone, PO36 0EX	Family farm-based activities including meeting animals, scavenger hunts and crafts (includes Specialist SEND Activity)
The Starlight Academy	Unit 8 Barry Way, Newport Business Park, Newport, PO30 5GY	Mix of dance, aerial, acrobatics and cheerleading, themed around the circus
Fun Club - West Wight Nursery	West Wight Nursery, Summers Lane, Totland, PO39 0HQ	Multi-Activity Club including drama llama

You can use the following link [IW Family Information Hub \(HAF\) \(iow.gov.uk\)](https://www.iow.gov.uk) to search for activities and contact local providers directly or access this webpage using the QR code below.

To find out more about the HAF Programme visit the [Holiday Activities webpages](#). For queries, **please email [holidayactivities@iow.gov.uk](mailto:holidayactivities@iow.gov.uk) in the first instance.**

Kind regards

# Community News



Family Assist  
Solent



Hampshire and  
Isle of Wight Healthcare  
NHS Foundation Trust

## Helping to keep your child healthy

The Isle of Wight 0-19 Team is made up of Health Visitors, School Nurses, Community Nurses, Associate Practitioners and Administrators.

We use our skill mix team to ensure that all families are offered mandated health contacts for needs assessment, advice and support.

**Please see Family Assist for additional support information.**



If you have any questions or would like to speak to a Health Visitor or School Nurse, please ring the 0-19 duty desk on **0300 123 5224**



# Community News



## FREE GIRLS CRICKET TRAINING

SUNDAYS

Starting Sunday 9th November

AT  
THE BAY SPORTS HALL  
3-4PM (U11 GIRLS)  
4-5PM (U13/U15 GIRLS)



IF YOU'D LIKE TO COME ALONG TO THESE SESSIONS  
PLEASE CONTACT KIM 07368937817

# Community News

## LIGHT UP IOW YOUTH THEATRE



## BEGINNERS CLASS RYDE

### WHAT CAN YOU EXPECT?

- DRAMA GAMES
- IMPROVISATION AND CHARACTER WORK
- MAKE NEW FRIENDS
- LOTS OF CREATIVE FUN

IDEAL FOR ANYONE WANTING  
TO TRY DRAMA OR  
DEVELOP THEIR DRAMA SKILLS



Starting Tuesday  
11<sup>th</sup> November  
Weekly 6pm-7pm  
Ages: 6+  
@Department  
£6 per class



Scan the QR code to book  
a free trial

Email: [donna@lightupdrama.org.uk](mailto:donna@lightupdrama.org.uk) for more information