



ST MARY'S Catholic Primary School Newsletter



12th December 2025

St Mary's Catholic Primary School, Amphill Road, Ryde, Isle of Wight. PO33 1LJ 01983 562000 www.stmaryspri.co.uk

Celebration of the word

This week, we will learn about Matthew 3:1-12, John the Baptist telling people to get ready for Jesus by changing their hearts and lives. He preached in the wilderness, wore camel's hair and leather, and ate locusts and honey. John baptized people in the Jordan River to show they were sorry for their sins. He told people to "do good things" to show they were sorry and warned that God would judge those who didn't listen. He also explained that Jesus, who was more powerful than him, would baptize people with the Holy Spirit and fire, just like a farmer separates good grain from the "chaff" (trash) to put the wheat in a barn while burning the chaff

Dear families,

This week we have loved inviting parents in to discuss each child's progress and success. Thank you for working with us to ensure that both home and school have high expectations of what our pupils can achieve and celebrate the importance of learning. I hope you found these meeting valuable.

From tomorrow, class dojo will be closed for St Mary's and compass will be our main form of communication. This is to streamline how we communicate with you so you all receive the most up to date information. Please make sure you have the compass app and that you know how to send messages to us through it.

I would like to remind parents that communication is very important to us and we welcome your views, thoughts and worries so we can support you as best as we can. With this mind, please can you ensure that you do not use AI to write messages to us. Hearing your voice is much more important than using more formal language or trying to write in a professional way.

Next week will be a very busy week in school! EYFS and KS1 have their Nativity performances and KS2 have their carol service at the church on Wednesday evening. We hope to see as many of you there as possible to support the children at this special time of year.

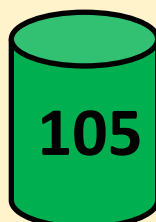
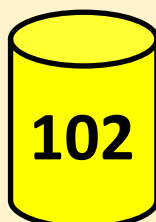
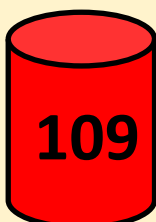
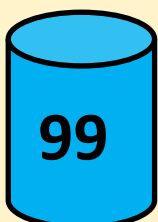
Just a reminder that during this season there are a lot of coughs and colds appearing which is affecting our attendance. If your child is ok to attend school please send them in and we will look after them! Every minute counts and at the minute our attendance needs to improve.

Have a wonderful weekend.

Mrs Broome

House Point Totals

Well done to **St Josephine's house** who were the winning house this week!



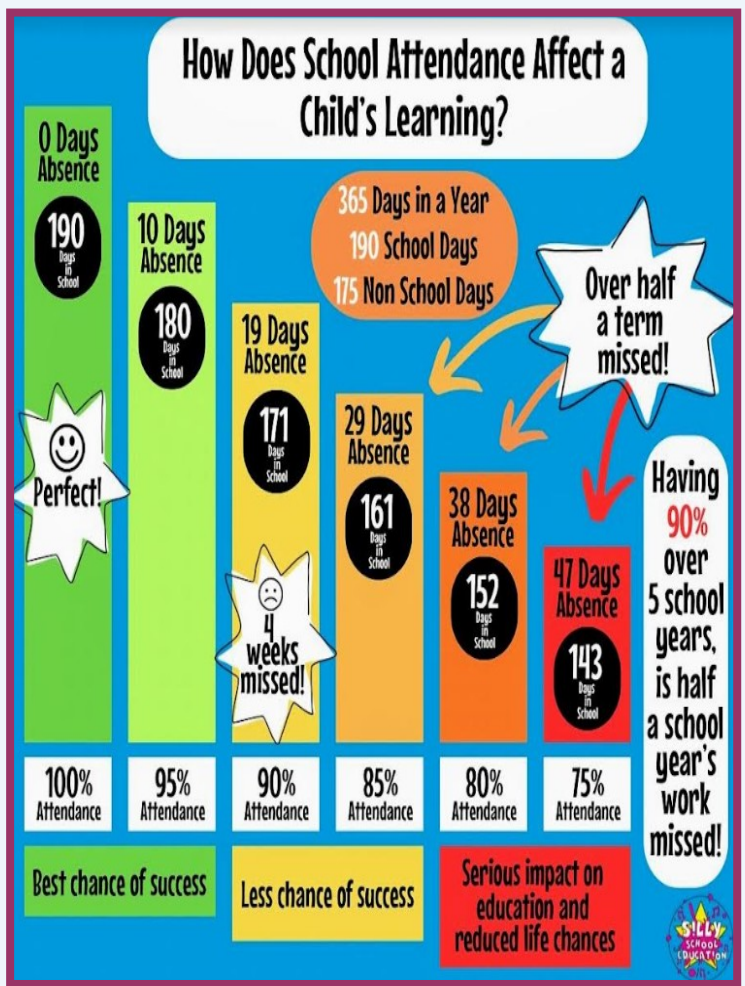
Our School Lottery

Support our school and
buy your chance to win
here -

[https://
www.yourschoollottery.co.uk/
lottery/school/st-marys-
catholic-primary-school.](https://www.yourschoollottery.co.uk/lottery/school/st-marys-catholic-primary-school)

LIVE LOVE BELIEVE

PHYSICAL EDUCATION	AUTUMN 1 2025	
	MONDAY	YEAR TWO
	TUESDAY	YEAR THREE & EYFS
	WEDNESDAY	YEAR ONE & FIVE
	THURSDAY	YEAR FOUR & SIX
	FRIDAY	EYFS & YEAR ONE



Attendance and Lateness

School target 96%

This weeks whole school attendance **91.9%**

Unfortunately our system is down so there isn't any available data this week.

- EYFS = 96.8% **5 lates**
- Year 1 = **84%** **2 lates**
- Year 2 = **90%** **2 lates**
- Year 3 = **88.4%** **6 lates**
- Year 4 = **91.5%** **1 lates**
- Year 5 = **95.2%** **3 lates**
- Year 6 = **96.6%** **4 lates**

Well done Year 6 Great work!

Diary Dates 25-26

NEW DATES WILL BE ADDED IN RED

Wednesday 10th December—whole school mass—parents invited

Monday 8th December - EYFS/KS1 Nativity performance (PM)

Tuesday 9th December - EYFS/KS1 Nativity performance (PM)

Wednesday 10th December—KS2 singing at the church.

Tuesday 16th December—Christmas dinner day

We are having an issue with children being picked up late from school. Just a reminder that we have a school run after school club that runs until 5pm everyday.

If parents are consistently late to pick up their children, the children will be sent to this after school club located at our pre-school and parents will be charged for this time.

FREE SCHOOL MEALS

Have your circumstances changed? Could you now be entitled to Free School Meals?

To apply online please go to:

www.iow.gov.uk/council/OtherServices/Free-School-Meals/Key-Stage-1-and-2

Medical Appointments & Leave of Absence Requests

If your child has a hospital/dental appointment, please ensure you have notified the school office of the time and date and handed in a copy of the medical letter or appointment card.

Leave of absence request forms for holidays/funerals etc. are available upon request at the school office.



We are a cashless school and only accept payments through Compass. Please contact the office if you need to set this up. Please use this service to pay for:

School dinners

After school clubs

Trips and visits

Free parking!

Free parking permits are available from the school office for the local canoe lake car park.

We urge all parents that need to drive to and from school to use this service as parking around the school site is limited and our local residents still require access to their property at all times.

School dinner menu

**AUTUMN/WINTER
2025 MENU**

WEEK 1

W/C: 03/11/2025, 24/11/2025, 15/12/2025, 19/01/2026, 09/02/2026, 09/03/2026

		MONDAY	TUESDAY	WEDNESDAY	THURSDAY	FRIDAY
HOT DISHES	OPTION 1	Cheese and Tomato Pizza with Potato Wedges 🌱	Beef Bolognese with Wholewheat Pasta 🍷🍗	Roast Pork with Roast Potatoes and Gravy	Chinese Sticky Lemon Chicken with Wholegrain Rice 🍷🍗	Fish Fingers with Chips
	OPTION 2	BBQ Vegetable Wrap with Potato Wedges 🌱🍗	Vegetarian Bolognese with Wholewheat Pasta 🌱🍗	Roast Quorn with Roast Potatoes and Gravy 🌱	Cheesy Vegetable Hotpot 🌱	Quorn Dippers with Chips 🌱
	OPTION 3	Tomato Pasta Fresh, homemade Tomato Sauce with Penne Pasta 🌱🍗	Tomato Pasta Fresh, homemade Tomato Sauce with Penne Pasta 🌱🍗	Tomato Pasta Fresh, homemade Tomato Sauce with Penne Pasta 🌱🍗	Tomato Pasta Fresh, homemade Tomato Sauce with Penne Pasta 🌱🍗	Tomato Pasta Fresh, homemade Tomato Sauce with Penne Pasta 🌱🍗
HOT DISHES ARE SERVED WITH TWO VEGETABLES AND FRESHLY BAKED BREAD						
DELI	OPTION 4	Ham, Cheese or Tuna Baguette with Mixed Salad 🌱	Ham, Cheese or Tuna Baguette with Mixed Salad 🌱	Ham, Cheese or Tuna Baguette with Mixed Salad 🌱	Ham, Cheese or Tuna Baguette with Mixed Salad 🌱	Ham, Cheese or Tuna Baguette with Mixed Salad 🌱
	DELI DISHES ARE SERVED WITH MIXED SALAD					
DESSERT		Crunchy Apple Slice 🌱	Strawberry Shortcake Mousse	Apple Crumble with Custard 🌱	Chocolate Ice Cream	Oat Cookie 🌱



BAKED POTATOES SERVED DAILY
With a choice of toppings 🍷🍗



AVAILABLE DAILY
Fresh fruit, salad, yoghurt and water

🌱 Vegetarian 🍷 Vegan 🍗 Oily Fish 🍗 Fruity! 🍷 Wholegrain 🍷 Nutritionist's Choice

Our menu is subject to change. Please be assured that all notified medical diets and allergy requirements will be safely catered for.

Chartwells
Schools

WALL 10.2024

**AUTUMN/WINTER
2025 MENU**

WEEK 2

W/C: 10/11/2025, 01/12/2025, 05/01/2026, 26/01/2026, 23/02/2026, 16/03/2026

		MONDAY	TUESDAY	WEDNESDAY	THURSDAY	FRIDAY
HOT DISHES	OPTION 1	Macaroni Cheese 🌱	Pork Sausages with Mashed Potatoes and Gravy	Roast Chicken with Roast Potatoes and Gravy	Chicken and Vegetable Korma with Wholegrain Rice 🍷🍗	Battered Fish with Chips
	OPTION 2	Veggie Burrito with Wholegrain Rice 🌱🍗	Vegetarian Sausage with Mashed Potatoes and Gravy 🌱	Sweet Potato, Chickpea and Herb Roast with Roast Potatoes and Gravy 🌱🍗	Cheese and Tomato Pizza with Pasta Salad 🍷🌱	Quorn Dippers with Chips 🌱
	OPTION 3	Tomato Pasta Fresh, homemade Tomato Sauce with Penne Pasta 🌱🍗	Tomato Pasta Fresh, homemade Tomato Sauce with Penne Pasta 🌱🍗	Tomato Pasta Fresh, homemade Tomato Sauce with Penne Pasta 🌱🍗	Tomato Pasta Fresh, homemade Tomato Sauce with Penne Pasta 🌱🍗	Tomato Pasta Fresh, homemade Tomato Sauce with Penne Pasta 🌱🍗
HOT DISHES ARE SERVED WITH TWO VEGETABLES AND FRESHLY BAKED BREAD						
DELI	OPTION 4	Ham, Cheese or Tuna Baguette with Mixed Salad 🌱	Ham, Cheese or Tuna Baguette with Mixed Salad 🌱	Ham, Cheese or Tuna Baguette with Mixed Salad 🌱	Ham, Cheese or Tuna Baguette with Mixed Salad 🌱	Ham, Cheese or Tuna Baguette with Mixed Salad 🌱
	DELI DISHES ARE SERVED WITH MIXED SALAD					
DESSERT		Chocolate Caramel Crunch	Banana Flapjack 🌱🍗	Chocolate Brownie 🌱	Raspberry Jelly 🌱	Strawberry Ice Cream



BAKED POTATOES SERVED DAILY
With a choice of toppings 🍷🍗



AVAILABLE DAILY
Fresh fruit, salad, yoghurt and water

🌱 Vegetarian 🍷 Vegan 🍗 Oily Fish 🍗 Fruity! 🍷 Wholegrain 🍷 Nutritionist's Choice

Our menu is subject to change. Please be assured that all notified medical diets and allergy requirements will be safely catered for.

Chartwells
Schools

WALL 10.2024

School dinner menu

AUTUMN/WINTER 2025 MENU		WEEK 3				
		MONDAY	TUESDAY	WEDNESDAY	THURSDAY	FRIDAY
HOT DISHES	OPTION 1	Cheese and Tomato Pizza with Pasta Salad 🌱 🌱	Chicken and Broccoli Pasta Bake With Garlic Bread 🍷 🌱	Roast Gammon with Roast Potatoes and Gravy	BBQ Chicken with Rainbow Rice	Fish Fingers with Chips
	OPTION 2	Veggie Meat Feast Pizza with Pasta Salad 🌱 🌱	Macaroni Cheese 🌱	Vegetable Pastry Slice with Roast Potatoes and Gravy 🌱	Spanish Vegetable Rice 🍷 🌱	Quorn Dippers with Chips 🌱
	OPTION 3	Tomato Pasta Fresh, homemade Tomato Sauce with Penne Pasta 🌱 🌱	Tomato Pasta Fresh, homemade Tomato Sauce with Penne Pasta 🌱 🌱	Tomato Pasta Fresh, homemade Tomato Sauce with Penne Pasta 🌱 🌱	Tomato Pasta Fresh, homemade Tomato Sauce with Penne Pasta 🌱 🌱	Tomato Pasta Fresh, homemade Tomato Sauce with Penne Pasta 🌱 🌱
HOT DISHES ARE SERVED WITH TWO VEGETABLES AND FRESHLY BAKED BREAD						
DELI	OPTION 4	Ham, Cheese or Tuna Baguette with Mixed Salad 🌱	Ham, Cheese or Tuna Baguette with Mixed Salad 🌱	Ham, Cheese or Tuna Baguette with Mixed Salad 🌱	Ham, Cheese or Tuna Baguette with Mixed Salad 🌱	Ham, Cheese or Tuna Baguette with Mixed Salad 🌱
	DELI DISHES ARE SERVED WITH MIXED SALAD					
DESSERT		Chocolate Marble Cake 🌱	Apple Crumble with Custard 🌱	Lemon Cookie 🌱	Crunchy Chocolate Mousse	Strawberry Jelly 🌱

BAKED POTATOES SERVED DAILY
With a choice of toppings 🍷 🌱

AVAILABLE DAILY
Fresh fruit, salad, yoghurt and water

🌱 Vegetarian 🌱 Vegan 🍷 Oily Fish 🌱 Fruity! 🌱 Wholegrain 🍷 Nutritionist's Choice

Our menu is subject to change. Please be assured that all notified medical diets and allergy requirements will be safely catered for.

Chartwells Schools

Menu 18.2024

Are you entitled to free school meals?

If you receive any of the following, you can claim free school meals and the school can access additional funding too!

- Income support
- Income based jobseekers allowance
- Income-related employment and support allowance
- Guaranteed pension credit
- Support under part 5 of the immigration and asylum Act 1999
- Universal credit (with an annual net income of no more than £7,400)
- Child tax credit, provided the parent is not entitled to working tax credit and have an annual income, as assessed by HMRC, which does not exceed £16,190.
- Where a parent is entitled to working tax credit run-on (the payment someone receives for a further four weeks after they stop qualifying for working tax credit)

Registering for free school meals could raise an extra £1320 to fund valuable support like extra resources, additional teaching staff or after school activities. This is why it is so important to sign up!

We have forms to complete to make this happen, so please come and fill one in!

St Mary's Catholic Primary School Uniform

For all pupils:

Navy polo shirt with logo

Navy round neck sweatshirt

Navy cardigan

(Jumpers and Cardigans may be worn without a logo if wished. However, if you wish to you can purchase them from Kids and Co. with a logo or take the item bought elsewhere to Kids and Co. who for a small fee will add the school logo.)

Warm navy-blue tracksuit bottoms (not shiny or branded ones)

These items may be worn in warm weather but you always need to bring in the tracksuit bottoms so we can access the woods easily

Grey knee length skirt

Grey knee length pinafore

Grey shorts

Blue and white checked dress

White or grey socks / tights

Black shoes – the shoes need to be robust so that when the children are outside at lunch or break time as well as when outside learning their feet are supported. Ballet style shoes or ill-fitting shoes do not provide this support and should not be worn.

The shoes must be plain black with no decoration. They may be trainer styled shoes.

PE Kit

School PE Logo top

Navy shorts/skorts

Plain black trainers (Please provide non-laced ones until your child is able to tie their own laces)

Navy tracksuit bottoms

Navy sweatshirt/hoody

Hair

The children should wear their hair simply. This means no extreme haircuts including sculpting or shaved designs. No colour in hair. Hair bands and clips should be plain and small.

One small pair of earrings may be worn – if the child is not able to take them out they will be covered in tape during PE

Temporary tattoos, make up, other jewellery, nail varnish and festival bands should not be worn at school.

All uniform may be purchased from Kids and Co in Ryde - <https://www.kidsandcodirect.co.uk/>

Finally, please name all items. If you use pen to name the items, you will know that you need to write the name again several times throughout the year as it does wash out.



School Development Days

Monday 1st September 2025

Tuesday 2nd September 2025

Monday 29th September 2025

Monday 5th January 2025

Community News

CHILDREN'S CHRISTMAS CELEBRATION

Tuesday, 23rd December -- 11am

St. Mary's Church, Ryde



A Service of Readings, Prayers, Poems, Carols
and a reflection on the characters associated
with the Nativity.

Do come along and celebrate
the Christmas story in words, mime,
song and meditation; and do please
bring a small animal figure to present
to the Christ child in the crib.



Everyone welcome, especially
our children with their families

Community News

Portraits by Fleur

Kenbury Hotel, Shanklin



Calling all children (age 6 and above), mums, dads, carers and grandparents! Learn to draw and paint realistically with pastels in an informal and fun class with step by step tuition.

All abilities welcome. All equipment provided.



Monday 29th
December and
Tuesday 30th
December

2.30-4pm (ish)

Total for both
sessions per child

£28.50

Joining your child
to paint? **£50** for
both of you

Contact
portraitsbyfleur
07875150810
vouchers available

**Adults must be
accompanied by a
child!**

Both dates must be attended to complete your painting. Early booking essential as spaces limited. Frames for your artwork available to purchase subject to availability and completely optional. Refunds are unavailable. On site parking is limited.

Community News

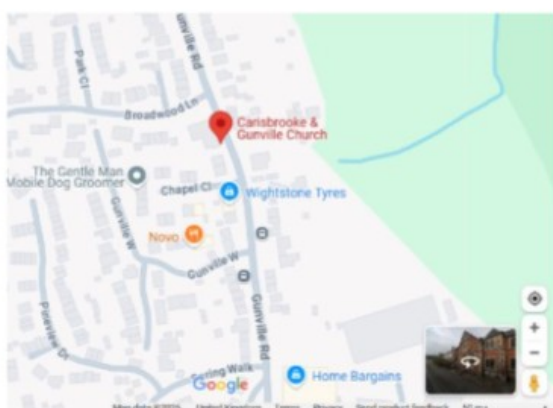
Isle of Wight
Neurodiversity
Team



Parent and Caregiver Peer Support Sessions

Where: Gunville Methodist Church Hall

When:



11th September 2025 (10am - 12 noon)

6th November 2025 (10am - 12 noon)

15th January 2026 (10am - 11am)

5th March 2026 (10am - 12 noon)

7th May 2026 (10am - 12 noon)

Come along to meet with other parents / caregivers for an informal meet up and chat about your journey. Refreshments provided. No need to book, just turn up. Free onsite parking.



Bee Netball

**BEE NETBALL BUZZERS
AGE 5-7 & FLIERS AGE 7-9
IOW RYDE ACADEMY**

**TUESDAYS
5.30pm-6.30pm**



Contact:
Chris on 07969
504734 or
cmg1504@gmail.
com



EN ENGLAND
NETBALL
SOUTH

Contact: carey.mccormick@englandnetball.co.uk

Community News



17th November 2025

Dear Parents / Carers

Isle of Wight Council invites eligible families to sign up for free activities this Christmas as part of the Holiday Activities and Food (HAF) Programme.

The programme is funded by the Department for Education so that we can offer healthy food and enriching activities in the school holidays to children who receive income-based free school meals. To check your eligibility please see the following webpage: <https://www.iow.gov.uk/schools-and-education/schools/free-school-meals/>

A small number of places are also available on a discretionary basis : please click the following link to see if you are eligible <https://www.iow.gov.uk/children-and-family-support/holiday-activities-and-childcare/holiday-activities/holiday-activities-and-food-programme-haf/>

The Christmas Programme is packed full of exciting activities across the Island. All activities can be booked on our HAF booking System - please follow the QR Code or Link below.



<https://eequ.org/hafontheisleofwight>

If your first choice is fully booked, we would encourage you to check other HAF activities or leave your details on a waiting list as there are often cancellations.

Please see below for details of the holiday activities available this Christmas:

Activity Provider	Venue	Type of Activity
Aspire Ryde	Soft Play, Aspire Ryde, Dover Street, Ryde, PO33 2BN	Soft play, crafts and group activities for the family
	Creative Hub, Aspire Ryde, Dover Street, Ryde, PO33 2BN	Music, crafts and digital media based activity
	Creative Hub, Young Persons & Family Centre, Sibden Road, Shanklin, PO37 7LY	Music, crafts and digital media based activity
CM Sports	Barton Primary School, Furlongs, Newport, PO30 2AX	Multi-Activity Club including sports, crafts and group games
Connect IOW	Connect Centre, 7 Bowling Green Lane, Newport, PO30 1RR	Specialist SEND Activity

Community News

Easel Peasels	Goose Island, Fakenham Farm Eddington Rd, Ryde, PO33 1XS	Art based activity including bubble slime
Football Fun Factory	The Bay CE Secondary Site Sports Hall, The Fairway, Sandown, PO36 9JH	Football based activity including inflatables
The Holt	136 Pyle Street, Newport, PO30 1JW	Specialist SEND Activity
Island Riding Centre	Island Riding Centre, Staplers Road, Newport, PO30 2NB	Horse riding activity including horse care and yard/stable maintenance
John Cattle's Skate Club	St Marks Church, Wootton, PO33 4RA	Skateboarding and additional crafts
LJR Coaching	Broadlea Primary School, Newport Road, Sandown, PO36 9PE Lanesend Primary School, Love Lane, Cowes, PO31 7ES St Mary's Primary School, 2 Amphill Road, Ryde, PO33 1LJ East Cowes Vics FC, Beatrice Avenue, East Cowes, PO32 6PA	World Cup football days and multi sports coaching days
Premier School Sports Coaching (PSSC)	Barton Primary School, Furlongs, Newport, PO30 2AX Dover Park Primary School, Dover Street, Ryde PO33 2BN St Francis Catholic and Church of England Primary Academy, Newport Road, Ventnor, PO38 1BQ	Multi sports coaching including cheerleading days
IOW Rare Breeds (including specialist SEND activity days)	Isle of Wight Rare Breeds, Oaklea Farm, Alverstone, PO36 0EX	Family farm-based activities including meeting animals, scavenger hunts and crafts (includes Specialist SEND Activity)
The Starlight Academy	Unit 8 Barry Way, Newport Business Park, Newport, PO30 5GY	Mix of dance, aerial, acrobatics and cheerleading, themed around the circus
Fun Club - West Wight Nursery	West Wight Nursery, Summers Lane, Totland, PO39 0HQ	Multi-Activity Club including drama llama

You can use the following link [IW Family Information Hub \(HAF\) \(iow.gov.uk\)](https://www.iow.gov.uk) to search for activities and contact local providers directly or access this webpage using the QR code below.

To find out more about the HAF Programme visit the [Holiday Activities webpages](#). For queries, **please email holidayactivities@iow.gov.uk in the first instance.**

Kind regards

Community News



Family Assist
Solent



Hampshire and
Isle of Wight Healthcare
NHS Foundation Trust

Helping to keep your child healthy

The Isle of Wight 0-19 Team is made up of Health Visitors, School Nurses, Community Nurses, Associate Practitioners and Administrators.

We use our skill mix team to ensure that all families are offered mandated health contacts for needs assessment, advice and support.

Please see Family Assist for additional support information.



If you have any questions or would like to speak to a Health Visitor or School Nurse, please ring the 0-19 duty desk on **0300 123 5224**



Community News

Christmas Drive-in Cinema 2025

Robin Hill Country Park

Friday 12 December

The Muppet Christmas
Carol | 6:30pm

Die Hard | 9pm

Saturday 13 December

Elf | Midday

Home Alone | 3pm

Love Actually | 7pm

Sunday 14 December

The Polar Express | Midday

How The Grinch Stole
Christmas | 3pm

The Holiday | 7pm

Book now



Scan the
QR code
or visit:

[wessexcancer.org.uk/
Cinema2025](https://wessexcancer.org.uk/Cinema2025)



Sponsored by



WHITE
INDOVS



The Isle of Wight
College
Your Future Starts Here



wessexcancer.org.uk

Wessex Cancer Support is a registered charity in England and Wales (1110216)

Screenings subject to film licences and weather



Community News



FREE GIRLS CRICKET TRAINING SUNDAYS

Starting Sunday 9th November

**AT
THE BAY SPORTS HALL
3-4PM (U11 GIRLS)
4-5PM (U13/U15 GIRLS)**



**IF YOU'D LIKE TO COME ALONG TO THESE SESSIONS
PLEASE CONTACT KIM 07368937817**

Community News

LIGHT UP IOW YOUTH THEATRE



BEGINNERS CLASS RYDE

WHAT CAN YOU EXPECT?

- DRAMA GAMES
- IMPROVISATION AND CHARACTER WORK
- MAKE NEW FRIENDS
- LOTS OF CREATIVE FUN

IDEAL FOR ANYONE WANTING
TO TRY DRAMA OR
DEVELOP THEIR DRAMA SKILLS



Starting Tuesday
11th November
Weekly 6pm-7pm
Ages: 6+
@Department
£6 per class



Scan the QR code to book
a free trial

Email: donna@lightupdrama.org.uk for more information