



ST MARY'S Catholic Primary School Newsletter



21st May 2026

St Mary's Catholic Primary School, Amphill Road, Ryde, Isle of Wight. PO33 1LJ 01983 562000 www.stmaryspri.co.uk

Celebration of the word

This week, we have learned about the gospel of John 20:19-23, that records the first appearance of the resurrected Jesus Christ to his assembled disciples on the evening of Resurrection Sunday. In this pivotal passage, Jesus miraculously enters a locked room, transforms his followers' fear into joy, commissions them for their global mission, and bestows the Holy Spirit.

Dear families,

I can't believe this is our last day of the Summer 1 term! We have had so many wonderful things happen this term, sailing, swimming, theatre trips and residential have all been a roaring success.

Thank you to everyone who has supported St Mary's this year with homework and uniform expectations. For summer 2 we still want children to adhere to these and ensure they are ready for learning everyday.

Please see our leaflet for the after school clubs that are running after half term and make sure you sign your children up to these brilliant clubs.

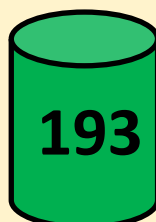
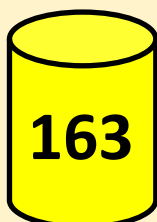
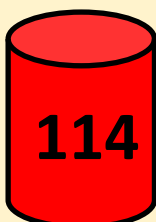
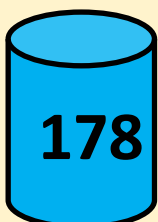
Summer 2 will be a very busy one, so please make sure you have the compass app up to date so you don't miss any important announcements.

Have a wonderful half term!

Mrs Broome

House Point Totals

Well done to **St Martin's house** who were the winning house this week!



Our School Lottery

Support our school and
buy your chance to win
here -

[https://
www.yourschoollottery.co.uk/
lottery/school/st-marys-
catholic-primary-school.](https://www.yourschoollottery.co.uk/lottery/school/st-marys-catholic-primary-school)

LIVE LOVE BELIEVE

Attendance and Lateness

School target 96%

This weeks whole school attendance **93.23%**

EYFS = **94.17%** 4 lates

Year 1 = **81.67%** 4 lates

Year 2 = **88.58%** 4 lates

Year 3 = **98.57%** 2 lates

Year 4 = **87.04%** 6 lates

Year 5 = **91.15%** 2 lates

Year 6 = **98.08%** 1 late

Well done Year 6!

Don't forget, each class that is 96% or above will receive a celebration party!

Diary Dates 25-26

NEW DATES WILL BE ADDED IN RED

WB Monday 1st June—Year 4 multiplication check

WB Monday 8th June—Phonics check week

Monday 13th July—EYFS/KS1 sports day (AM)

Tuesday 14th July—KS2 sports day (AM)

Wednesday 22nd July—Whole school mass

Monday 27th July—Development day—school closed

PHYSICAL EDUCATION

SUMMER 1 2026

MONDAY

YEAR SIX

TUESDAY

YEAR 3
SWIMMING

WEDNESDAY

EYFS

THURSDAY

YEAR ONE, YEAR
TWO & YEAR
FIVE

FRIDAY

EYFS, YEAR FOUR &
WOODLAND
ROOM

Medical Appointments & Leave of Absence Requests

If your child has a hospital/dental appointment, please ensure you have notified the school office of the time and date and handed in a copy of the medical letter or appointment card.

Leave of absence request forms for holidays/funerals etc. are available upon request at the school office.



We are a cashless school and only accept payments through Compass. Please contact the office if you need to set this up. Please use this service to pay for:

- School dinners
- After school clubs
- Trips and visits

Free parking!

Free parking permits are available from the school office for the local canoe lake car park.

We urge all parents that need to drive to and from school to use this service as parking around the school site is limited and our local residents still require access to their property at all times.

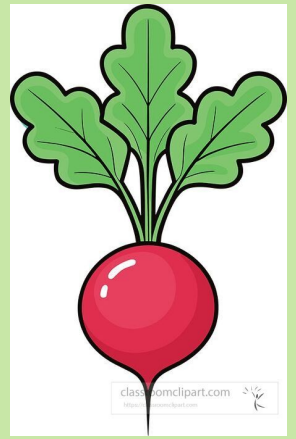
Our Weekly debate

? What would you do differently if you could start this year again?



We listen to our pupils and hear their voice! We will be working with the children to see if we can make this happen and have an attendance award shop, where they can swap their points for prizes!

News from our wellbeing team



Our well-being team have been busy setting up all of the planting and caring for all of your generous donations. We are so excited to be growing our own plants!

This week in wellbeing gardening, we picked and ate the radishes! It made us feel happy and proud that we had grown them.

Tips of the week:

Talking to plants help them grow.

Vibrations from sounds and carbon dioxide that you exhale stimulates growth.

Did you know.....

The rarest fruit in the world is a black diamond apple!



Thyme for a laugh

Knock knock

Who's there?

Lettuce

Lettuce who?

Lettuce in and you will find out!



School dinner menu

SPRING/SUMMER
2026 MENU

WEEK 1

W/C: 13/04/2026, 04/05/2026, 01/06/2026, 22/06/2026, 13/07/2026

		MONDAY	TUESDAY	WEDNESDAY	THURSDAY	FRIDAY
HOT DISHES	OPTION 1	Cheese and Tomato Pizza with Potato Wedges 🌱	Beef Bolognese with Wholewheat Pasta 🍷🍷	Roast Chicken with Roast Potatoes and Gravy 🍷	I.O.W Pork Sausages with Mashed Potato and Gravy	Fish Fingers with Chips
		OR	OR	OR	OR	OR
	OPTION 2	BBQ Vegetable Wrap with Wholegrain Rice 🌱🍷🍷	Vegetarian Bolognese with Wholewheat Pasta 🌱🍷🍷	Roast BBQ Quorn with Roast Potatoes and Gravy 🌱	Macaroni Cheese 🌱🍷	Quorn Dippers with Chips 🌱
	OR	OR	OR	OR	OR	
OPTION 3	Tomato Pasta Fresh, homemade Tomato Sauce with Wholewheat Pasta 🌱🍷	Tomato Pasta Fresh, homemade Tomato Sauce with Wholewheat Pasta 🌱🍷	Tomato Pasta Fresh, homemade Tomato Sauce with Wholewheat Pasta 🌱🍷	Tomato Pasta Fresh, homemade Tomato Sauce with Wholewheat Pasta 🌱🍷	Tomato Pasta Fresh, homemade Tomato Sauce with Wholewheat Pasta 🌱🍷	Tomato Pasta Fresh, homemade Tomato Sauce with Wholewheat Pasta 🌱🍷
HOT DISHES ARE SERVED WITH TWO VEGETABLES AND FRESHLY BAKED BREAD						
DELI	OPTION 4	Baguettes Choice of either Ham, Cheese or Tuna 🌱	Baguettes Choice of either Ham, Cheese or Tuna 🌱	Baguettes Choice of either Ham, Cheese or Tuna 🌱	Baguettes Choice of either Ham, Cheese or Tuna 🌱	Baguettes Choice of either Ham, Cheese or Tuna 🌱
	DELI DISHES ARE SERVED WITH MIXED SALAD					
DESSERT		Chocolate Brownie 🌱	Oat Cookie 🌱	Strawberry Shortcake Mousse	Vanilla Slice with Melon Wedges 🌱	Chocolate Ice Cream



BAKED POTATOES SERVED DAILY
With a choice of toppings 🍷🍷



AVAILABLE DAILY
Fresh fruit, salad, yoghurt and water

🌱 Vegetarian 🍷 Vegan 🐟 Oily Fish 🍷 Fruity! 🍷 Wholegrain 🍷 Nutritionist's Choice

Our menu is subject to change. Please be assured that all notified medical diets and allergy requirements will be safely catered for.

Chartwells
Schools

MAIL 12/2026

SPRING/SUMMER
2026 MENU

WEEK 2

W/C: 20/04/2026, 11/05/2026, 08/06/2026, 29/06/2026, 20/07/2026

		MONDAY	TUESDAY	WEDNESDAY	THURSDAY	FRIDAY
HOT DISHES	OPTION 1	Cheese and Tomato Pizza with Potato Wedges 🌱	Beef Burger with Potato Wedges	Roast Gammon with Roast Potatoes and Gravy	Chicken and Vegetable Korma with Wholegrain Rice 🍷🍷	Fish Fingers with Chips
		OR	OR	OR	OR	OR
	OPTION 2	Tex Mex Vegetable Fajita with Wholegrain Rice 🌱🍷🍷	Beany Vegetable Burger with Potato Wedges 🌱🍷	Bean and Cheese Pastry Turnover with Roast Potatoes and Gravy 🌱	Macaroni Cheese 🌱🍷	Quorn Dippers with Chips 🌱
	OR	OR	OR	OR	OR	
OPTION 3	Tomato Pasta Fresh, homemade Tomato Sauce with Wholewheat Pasta 🌱🍷	Tomato Pasta Fresh, homemade Tomato Sauce with Wholewheat Pasta 🌱🍷	Tomato Pasta Fresh, homemade Tomato Sauce with Wholewheat Pasta 🌱🍷	Tomato Pasta Fresh, homemade Tomato Sauce with Wholewheat Pasta 🌱🍷	Tomato Pasta Fresh, homemade Tomato Sauce with Wholewheat Pasta 🌱🍷	Tomato Pasta Fresh, homemade Tomato Sauce with Wholewheat Pasta 🌱🍷
HOT DISHES ARE SERVED WITH TWO VEGETABLES AND FRESHLY BAKED BREAD						
DELI	OPTION 4	Baguettes Choice of either Ham, Cheese or Tuna 🌱	Baguettes Choice of either Ham, Cheese or Tuna 🌱	Baguettes Choice of either Ham, Cheese or Tuna 🌱	Baguettes Choice of either Ham, Cheese or Tuna 🌱	Baguettes Choice of either Ham, Cheese or Tuna 🌱
	DELI DISHES ARE SERVED WITH MIXED SALAD					
DESSERT		Banana Oat Bite 🌱	Lemon Cookie 🌱	Caramel Mousse	Chocolate Brownie 🌱	Strawberry Ice Cream



BAKED POTATOES SERVED DAILY
With a choice of toppings 🍷🍷



AVAILABLE DAILY
Fresh fruit, salad, yoghurt and water

🌱 Vegetarian 🍷 Vegan 🐟 Oily Fish 🍷 Fruity! 🍷 Wholegrain 🍷 Nutritionist's Choice

Our menu is subject to change. Please be assured that all notified medical diets and allergy requirements will be safely catered for.

Chartwells
Schools

School dinner menu

SPRING/SUMMER
2026 MENU

WEEK 3

W/C: 27/04/2026, 18/05/2026, 15/06/2026, 06/07/2026, 27/07/2026

	MONDAY	TUESDAY	WEDNESDAY	THURSDAY	FRIDAY
HOT DISHES	OPTION 1 Cheese and Tomato Pizza with Pasta Salad 🍕 🥗	All Day Breakfast with Potato Wedges	Roast Chicken with Roast Potatoes and Gravy 🍗	Lasagne with Garlic Bread 🍝 🍞	Fish Fingers with Chips
	OPTION 2 Veggie Meat Feast Pizza with Pasta Salad 🍕 🥗	Cheesy Bean Burrito with Wholegrain Rice 🌮 🍚	Vegetarian Cottage Pie with Gravy 🥧 🍲	Vegetable Lasagne with Garlic Bread 🍝 🍞	Quorn Dippers with Chips 🍗 🍟
	OPTION 3 Tomato Pasta Fresh, homemade Tomato Sauce with Wholewheat Pasta 🍝 🍚	Tomato Pasta Fresh, homemade Tomato Sauce with Wholewheat Pasta 🍝 🍚	Tomato Pasta Fresh, homemade Tomato Sauce with Wholewheat Pasta 🍝 🍚	Tomato Pasta Fresh, homemade Tomato Sauce with Wholewheat Pasta 🍝 🍚	Tomato Pasta Fresh, homemade Tomato Sauce with Wholewheat Pasta 🍝 🍚
HOT DISHES ARE SERVED WITH TWO VEGETABLES AND FRESHLY BAKED BREAD					
DELI	OPTION 4 Baguettes Choice of either Ham, Cheese or Tuna 🥖	Baguettes Choice of either Ham, Cheese or Tuna 🥖	Baguettes Choice of either Ham, Cheese or Tuna 🥖	Baguettes Choice of either Ham, Cheese or Tuna 🥖	Baguettes Choice of either Ham, Cheese or Tuna 🥖
	DELI DISHES ARE SERVED WITH MIXED SALAD				
DESSERT	Custard Shortbread with Melon Wedges 🍰 🍈	Strawberry Jelly	Chocolate Mousse	Vanilla Ice Cream	Banana Flapjack 🍌 🍞



BAKED POTATOES SERVED DAILY
With a choice of toppings 🍌 🍟



AVAILABLE DAILY
Fresh fruit, salad, yoghurt and water

🌿 Vegetarian 🌱 Vegan 🐟 Oily Fish 🍌 Fruity! 🍚 Wholegrain 🍷 Nutritionist's Choice

Our menu is subject to change. Please be assured that all notified medical diets and allergy requirements will be safely catered for.



Chartwells
Schools

MAIL 15/03/20

Are you entitled to free school meals?

If you receive any of the following, you can claim free school meals and the school can access additional funding too!

- Income support
- Income based jobseekers allowance
- Income-related employment and support allowance
- Guaranteed pension credit
- Support under part 5 of the immigration and asylum Act 1999
- Universal credit (with an annual net income of no more than £7,400)
- Child tax credit, provided the parent is not entitled to working tax credit and have an annual income, as assessed by HMRC, which does not exceed £16,190.
- Where a parent is entitled to working tax credit run-on (the payment someone receives for a further four weeks after they stop qualifying for working tax credit)

Registering for free school meals could raise an extra £1320 to fund valuable support like extra resources, additional teaching staff or after school activities. This is why it is so important to sign up!

We have forms to complete to make this happen, so please come and fill one in!

Uniform Expectations

St Mary's Catholic Primary School Uniform

For all pupils:

Navy polo shirt with logo

Navy round neck sweatshirt

Navy cardigan

(Jumpers and Cardigans may be worn without a logo if wished. However, if you wish to you can purchase them from Kids and Co. with a logo or take the item bought elsewhere to Kids and Co. who for a small fee will add the school logo.)

Warm navy-blue tracksuit bottoms (not shiny or branded ones)

These items may be worn in warm weather but you always need to bring in the tracksuit bottoms so we can access the woods easily

Grey knee length skirt

Grey knee length pinafore

Grey shorts

Blue and white checked dress

White or grey socks / tights

Black shoes – the shoes need to be robust so that when the children are outside at lunch or break time as well as when outside learning their feet are supported. Ballet style shoes or ill-fitting shoes do not provide this support and should not be worn.

The shoes must be plain black with no decoration. They may be trainer styled shoes.

PE Kit

School PE Logo top

Navy shorts/skort

Plain black trainers (Please provide non-laced ones until your child is able to tie their own laces)

Navy tracksuit bottoms

Navy sweatshirt/hoody

Hair

The children should wear their hair simply. This means no extreme haircuts including sculpting or shaved designs. No colour in hair. Hair bands and clips should be plain and small.

One small pair of earrings may be worn – if the child is not able to take them out they will be covered in tape during PE

Temporary tattoos, make up, other jewellery, nail varnish and festival bands should not be worn at school.

All uniform may be purchased from Kids and Co in Ryde - <https://www.kidsandcodirect.co.uk/>

Finally, please name all items. If you use pen to name the items, you will know that you need to write the name again several times throughout the year as it does wash out.



After school clubs

St Mary's Catholic Primary School After School Clubs – Monday 1st June – Friday 24th July All clubs finish at 4pm unless otherwise stated Your child will NOT be offered a place until payment in full has been received, together with consent. All clubs are offered on a first come first served basis.	
Monday	<p>Skateboarding (KS2) Run by John Cattle's Skate Club C.I.C Minimum 8. Starting 1st June (8 sessions). £4 per session. To book please go to your Compass Portal</p> <p>Homework Club (Yrs 2 - 6) Run by school staff Free to attend To book please go to your compass portal</p>
Tuesday	
Wednesday	<p>Art Club (Years 2-6) Run by Portraits with Fleur Starting 3rd June (8 sessions) £5.50 per session (£44 in total). To book please go to your Compass Portal</p> <p>Carnival Club (All Years) Starting 3rd June (8 sessions) £30 in total To book please go to your compass portal</p>
Thursday	<p>Football Club (Years 1-6) Run by LJR Coaching Minimum 5 children. Starting 4th June (8 sessions) £32 To book: https://ljrcoaching.classforkids.io/info/246</p>
Friday	<p>Llama Drama (Years R-3) 3:00pm-4:00pm Starting 5th June (6 sessions). £30. To book: https://llama-drama-iow.classforkids.io/info/206</p> <p>-----</p> <p>Llama Drama (Years 4-6) 4:00pm-5:00pm Starting 5th June (6 sessions). £30. To book: https://llama-drama-iow.classforkids.io/info/205</p>

School Development Days

Monday 1st September 2025

Tuesday 2nd September 2025

Monday 29th September 2025

Monday 5th January 2026

Monday 27th July 2026

Community News

SMALL MUSEUMS · BIG ON HISTORY!

NEWPORT ROMAN VILLA **MUSEUM OF ISLAND HISTORY**

ROMAN HALF-TERM FAMILY FUN
NO NEED TO BOOK!

WEDNESDAY 27 MAY **TUESDAY 26 AND THURSDAY 28 MAY**

EXPLORE THE ROMAN GARDEN **PLAY ROMAN GAMES... AND DESIGN A ROMAN GAME TO KEEP!**

CREATE A LAUREL CROWN

◆ 10am to 2pm ◆ £1 per person ◆ Wednesday 28 May

◆ 10am to 1pm ◆ £1 per person ◆ Tuesday 26 May and Thursday 28 May

ALL-WEATHER ATTRACTIONS

Cypress Road, Newport, IW, PO30 1HA **01983 823433** **01983 823433**
iow.gov.uk/museums
museums@iow.gov.uk

Guildhall, High Street, Newport, IW, PO30 1TY
Isle of Wight Council

Events organised by the Isle of Wight Heritage Service

Community News



DINOSAUR ISLE MAY HALF TERM

What's On...

Monday 25th

@ 11 am – Talk / Q&A / Fossil Handling: 'Meet Vectipelta and the awesome ornithischian dinosaurs!'
@ 2-3 pm – Fossil Handling

Tuesday 26th

@ 11 am – Talk / Q&A / Fossil Handling: 'Meet Eotyrannus and the terrifying tyrannosaurs and spinosaurs!'
@ 1 pm – Yaverland Public Fossil Walk
@ 2-3 pm – Fossil Handling

Wednesday 27th

@ 11 am – Hands-On Activities / Fossil Handling (Education Room)
@ 2 pm – Shanklin Public Fossil Walk
@ 2-3 pm – Fossil Handling

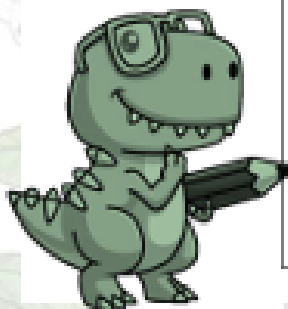
Thursday 28th

@ 11 am – Talk / Q&A / Fossil Handling: 'Meet Eucamerotus and the gigantic sauropod dinosaurs!'
@ 2:30pm – Yaverland Public Fossil Walk
@ 2-3pm – Fossil Handling

Friday 29th

@ 2pm – Talk / Q&A / Fossil Handling: 'Meet Caulkicephalus and the amazing reptiles that lived alongside the dinosaurs!'
@ 3pm – Shanklin Public Fossil Walk

Our fossil walks are super popular, so you need to book your spot! – Ring the team on 01983 404344



Community News

Half Term Fun

Isle of Wight Donkey Sanctuary

23 to 31 May

FREE Entry & parking

Free guided tours

Daily 11.30am and 1.00pm

Join our behind-the-scenes tour. Limited availability - secure your spot online.

Free Tractor Trail

Explore our sanctuary while keeping an eye out for hidden tractors!

Book a Donkey Experience

Save **£20** for two this May!
The best way to spend quality time with our animals.

Even more to enjoy

Springtime walks, treats in the café, a beautiful gift shop, animal adoptions and more...



Frankie



Find out more:
iowdonkeysanctuary.org

Community News

ISLE OF WIGHT LIBRARIES MAY HALF TERM ACTIVITIES

All of our May half term activities are free. More information can be found at www.iow.gov.uk/thelibrary

**27
MAY**

Wednesday, 10.30am – 11.30am

**WANDER – STORY TIME AND CRAFT WITH CHILDREN'S AUTHOR
LIZZIE BOYNTON – [RYDE LIBRARY](#)**

Children aged 3+ No need to book

**27
MAY**

Wednesday, 2.00pm – 4.00pm

QUIRKY BIRD CRAFT – [FRESHWATER LIBRARY](#)

Children aged 3+
No need to book

**28
MAY**

Thursday, 2.30pm – 4.30pm

MAKE YOUR OWN TIGER MASK – [LORD LOUIS LIBRARY](#)

Suitable for children aged 4+
Booking essential – call the library on 823823

**29
MAY**

Friday, 2.30pm – 4.00pm

TEEN ROCK PAINTING – [LORD LOUIS LIBRARY](#)

Suitable for young people aged 12 to 16 years
Drop-in, no need to book.

**29
MAY**

Friday, 10.00am – 12.00pm

MONSTER MAKING WORKSHOP – [COWES LIBRARY](#)

No need to book
Please note there are currently no toilet facilities at Cowes Library

**30
MAY**

Saturday, 2.30pm – 4.30pm

MAKE GIANT FLOWERS – [LORD LOUIS LIBRARY](#)

Suitable for children aged 4+
Drop-in

**30
MAY**

Saturday, 10.30am – 12.00pm

BEE STORY TIME AND CRAFT – [RYDE LIBRARY](#)

Suitable for children aged 3+
Drop-in

**30
MAY**

Saturday, 10.30am – 11.30am

MAKE A BEAD KEYRING – [SANDOWN LIBRARY](#)

Children aged 4+
Booking essential – call the library on 402748

**30
MAY**

Saturday, 10.30am – 11.30am

ROCKING SHEEP CRAFT – [VENTNOR LIBRARY](#)

Children aged 4+
Drop-in

Community News



Aged 7 - 11?
Bored after school?

drama...
improv...

LLAMA DRAMA.

Llama Drama offers small, welcoming drama groups across the Island and we would love YOU to join us!

We are looking for young comedians, role players, budding actors & actresses and downright fun-seekers to try a session with us for free!

games...
fun!

Ryde
(St Mary's R.C. Primary School)
Fridays
4-5pm

Get in Touch!
ALLY MAC
☎ 01983 655126
📱 @Llama Drama IOW
🌐 lamadrama.iow.co.uk
✉ info@lamadrama.iow.co.uk

Book Now:
<https://llama-drama-iow.classforkids.io>



The School Nurse can offer face to face appointments twice a term. We can support with the following health concerns:

- Physical Health concerns related to school absences: not chronic or persistent absenteeism.
- Support for healthy lifestyles:
 - Diet and exercise.
 - Growth concerns.
 - Support around sleep.
 - Continence i.e. night/daytime wetting, soiling, constipation.

The next face to face appointments available at St Mary's Primary School are on **Friday 12th June at 08:45, 09:15, and 09:45.**

Please speak to a member of school staff to book.

For further information and dates available to see the School Nurse please speak to a member of the school staff or call the School Nurse service on 0300 123 5224.

Community News

Kindly sponsored by
 thepriceiswight

Gather your herd for our 5K family fun run!

RUN WILD!

Sunday,
5th July

Join the stampede!



 **wildheart**
isle of wight
sanctuary

Registered charity number 1171144
www.wildheartanimalsanctuary.org
Yaverland Road, Sandown, PO36 8QB



Community News

Recruiting new players
for the 26/27 season

The **only** all **GIRLS**

club on the island and the
only one competing in the
Hampshire league



We are looking for
footballers in year 4-6
from across the island



Run by FA qualified coaches
In a **SAFE, FUN** environment

Contact: info@wighteagles.co.uk for more details

Come and try us for **FREE**



Training at The Bay C of E School every Thursday
5.30-7pm

Community News



WE WANT YOU!



Looking for a friendly & fun club to play cricket?
Just starting out and want to give it a go?

Everyone welcome

ECB trained coaches,
equipment & great opportunities.



For more information please
contact us at
 07368937817
www.facebook.com/arretoncc

- All-stars age 5-8
- Dynamos age 8-11
- U11 teams
- U13 teams
- U15 teams
- Girl's teams
- Men & Women